



# DEFINING THE POTENTIAL

DEVELOPING  
THE OPPORTUNITIES

DELIVERING  
THE OUTCOMES

ASX:KIN - [www.kinmining.com.au](http://www.kinmining.com.au)

# Disclaimer

This presentation is not a prospectus nor an offer for securities in any jurisdiction nor a securities recommendation. The information in this presentation is an overview and does not contain all information necessary for investment decisions. In making investment decisions in connection with any acquisition of securities, investors should rely on their own examination of Kin Mining NL and consult their own legal, business and/or financial advisers.

The information contained in this presentation has been prepared in good faith by Kin Mining NL, however no representation or warranty expressed or implied is made as to the accuracy, correctness, completeness or adequacy of any statements, estimates, opinions or other information contained in this presentation. To the maximum extent permitted by law, Kin Mining NL, its directors, officers, employees and agents disclaim liability for any loss or damage which may be suffered by any person through the use or reliance on anything contained in or omitted from this presentation.

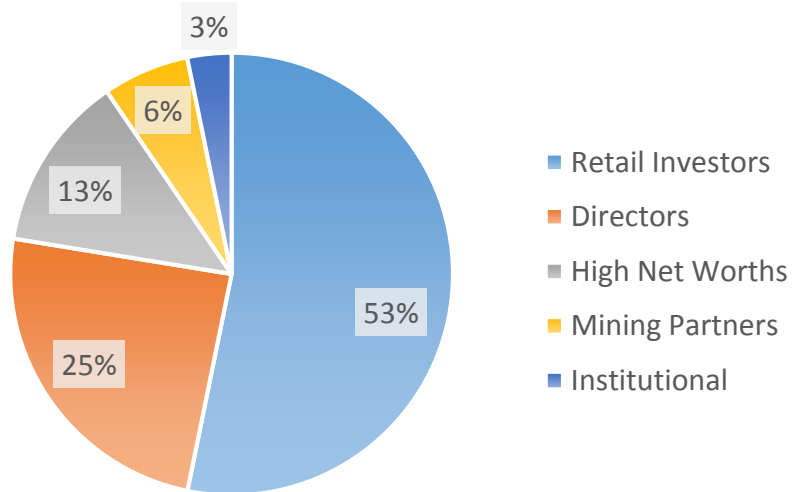
Certain information in this presentation refers to the intentions of Kin Mining NL, but these are not intended to be forecasts, forward looking statements or statements about future matters for the purposes of the Corporations Act or any other applicable law. The occurrence of events in the future are subject to risks, uncertainties and other factors that may cause Kin Mining NL's actual results, performance or achievements to differ from those referred to in this presentation. Accordingly, Kin Mining NL, its directors, officers, employees and agents do not give any assurance or guarantee that the occurrence of the events referred to in the presentation will actually occur as contemplated

## **Competent Persons Statement**

*The information contained in this report relates to information compiled or reviewed by Mr. Paul Maher who is a member of the (AusIMM) and Mr. Simon Buswell-Smith who is a Member of the Australian Institute of Geoscientists (MAIG), both are employees of the company and fairly represent this information. Mr. Maher and Mr. Buswell-Smith have sufficient experience of relevance to the styles of mineralisation and the types of deposit under consideration, and to the activities undertaken to qualify as Competent Persons as defined in the 2012 edition of the "JORC Australian code for reporting of Exploration Results, Mineral Resources and Ore Reserves". Both consent to the inclusion in this report of the matters based on information in the form and context in which it appears.*

# Corporate Summary

## Shareholders



## Directors and Management

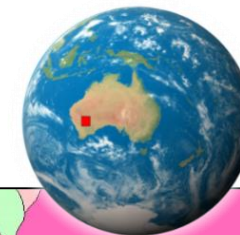
Terry Grammar	Non-Executive Chairman
Trevor Dixon	Executive Director
Fritz Fitton	Technical Director
Joe Graziano	Director/Company Secretary

## Corporate Snapshot

ASX Code	KIN
Issued Shares	77,512,890
Unlisted Options	14,925,000
Share Price *	\$ 0.088
Market Cap *	~ \$7M
Cash	\$531,000 (31/12/2015)

\* As at 1<sup>st</sup> February 2016

# Kin Mining NL – Who are We?

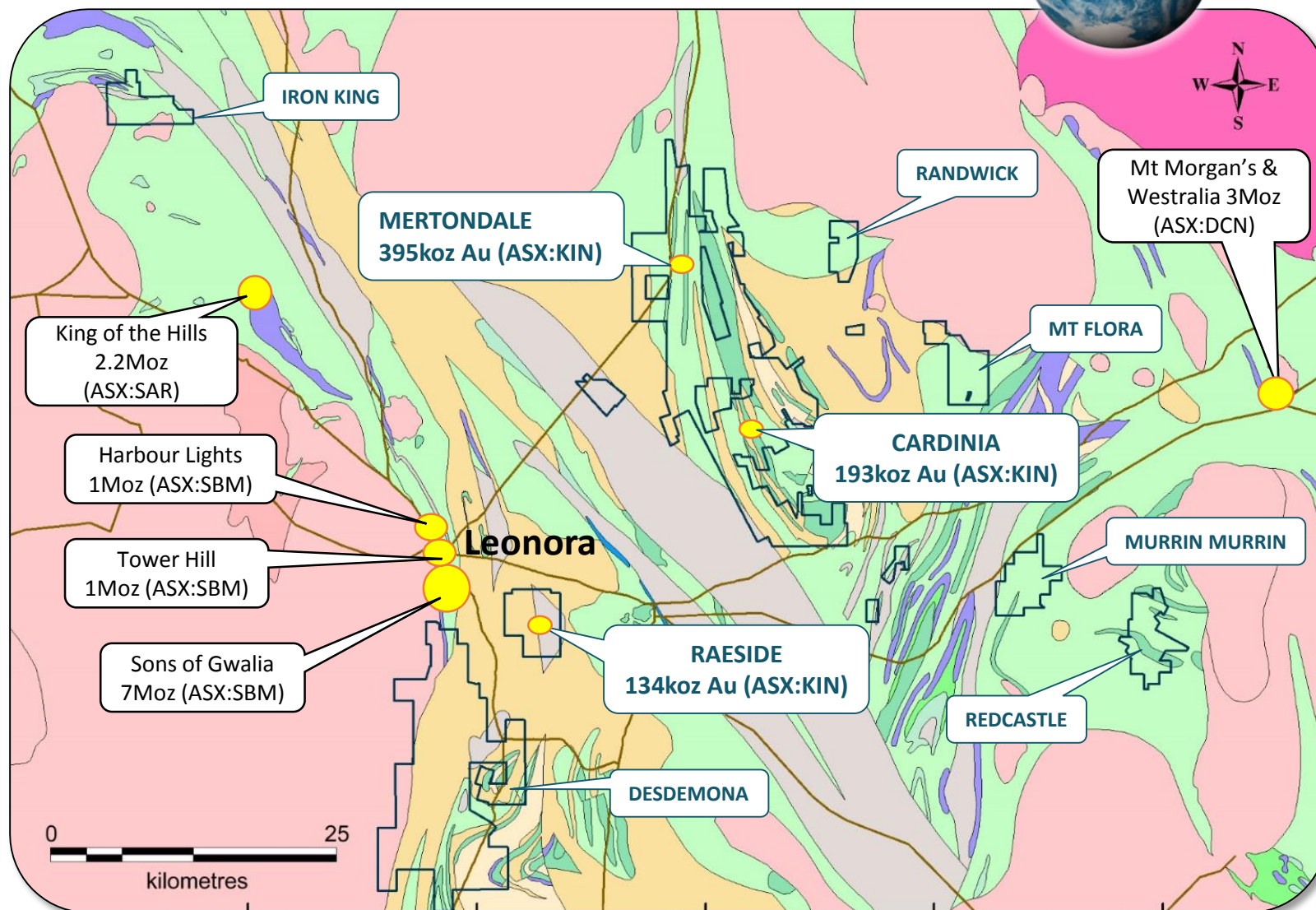


## Our Assets

- Total Land Holding of 545sq km
- JORC Resources of 722,300 oz Au
- Untapped Underground Potential
- Infrastructure in place at Leonora
- Holding in a well known Gold Region

## Our Strategy

- **Define** Potential
- **Develop** Opportunities
- **Deliver** Outcomes





# Transition From Explorer to Producer 722,300oz



- Over 70% of the **722,300 oz** total Resource classified as Indicated (JORC 2012)
- Plus 282,000oz of Resource contained outside existing pit shell designs
- **Pre-Feasibility Study Commenced**

Leonora Gold Project Mineral Resources										
Project Area	Lower cut-off grade	Indicated Resources			Inferred Resources			Total Resources		
	g/t Au	Mt	g/t Au	koz	Mt	g/t Au	koz	Mt	g/t Au	koz
<b>Mertondale*</b>										
Mertondale 3_4	0.7	0.87	2.3	65	0.66	2.1	45	1.53	2.2	110
Merton's Reward	0.7	1.01	2.7	87	0.07	1.7	4	1.08	2.6	91
Tonto	0.7	0.97	1.9	60				0.97	1.9	60
Eclipse (Tonto North)	0.7	0.62	1.8	35	0.25	1.7	14	0.87	1.8	49
Mertondale 5	0.7	0.32	3.2	33	0.16	2.7	13	0.48	3.0	46
Quicksilver (Tonto South)	0.7	0.55	1.8	31	0.11	2.1	8	0.66	1.8	39
<b>Subtotal Mertondale</b>		<b>4.34</b>	<b>2.2</b>	<b>311</b>	<b>1.25</b>	<b>2.1</b>	<b>84</b>	<b>5.59</b>	<b>2.2</b>	<b>395</b>
<b>Cardinia**</b>										
Bruno-Lewis Exploration	0.7	1.04	1.1	37	1.52	1.3	63	2.56	1.2	100
Helen's North	0.7	0.63	1.2	24	0.13	1.1	5	0.76	1.2	29
Kyte	0.7				0.31	1.6	16	0.31	1.6	16
Rangoon	0.7	0.09	1.8	5	0.23	1.3	9	0.31	1.4	14
Lewis Grade Control	0.7	0.29	1.4	13				0.29	1.4	13
Bruno Grade Control	0.7	0.11	1.4	5	0.03	1.1	1	0.15	1.3	6
Helen's South	0.7	0.19	1.8	11	0.01	1.3	0	0.20	1.7	11
Lewis South	0.7				0.10	1.3	4	0.10	1.3	4
<b>Subtotal Cardinia</b>		<b>2.35</b>	<b>1.3</b>	<b>95</b>	<b>2.44</b>	<b>1.3</b>	<b>98</b>	<b>4.79</b>	<b>1.3</b>	<b>193</b>
<b>Raeside</b>										
Michelangelo-Leonardo	0.7	1.28	2.7	111				1.28	2.7	111
Forgotten Four	0.7	0.07	3.0	7	0.10	2.1	7	0.17	2.5	14
Krang	0.7	0.11	2.6	9				0.11	2.6	9
<b>Subtotal Raeside</b>		<b>1.47</b>	<b>2.7</b>	<b>127</b>	<b>0.10</b>	<b>2.1</b>	<b>7</b>	<b>1.57</b>	<b>2.6</b>	<b>134</b>
<b>TOTAL</b>		<b>8.16</b>	<b>2.0</b>	<b>533</b>	<b>3.665</b>	<b>1.6</b>	<b>189</b>	<b>11.825</b>	<b>1.9</b>	<b>722</b>

\* Resource estimate by McDonald Speijers, 2009 with Merton's Reward depleted by McDonald Speijers in 2010.

\*\* Resource estimate by Runge Limited, 2009 with Bruno Grade Control depleted by Runge in 2010.

Notes: Assay top cuts for Mertondale and Raeside are variable but generally between 10-20g/t Au and are 15g/t Au at Cardinia. No allowance has been made for dilution or ore loss. All resources are constrained by open pit shells optimised at A\$2,000/oz.

# Kin Mining NL Development

Plan to become a gold producing company within the next three years

- Acquisition of the Leonora Gold Project provided the Company with a head start against peers with **722,300 oz** of JORC 2012 Resources



- Previous studies demonstrated a base case development scenario of an open cut mine delivering 1Mtpa at 1.8g/t average gold grade to a standalone CIL plant over a 6 year mine life.

# Kin Mining NL Development

## Leonora Gold Project-Current Schedule

Current Schedule	2016 (1 <sup>st</sup> Half)	2016 (2 <sup>nd</sup> Half)	2017 (1 <sup>st</sup> Half)	2017 (2 <sup>nd</sup> Half)	2018 (1 <sup>st</sup> Half)	2018 (2 <sup>nd</sup> Half)	2019 (1 <sup>st</sup> Half)	2019 (2 <sup>nd</sup> Half)
Scoping Study	<b>Nearing Completion</b> Previous studies demonstrated a base case development scenario of an open cut mine delivering 1Mtpa at 1.8g/t average gold grade to a standalone CIL plant over a 6 year mine life							
Lewis Trial Mine Operation	Approvals granted. Mining commences	<b>Toll Mill Gold Pour</b>	Begin leaching					
Prefeasibility Study	<b>Commenced</b> →		Positive PFS secure Move to FS					
Feasibility Study			→		Secure funding for plant build			
Approvals					→			
Construction						→		
Operations							Commence Mining →	<b>First Gold Pour</b> 7



# Active Project Portfolio Advancing to Production

## Production

PSF commenced, Production 2019  
underground and open cut scenarios

## Resources JORC 2012

Open along strike and at depth  
Leonora Gold Project 11.825Mt @ 1.9g/t Au

## Advanced Projects

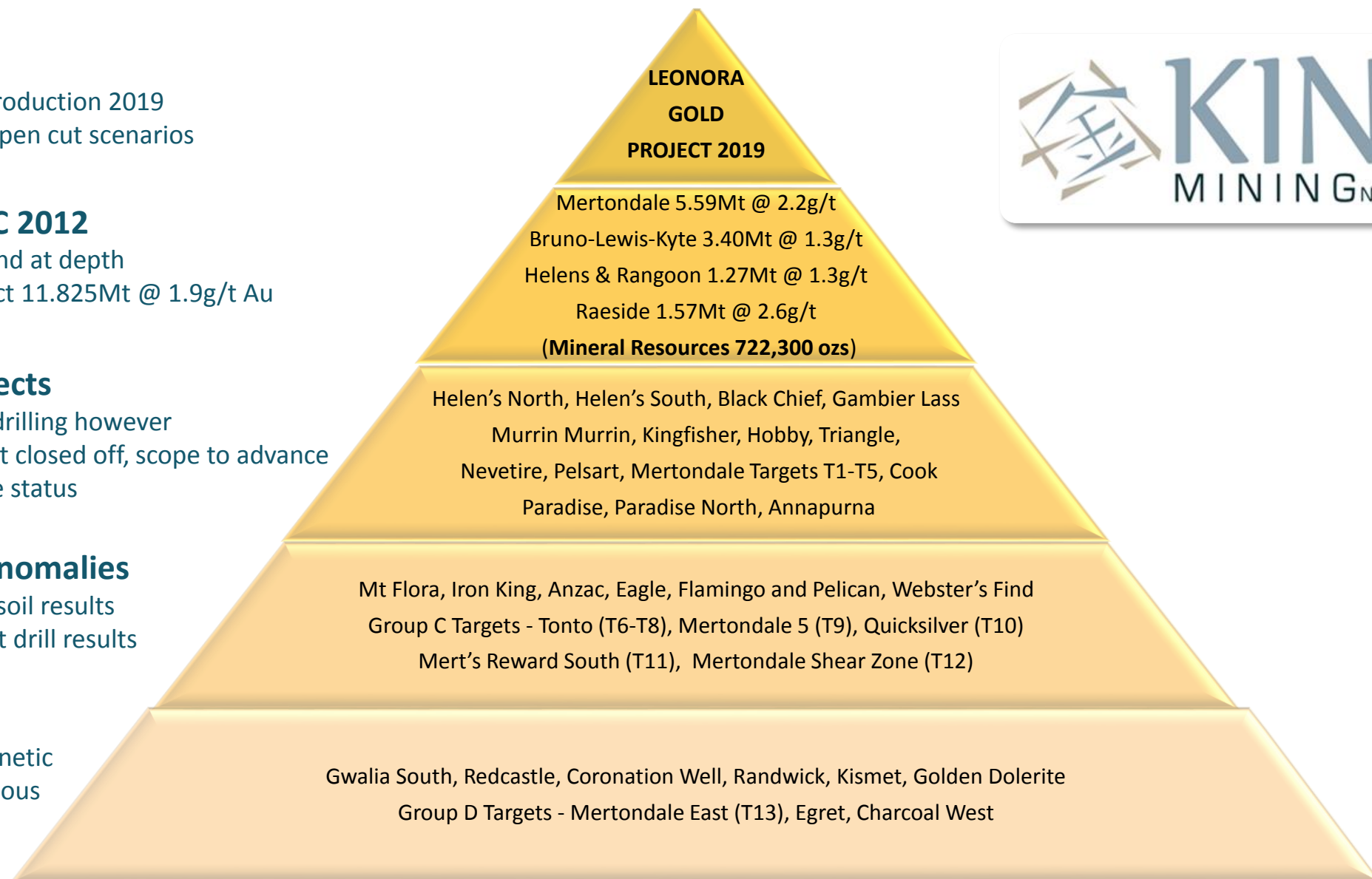
Targets with some drilling however  
mineralisation is not closed off, scope to advance  
projects to resource status

## Geochemical Anomalies

Anomalous gold-in-soil results  
and some significant drill results

## Targets

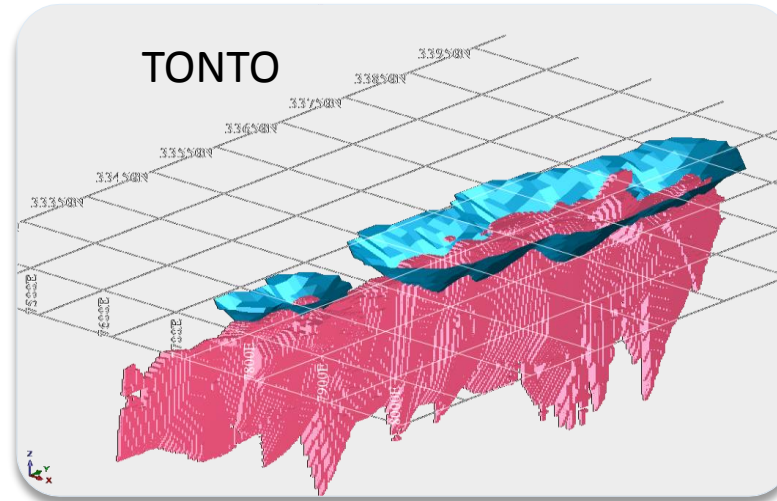
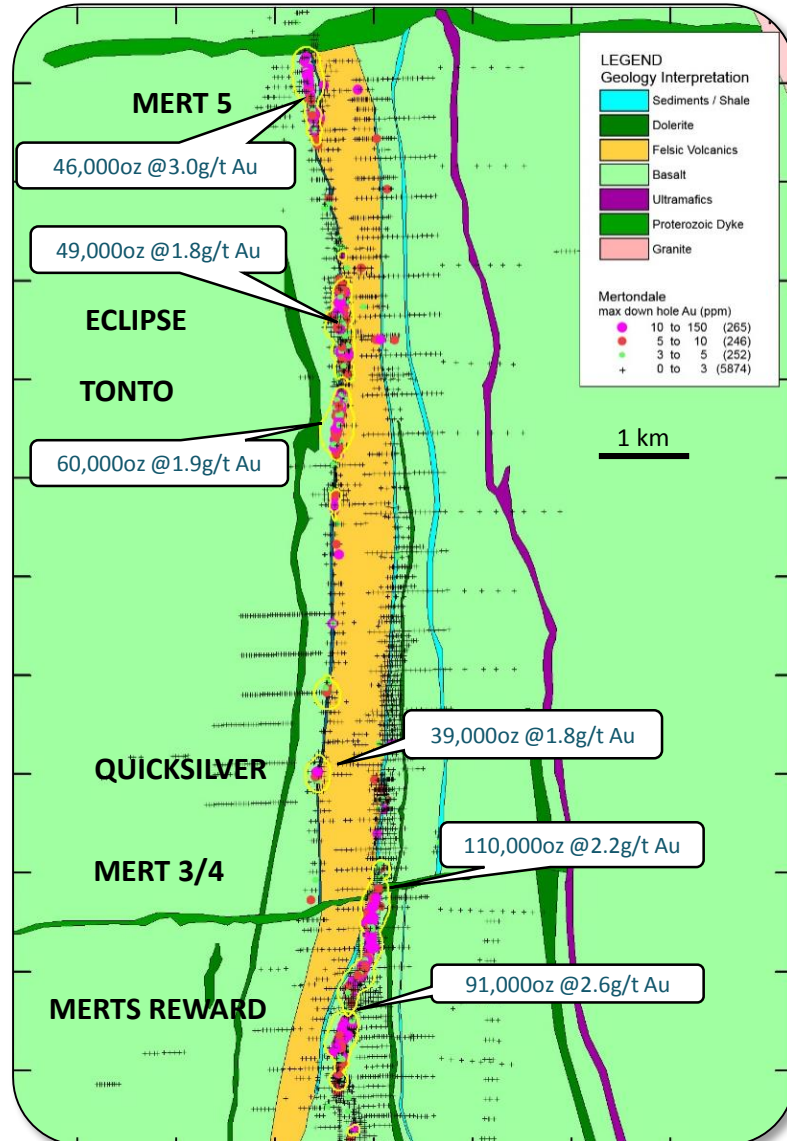
Structural and Magnetic  
Anomalies, Anomalous  
Rock chip sampling





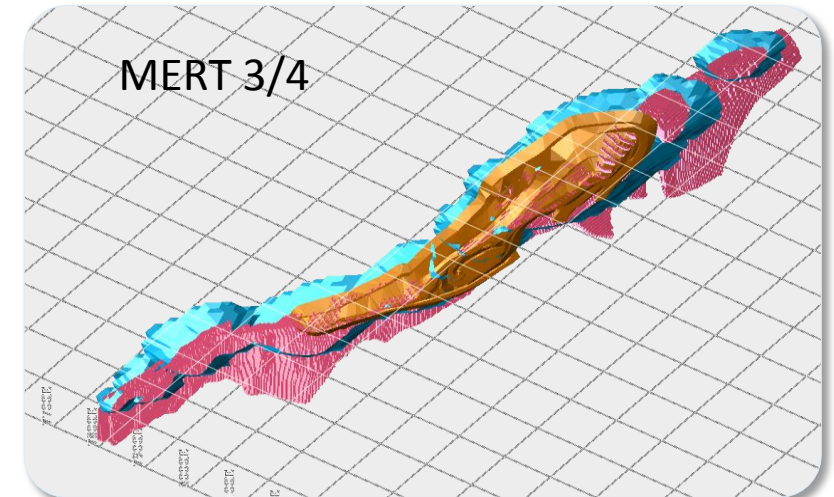
# Mertondale Project

395,000oz of Gold Along the Mertondale Shear Zone... and Growing

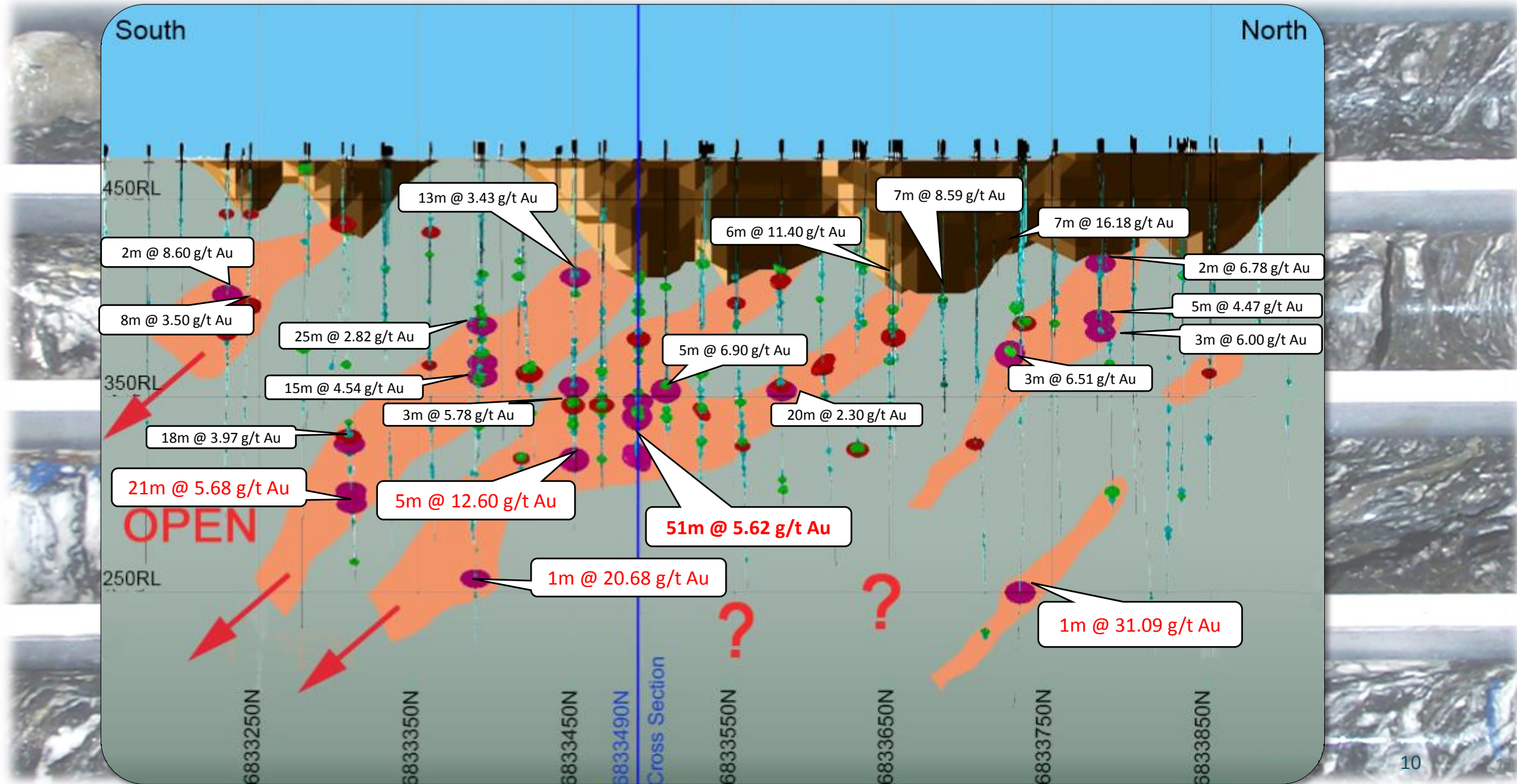


- Multiple open cut Resources creates a flexible mine plan

- Core Asset for the Pre-feasibility Study
- Potential to grow Resources along Shear Zone



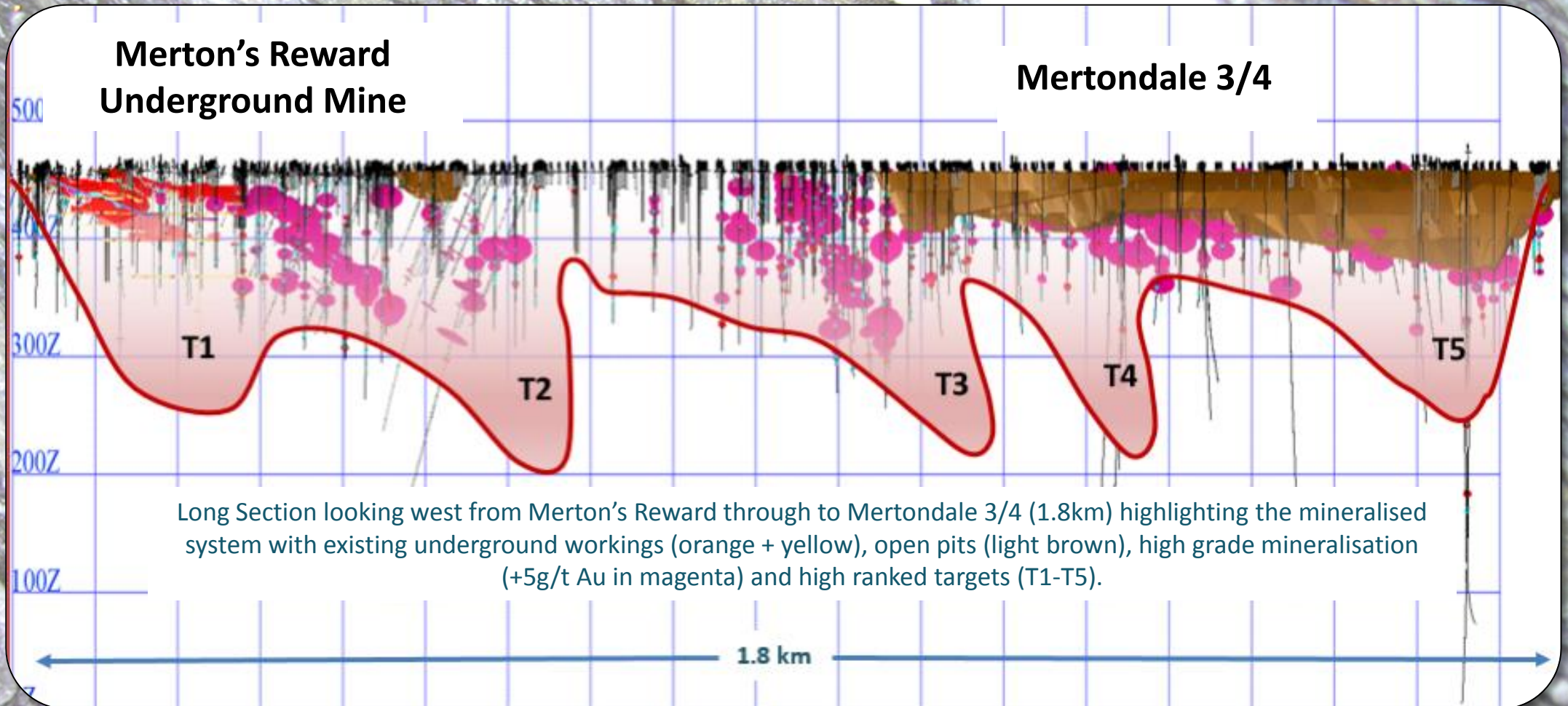
# Underground Potential Defined at Tonto





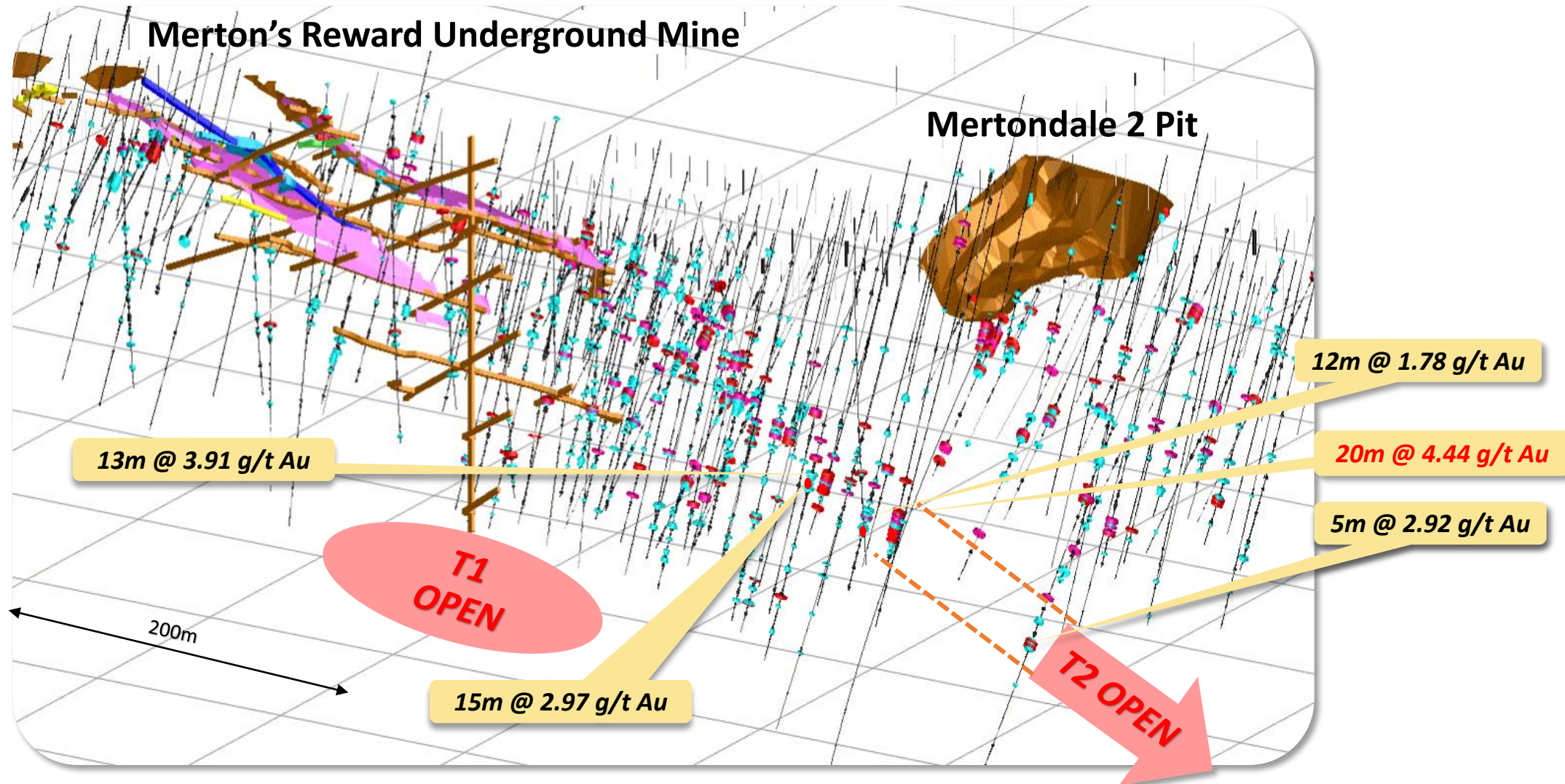
# High Ranked Targets

Defined Along the Mertondale Shear Zone





# Merton's Reward Underground Targets



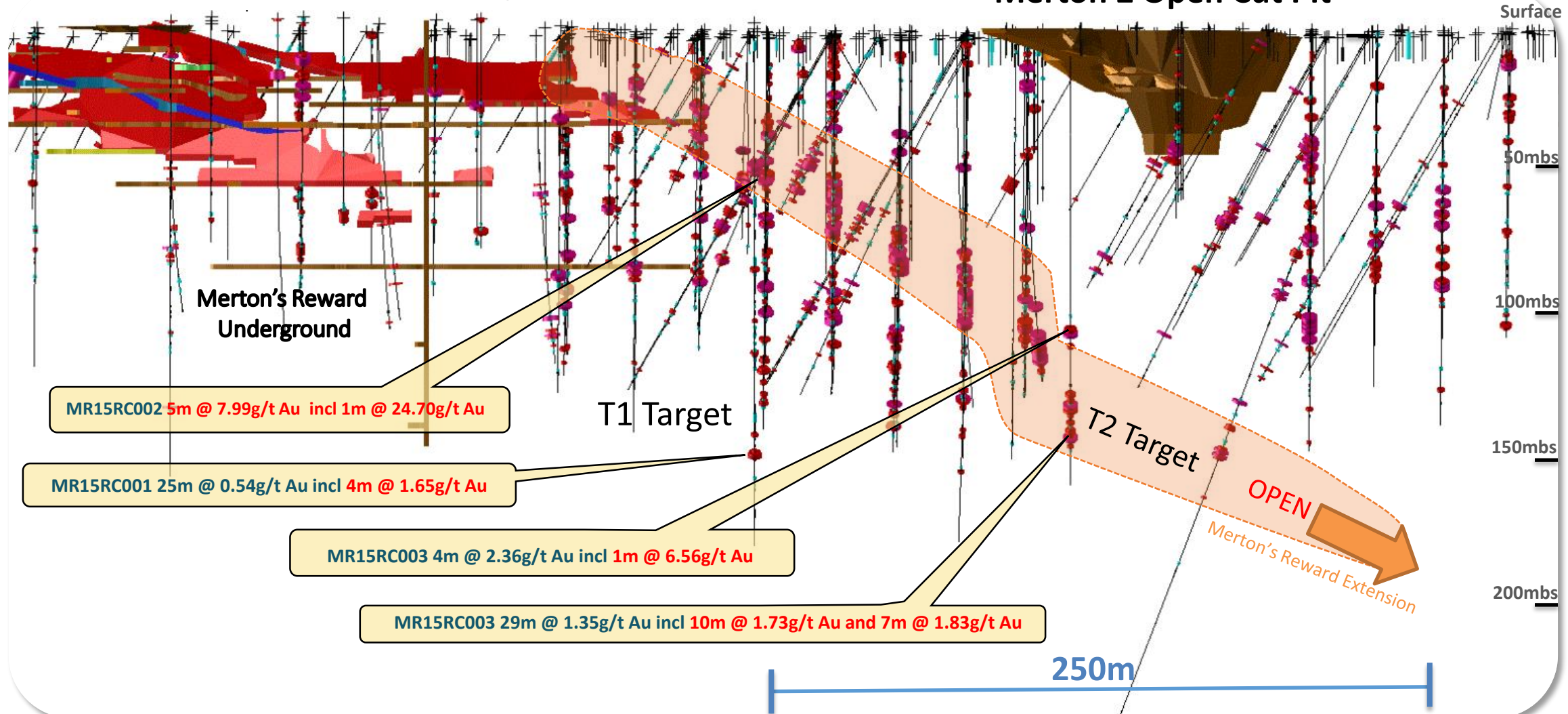
Oblique view of Merton's Reward (looking up along the stope intershear lodes in pink) highlighting the two targets areas (T1+T2) with existing downhole assay data (0.0-1.0 g/t Au=black, 1.0-3.0 g/t Au=cyan, 3.0-5.0 g/t Au=red and >5.0 g/t Au=magenta).



# Merton's Reward Maiden Drilling Delivered

## Merton's Reward Mined Stopes

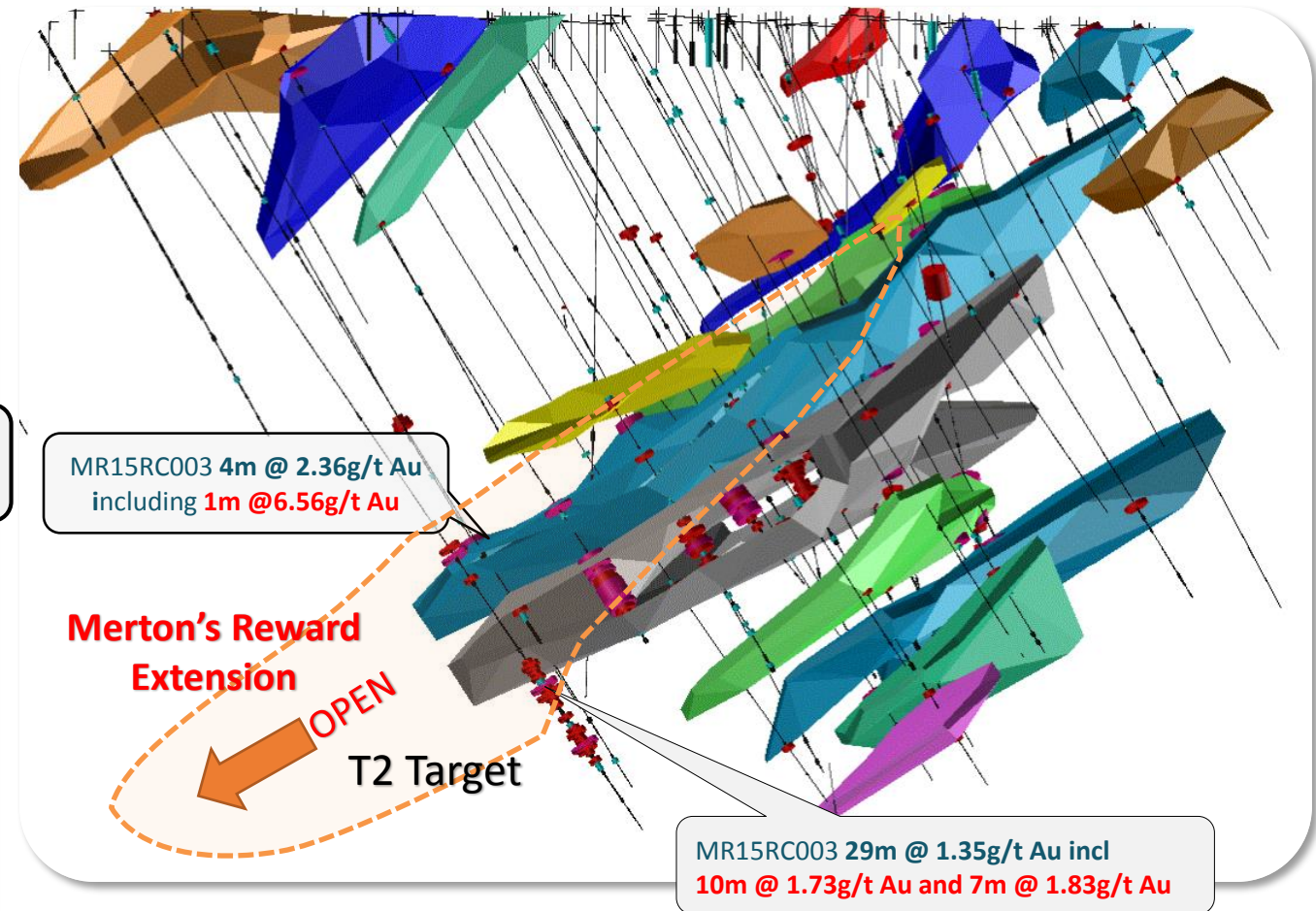
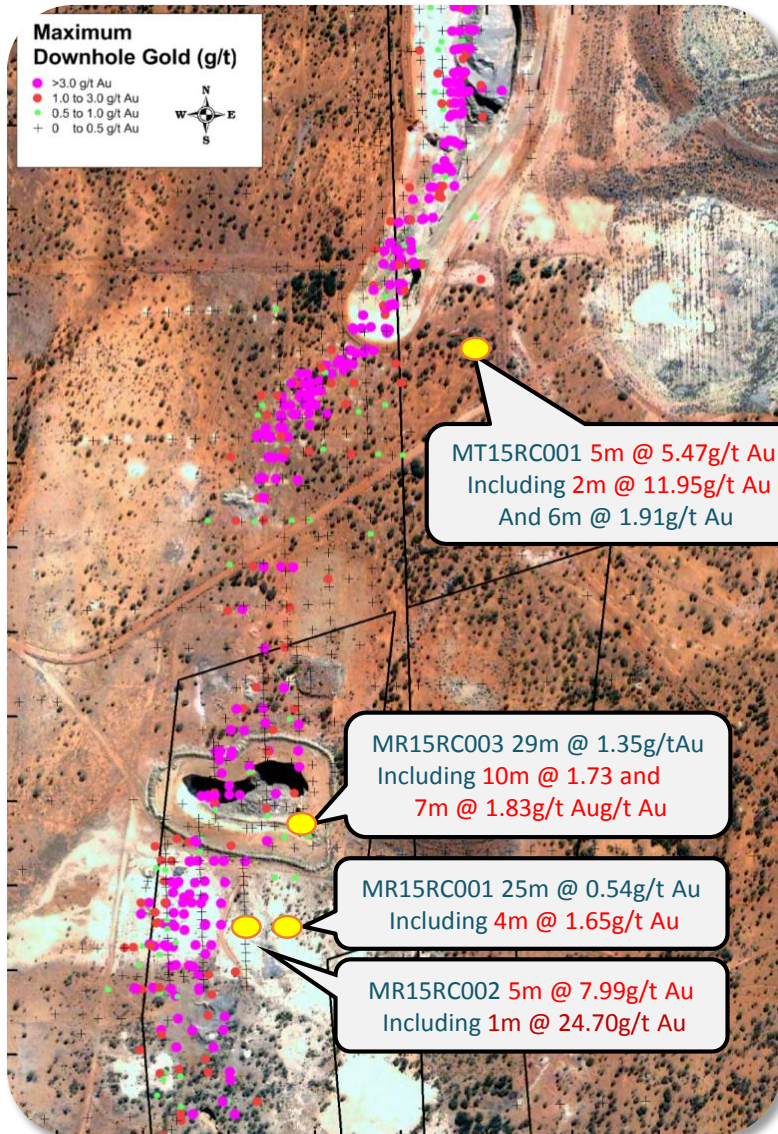
## Merton 2 Open Cut Pit



Long Section looking west, highlighting Merton's Reward Underground workings with recently announced drill intercepts (blue and red text). Interpreted extension of the Merton's Reward north plunging ore shoot (T2 target, dashed orange). With all resource drilling (0-0.5g/t Au= Black, 0.5-1g/t Au= Cyan, 1-3g/t Au= Red and >3g/t Au = Magenta)



# Merton's Reward Maiden Drilling Delivered



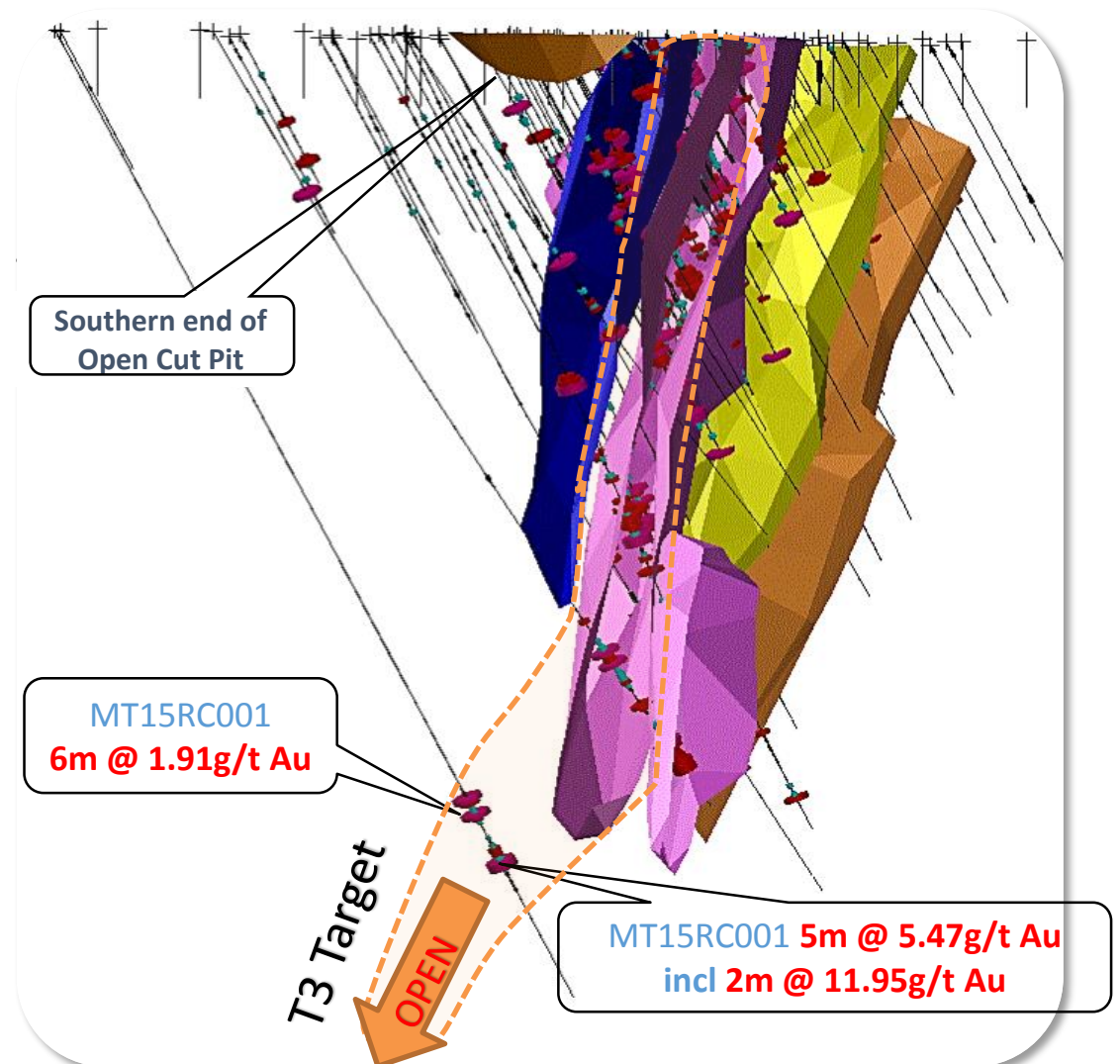
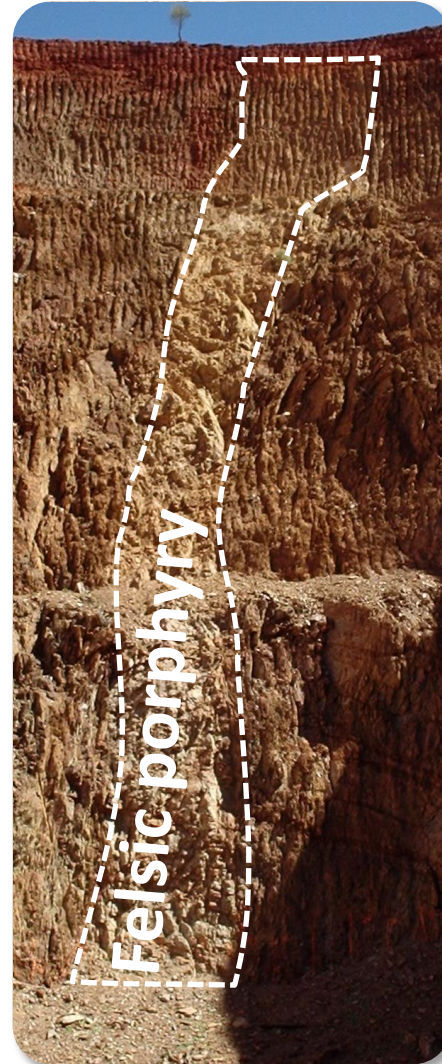
Recent drill intersections sit outside current Resource model and have delivered gold mineralisation below and along strike of the current Mertondale Resource



# Mertondale 3

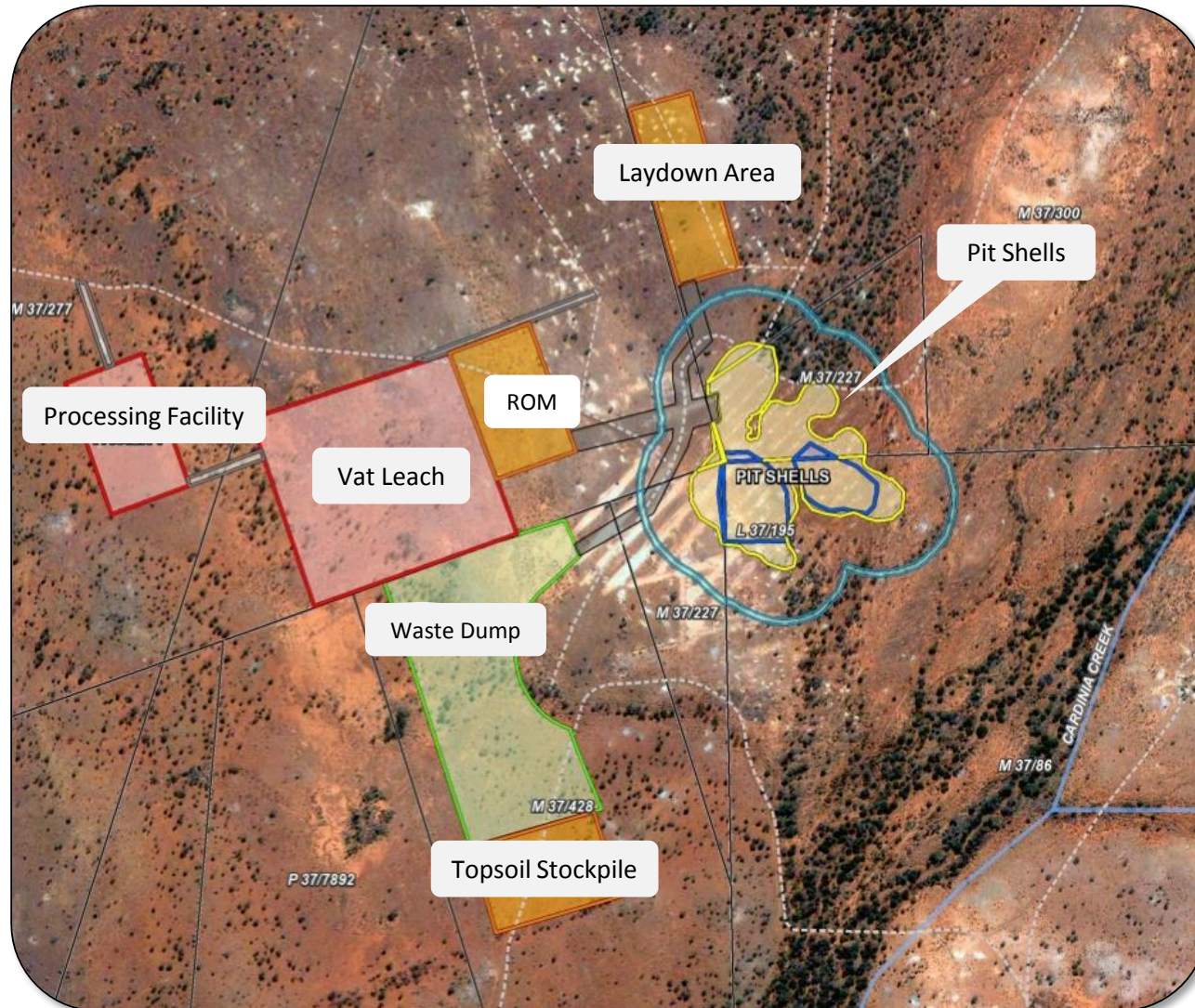
## Underground Potential Beginning to Grow

- Large portion of mineralisation sits below current open pit Resource at Mertondale 3
- Recent drilling confirms mineralisation persists at depth
- Mineralisation is concentrated within and at the margins of a distinct felsic porphyry
- Focus of potential underground development





# Near Term Production Opportunity Identified at Cardinia



## HIGHLIGHTS :

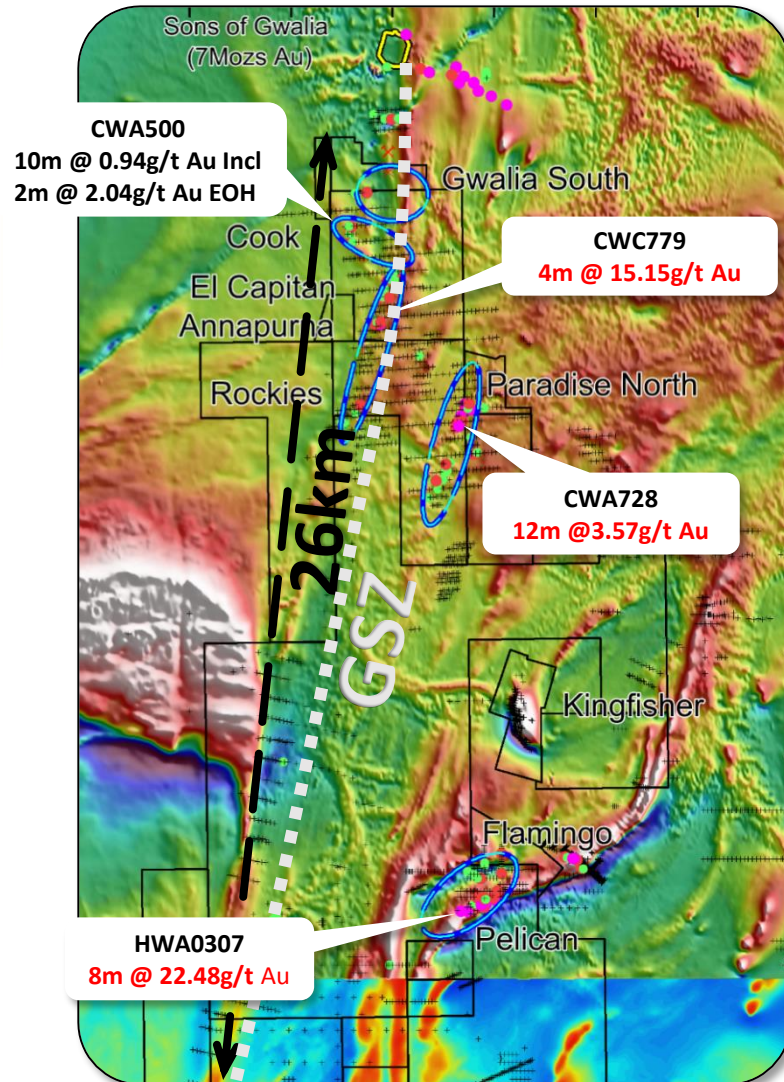
- Outstanding early-stage mining opportunity identified with low cost start-up open pits at Lewis, within the larger +120,000oz Bruno-Lewis Resource.
- Advanced mine plans and approvals completed, clearing the way for a rapid start-up to mining operations.
- Free dig, shallow supergene ore at Cardinia has potential for inexpensive life-of-mine operating cost



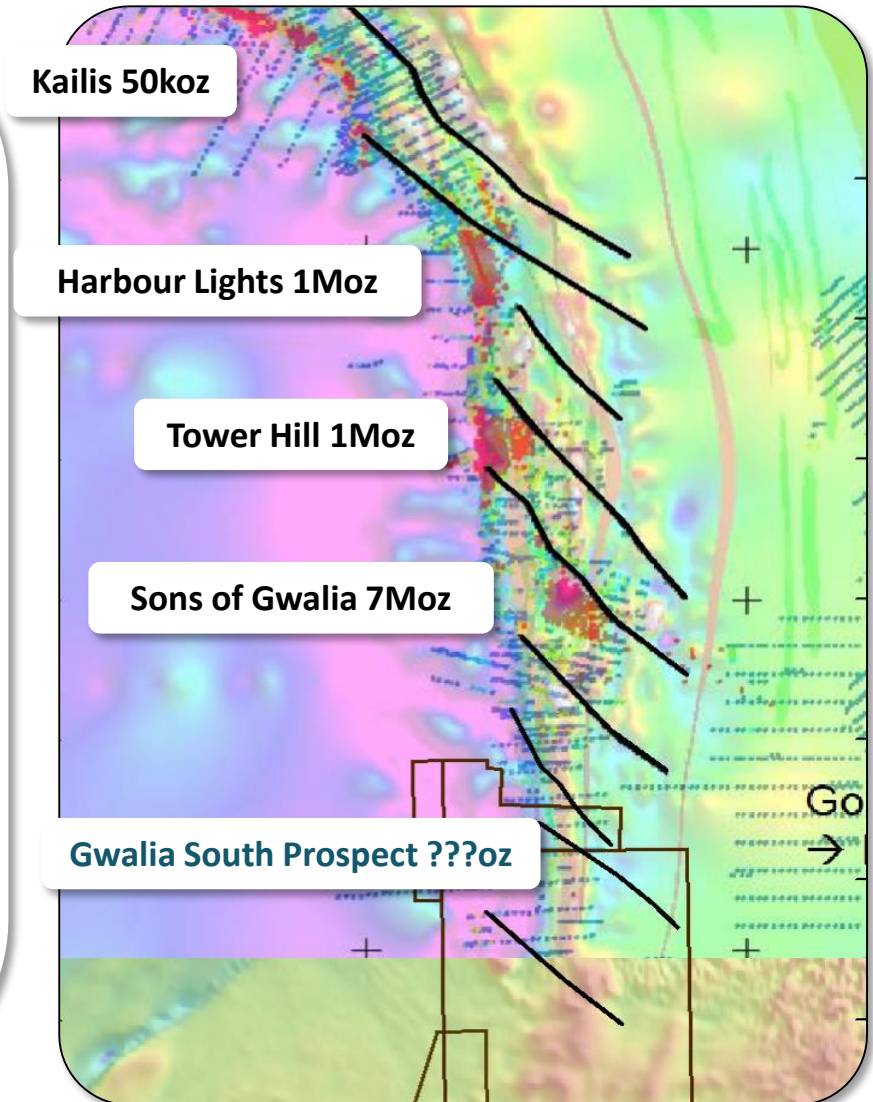


# Desdemona Project Camp Scale Targets

## Unlocking the Potential along the World Class Gwalia Shear Zone

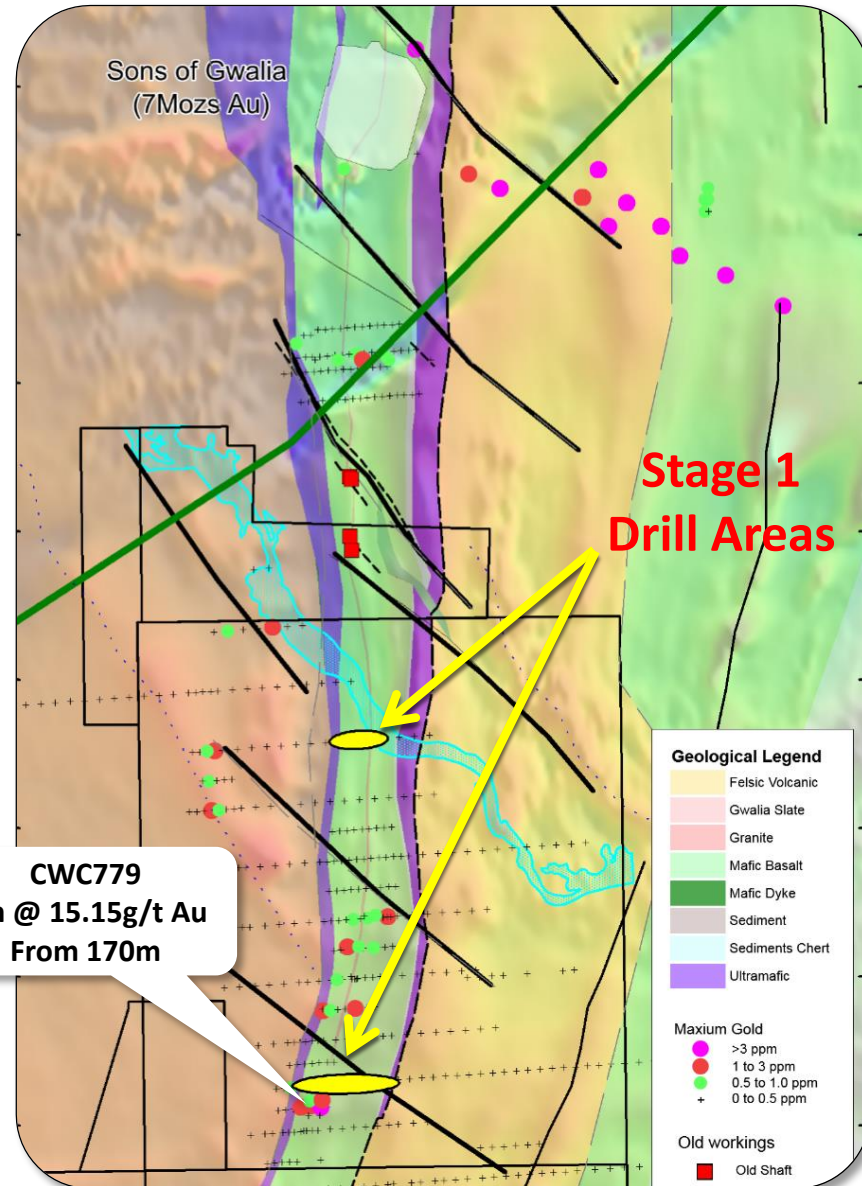


- Gwalia Shear Zone hosts Multiple World Class Gold Deposits
- Kin Mining's Gwalia Shear Zone coverage is now 26 strike kilometers commencing immediately south of the Sons of Gwalia mine
- Multiple gold targets identified along the newly acquired Gwalia South corridor
- Gold hosting geology and structural sequence continues through into Kin's tenure





# Gwalia South Camp Scale Target



- 2.5km south of Sons of Gwalia (7Moz) Mine
- Same geological sequence
- Same structural regime that is found at multiple Million ounce deposits
- Poorly tested due to predominately vertical shallow aircore drilling by previous owners
- 1600m Stage 1 drill programme is planned to commence in early 2016
- Drilling planned near historic Annapurna Prospect CWC779  
**4m @ 15.15g/t Au**



# Why Invest in Kin Mining?

Quality team. Quality projects. Clear Pathway to Production and Growth

- Kin Mining are on the path to an early cash flow.
- Outstanding tenement package within the prolific Leonora region.
- Strong board and management with track record of making discoveries and running successful mining operations.
- Acquisition of the Leonora Gold Project provides an outstanding, low risk pathway to production:
  - *Near-term production opportunity at Cardinia - Lewis*
  - *PFS commenced*
- Numerous exciting exploration opportunities within broader project portfolio.
- Highly leveraged to growth through acquisition and exploration success – market cap of ~\$7 Million (@ 0.088 cents).







# Thank You



# Define ... Develop ... Deliver

**Kin Mining NL Office**  
342 Scarborough Beach Road  
Osborne Park, WA 6017

**Mailing Address**  
PO Box 565  
Mount Hawthorn, WA 6915

**Phone:** (08) 9242 2227  
**Email:** [info@kinmining.com.au](mailto:info@kinmining.com.au)  
[www.kinmining.com.au](http://www.kinmining.com.au)