



# **Kin Mining NL**

## **An Emerging West Australian Gold Developer**

Investor Presentation – August 2016

# Disclaimer

This presentation is not a prospectus nor an offer for securities in any jurisdiction nor a securities recommendation. The information in this presentation is an overview and does not contain all information necessary for investment decisions. In making investment decisions in connection with any acquisition of securities, investors should rely on their own examination of Kin Mining NL and consult their own legal, business and/or financial advisers.

The information contained in this presentation has been prepared in good faith by Kin Mining NL, however no representation or warranty expressed or implied is made as to the accuracy, correctness, completeness or adequacy of any statements, estimates, opinions or other information contained in this presentation. To the maximum extent permitted by law, Kin Mining NL, its directors, officers, employees and agents disclaim liability for any loss or damage which may be suffered by any person through the use or reliance on anything contained in or omitted from this presentation.

Certain information in this presentation refers to the intentions of Kin Mining NL, but these are not intended to be forecasts, forward looking statements or statements about future matters for the purposes of the Corporations Act or any other applicable law. The occurrence of events in the future are subject to risks, uncertainties and other factors that may cause Kin Mining NL's actual results, performance or achievements to differ from those referred to in this presentation. Accordingly, Kin Mining NL, its directors, officers, employees and agents do not give any assurance or guarantee that the occurrence of the events referred to in the presentation will actually occur as contemplated

## **Competent Persons Statement**

*The information contained in this report relates to information compiled or reviewed by Mr. Don Harper who is a Fellow of the (AusIMM), Mr. Paul Maher who is a member of the (AusIMM) and Mr. Simon Buswell-Smith who is a Member of the Australian Institute of Geoscientists (MAIG), both are employees of the company and fairly represent this information. Mr. Harper, Mr. Maher and Mr. Buswell-Smith have sufficient experience of relevance to the styles of mineralisation and the types of deposit under consideration, and to the activities undertaken to qualify as Competent Persons as defined in the 2012 edition of the "JORC Australian code for reporting of Exploration Results, Mineral Resources and Ore Reserves". Both consent to the inclusion in this report of the matters based on information in the form and context in which it appears. All are employees of the Company.*

# Corporate Information

## Capital Structure

Market Cap. @ A\$0.245	A\$22.2M
Share Price *	\$0.245
Shares on Issue	90,662,891M
Options @ \$0.20/share	13,775,000M
Cash @ 30 June 2016	A\$1,289,000M

\* As at 26<sup>th</sup> August 2016

## Directors

Terry Grammer  
Trevor Dixon  
Fritz Fitton  
Joe Graziano

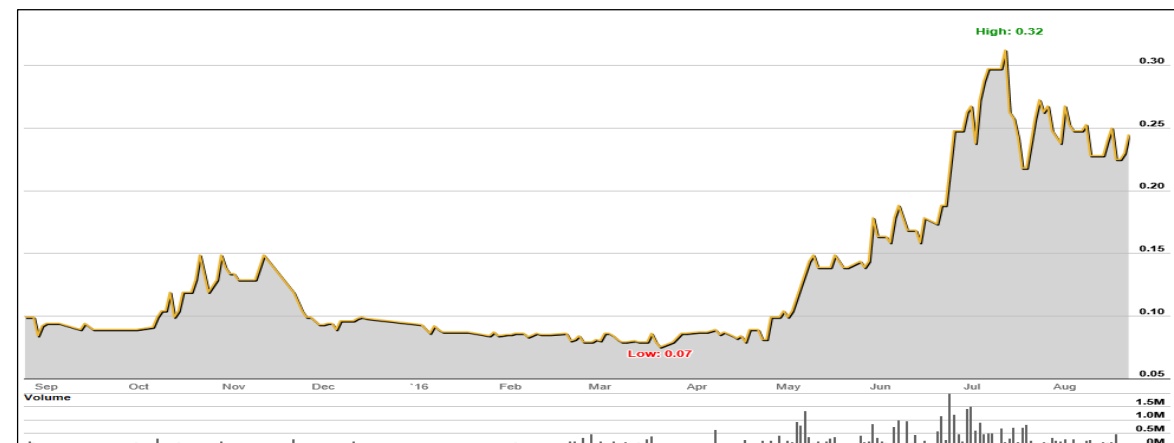
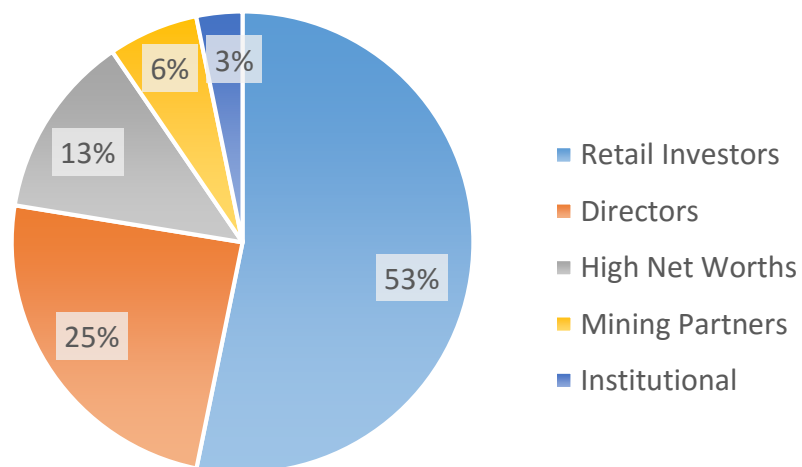
Non-Executive Chairman  
Executive Director  
Technical Director  
Director/Company Secretary

## Management

Don Harper

Chief Executive Officer

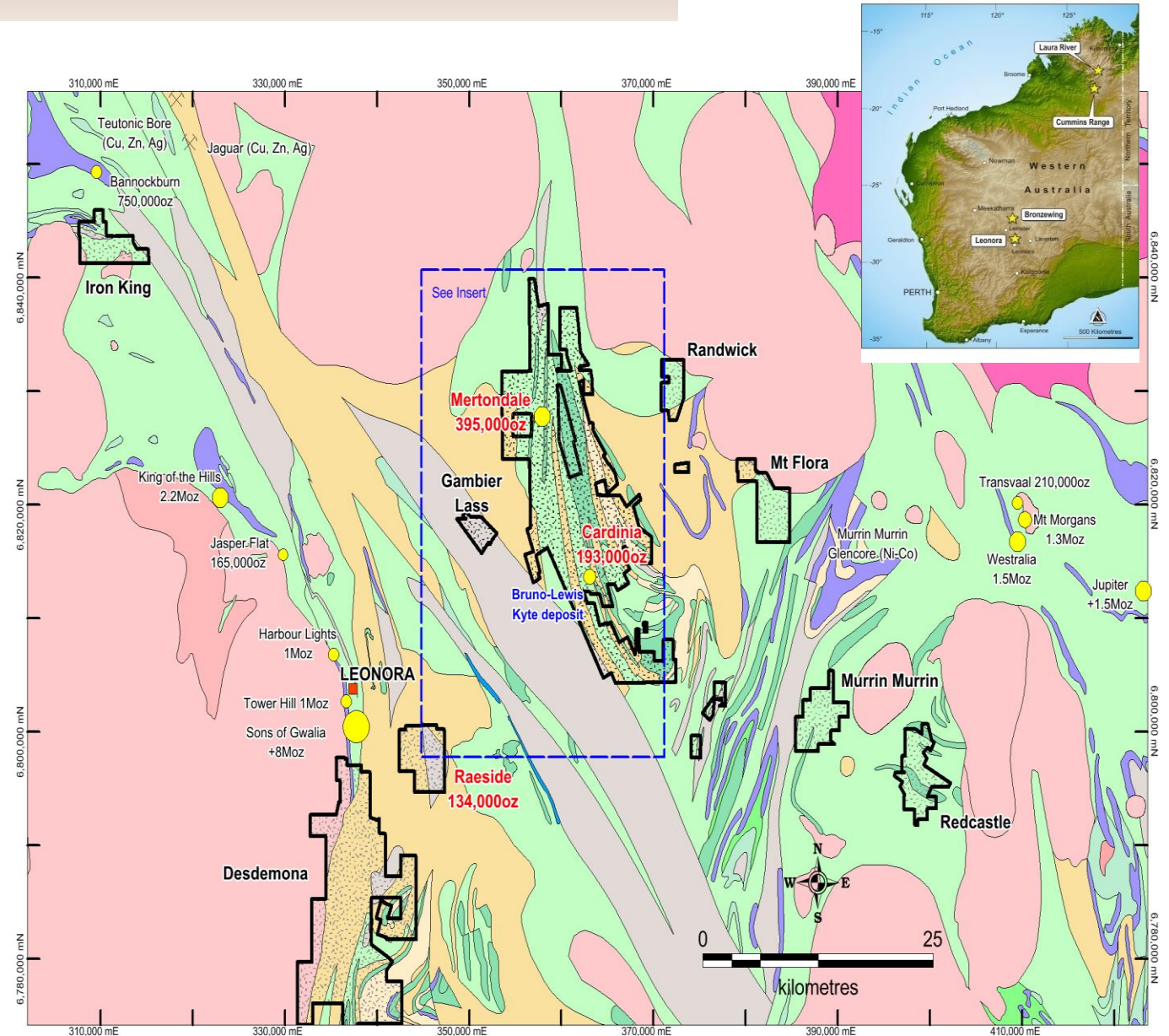
## Shareholders





# Leonora Regional Endowment

- Located in Eastern Gold fields of W.A.
- Regional Endowment of +16Moz Au
- Large, highly Prospective Land Holding of 545sq km
- Flagship **Leonora Gold Project (LGP)** JORC Resources of 722,300 oz Au
- Kin well positioned for new discoveries and development of existing Resources
- Existing Infrastructure in place at Leonora



## About the Leonora Gold Project (LGP)

- In late 2014 at time of low gold prices and a depressed mining industry; Kin acquired the LGP from the administrators of Navigator Resources (ASX:NAV)
- The LGP contains 3 Project Areas Mertondale, Cardinia and Raeside
- A significant amount of drilling data, historical mine production data and mining studies were part of the acquisition
- Navigator also completed a positive March 2009 LGP Pre-Feasibility Study (PFS)
- Kin followed with a positive LGP Scoping Study in May 2016

## About the Leonora Gold Project (LGP) cont.

- Kin has now commenced an updated LGP PFS targeting completion in 2016
- A Definitive Feasibility Study (DFS) is expected to be completed in early 2017
- Following a successful DFS and funding; a Process Plant construction is planned to be underway in 2017 with open pit mining operations commencing late 2017
- Current Resources stand at 722,300ozAu (JORC 2012 constrained within A\$2,000 whittle pit shell) (KIN: Announcement 11 May 2015)
- a further estimated 282,000oz (JORC 2004) estimated outside the \$2,000 pit shell (NAV: Announcement 9 March 2009)
- The Company plans to define the resource target of +1Moz through further drilling and existing resource evaluation. (KIN: Announcement 26 March 2015)



# LGP Resources 722,300oz

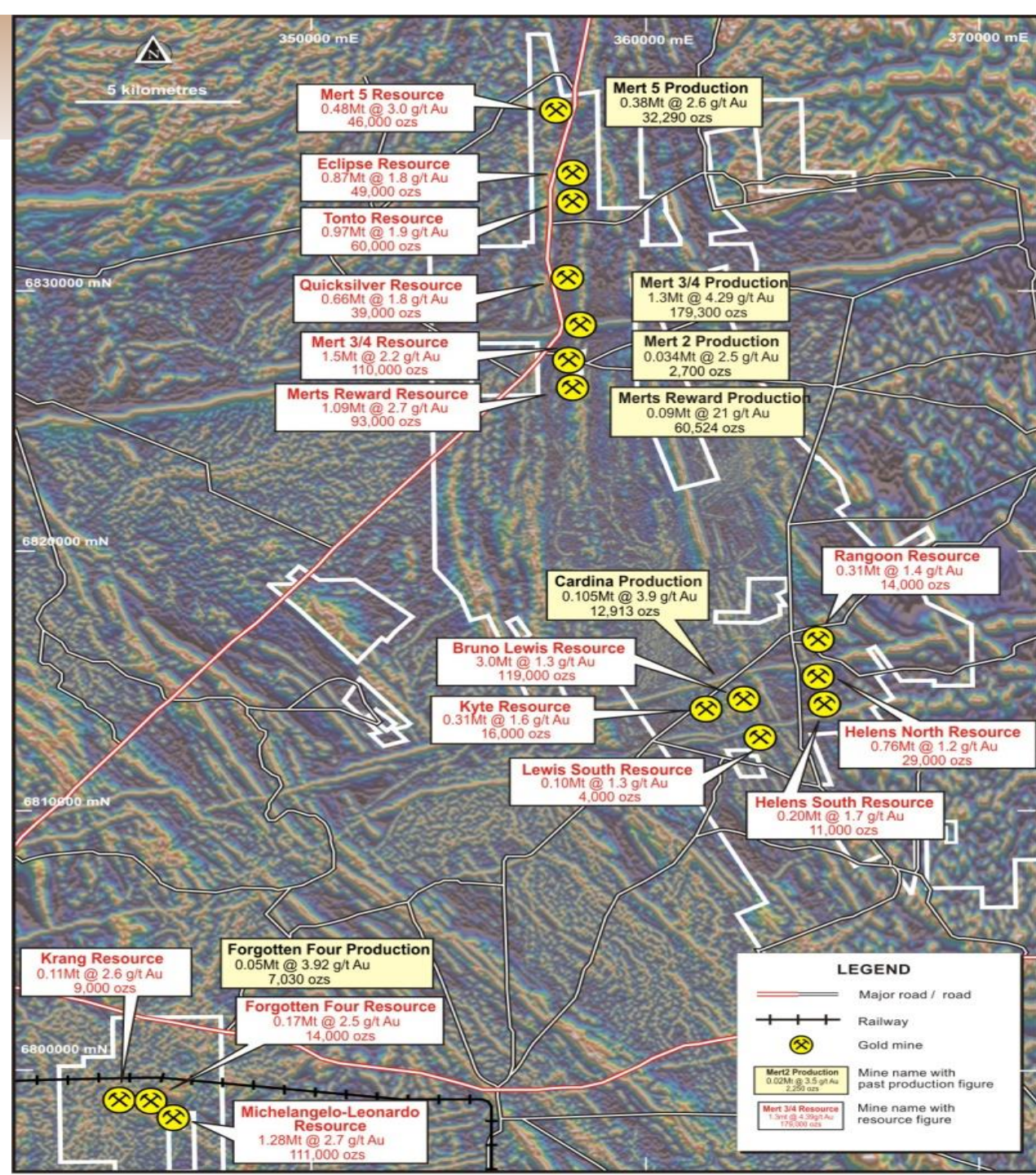
Leonora Gold Project Mineral Resources

Project Area	Lower cut-off grade	Indicated Resources			Inferred Resources			Total Resources		
	g/t Au	Mt	g/t Au	koz	Mt	g/t Au	koz	Mt	g/t Au	koz
<b>Mertondale*</b>										
Mertondale 3_4	0.7	0.87	2.3	65	0.66	2.1	45	1.53	2.2	110
Merton's Reward	0.7	1.01	2.7	87	0.07	1.7	4	1.08	2.6	91
Tonto	0.7	0.97	1.9	60				0.97	1.9	60
Eclipse (Tonto North)	0.7	0.62	1.8	35	0.25	1.7	14	0.87	1.8	49
Mertondale 5	0.7	0.32	3.2	33	0.16	2.7	13	0.48	3.0	46
Quicksilver (Tonto South)	0.7	0.55	1.8	31	0.11	2.1	8	0.66	1.8	39
<b>Subtotal Mertondale</b>		<b>4.34</b>	<b>2.2</b>	<b>311</b>	<b>1.25</b>	<b>2.1</b>	<b>84</b>	<b>5.59</b>	<b>2.2</b>	<b>395</b>
<b>Cardinia**</b>										
Bruno-Lewis Exploration	0.7	1.04	1.1	37	1.52	1.3	63	2.56	1.2	100
Helen's North	0.7	0.63	1.2	24	0.13	1.1	5	0.76	1.2	29
Kyte	0.7				0.31	1.6	16	0.31	1.6	16
Rangoon	0.7	0.09	1.8	5	0.23	1.3	9	0.31	1.4	14
Lewis Grade Control	0.7	0.29	1.4	13				0.29	1.4	13
Bruno Grade Control	0.7	0.11	1.4	5	0.03	1.1	1	0.15	1.3	6
Helen's South	0.7	0.19	1.8	11	0.01	1.3	0	0.20	1.7	11
Lewis South	0.7				0.10	1.3	4	0.10	1.3	4
<b>Subtotal Cardinia</b>		<b>2.35</b>	<b>1.3</b>	<b>95</b>	<b>2.44</b>	<b>1.3</b>	<b>98</b>	<b>4.79</b>	<b>1.3</b>	<b>193</b>
<b>Raeside</b>										
Michelangelo-Leonardo	0.7	1.28	2.7	111				1.28	2.7	111
Forgotten Four	0.7	0.07	3.0	7	0.10	2.1	7	0.17	2.5	14
Krang	0.7	0.11	2.6	9				0.11	2.6	9
<b>Subtotal Raeside</b>		<b>1.47</b>	<b>2.7</b>	<b>127</b>	<b>0.10</b>	<b>2.1</b>	<b>7</b>	<b>1.57</b>	<b>2.6</b>	<b>134</b>
<b>TOTAL</b>		<b>8.16</b>	<b>2.0</b>	<b>533</b>	<b>3.665</b>	<b>1.6</b>	<b>189</b>	<b>11.825</b>	<b>1.9</b>	<b>722</b>

\* Resource estimate by McDonald Speijers, 2009 with Merton's Reward depleted by McDonald Speijers in 2010.

\*\* Resource estimate by Runge Limited, 2009 with Bruno Grade Control depleted by Runge in 2010.

Notes: Assay top cuts for Mertondale and Raeside are variable but generally between 10-20g/t Au and are 15g/t Au at Cardinia. No allowance has been made for dilution or ore loss. All resources are constrained by open pit shells optimised at A\$2,000/oz.





## Positive Studies Completed – Navigator PFS 2009 & Kin Scoping Study 2016

Key Financial Parameter	NAVIGATOR MARCH 2009 PFS Base Case A\$1,250 oz 748,000oz Min Resource	KIN SCOPING STUDY MAY 2016 Base Case A\$1,500 oz 722,300oz Min Resource
NPV (A\$M)	\$43	\$56.3
Revenue (A\$M)	\$389	\$461.6
Free Cashflow (A\$M)	\$129	\$142.7
Capital Costs (A\$M)	\$45	\$55.0
C1 Cash Cost (A\$/oz)	\$813	\$1,010
AISC (A\$/oz)		\$1,185
IRR (%)	32%	30%
* All key parameters based on scoping study inputs and Whittle pit shells and are indicative only		

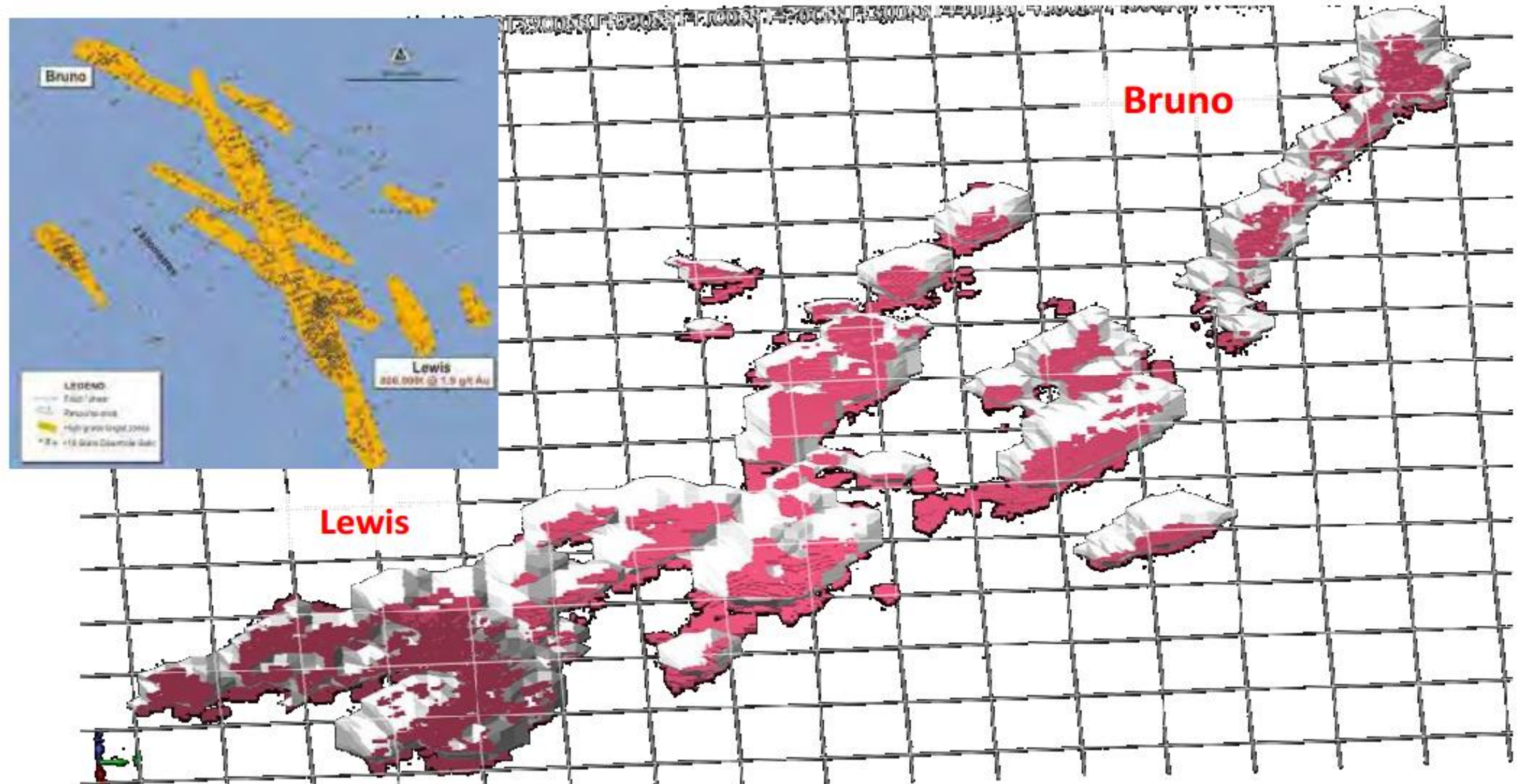


## NEXT STEP underway– Update LGP PFS

Based on developing a Profitable, High Margin , low cost gold operation @ 45,000-55,000 oz/pa

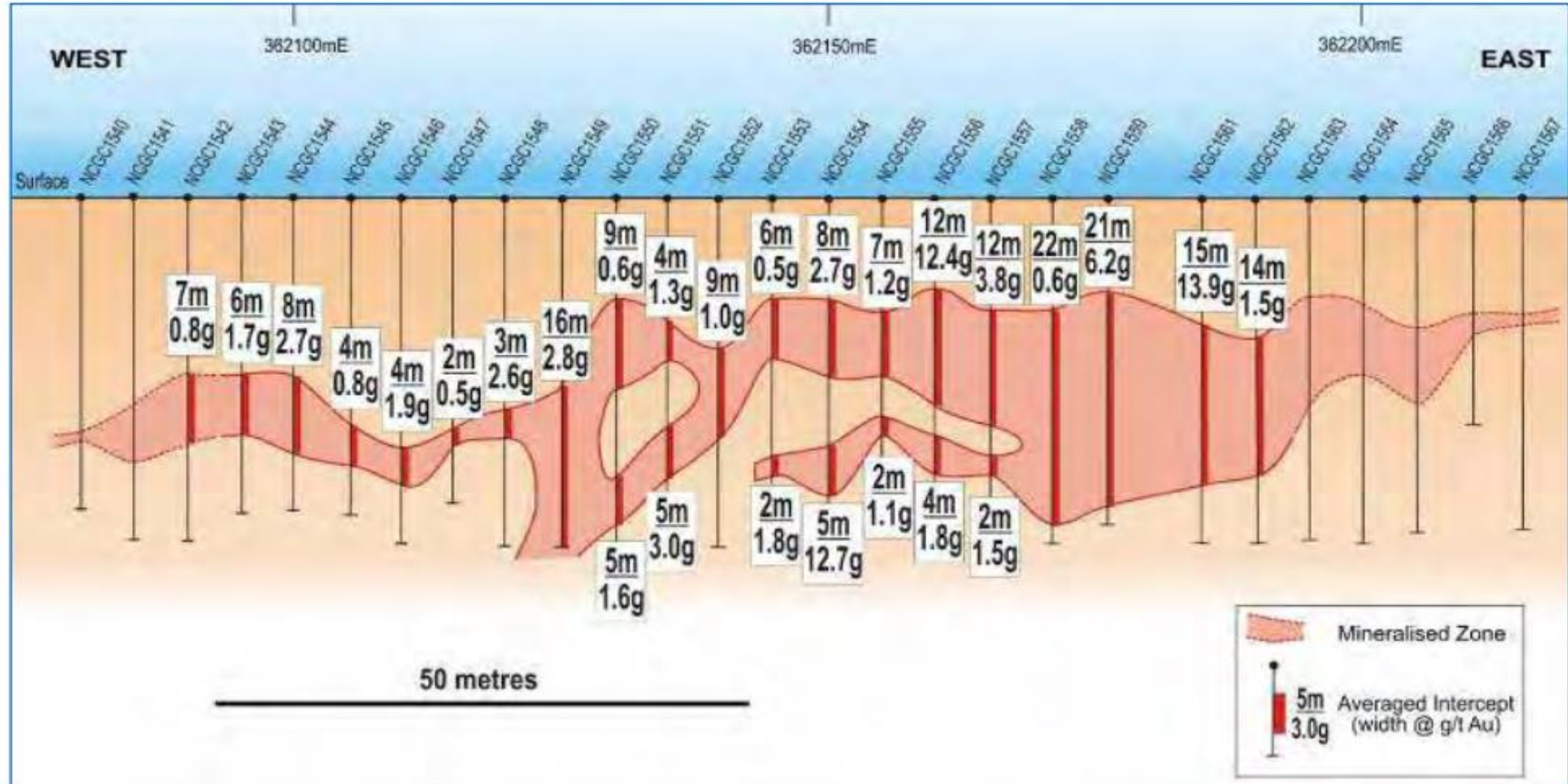
- PFS to evaluate building a stand alone new 1Mtpa or 600ktpa (expandable to 1Mtpa) conventional CIL gold Processing Plant.
- Strategy is to focus on low strip ratio open pit mining
- Start production on high grade, low risk, soft, free milling oxide ore and increase oxide resources with further drilling.
- Target high grade starter pits at Mertondale to blend with higher grade oxide ore.
- Evaluate low cost heap leaching of low grade oxide ore that fall below oxide mill cut-off grade to create dual income stream.
- Evaluate creating a synergy between the mill & heap leaching...eg. pregnant liquor could be pumped directly to the process plant CIL circuit, significantly reducing upfront heap leach capital.
- Consultants engaged to source second hand CIL process plant or key second hand long lead components to reduce upfront Capex and reduce process plant build time.

## BASE LOAD OXIDE FEED SOURCE – Cardinia: Bruno & Lewis





# Cardinia Oxide Base Load – Typical Supergene long Section



## Lewis Trial Mining

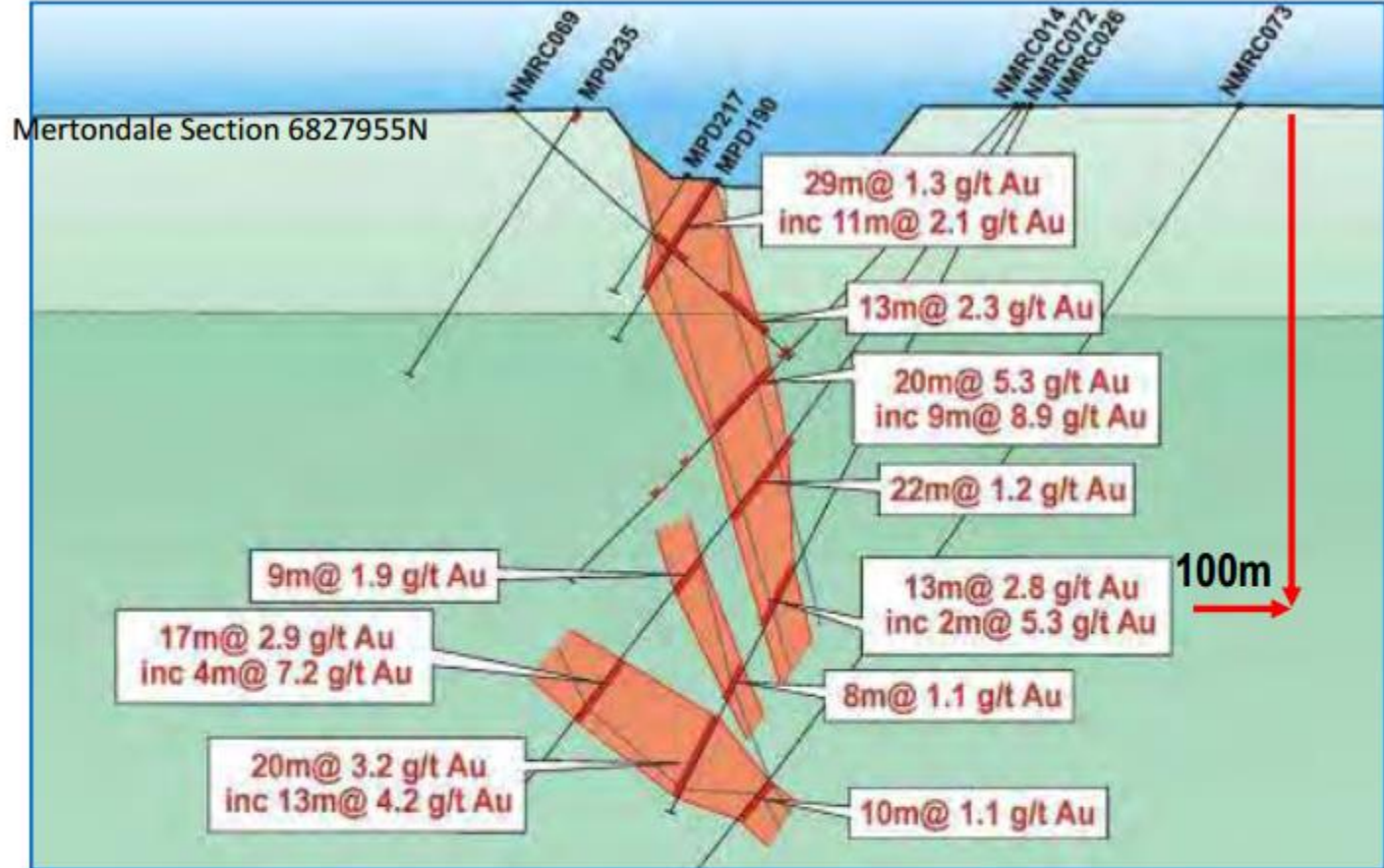
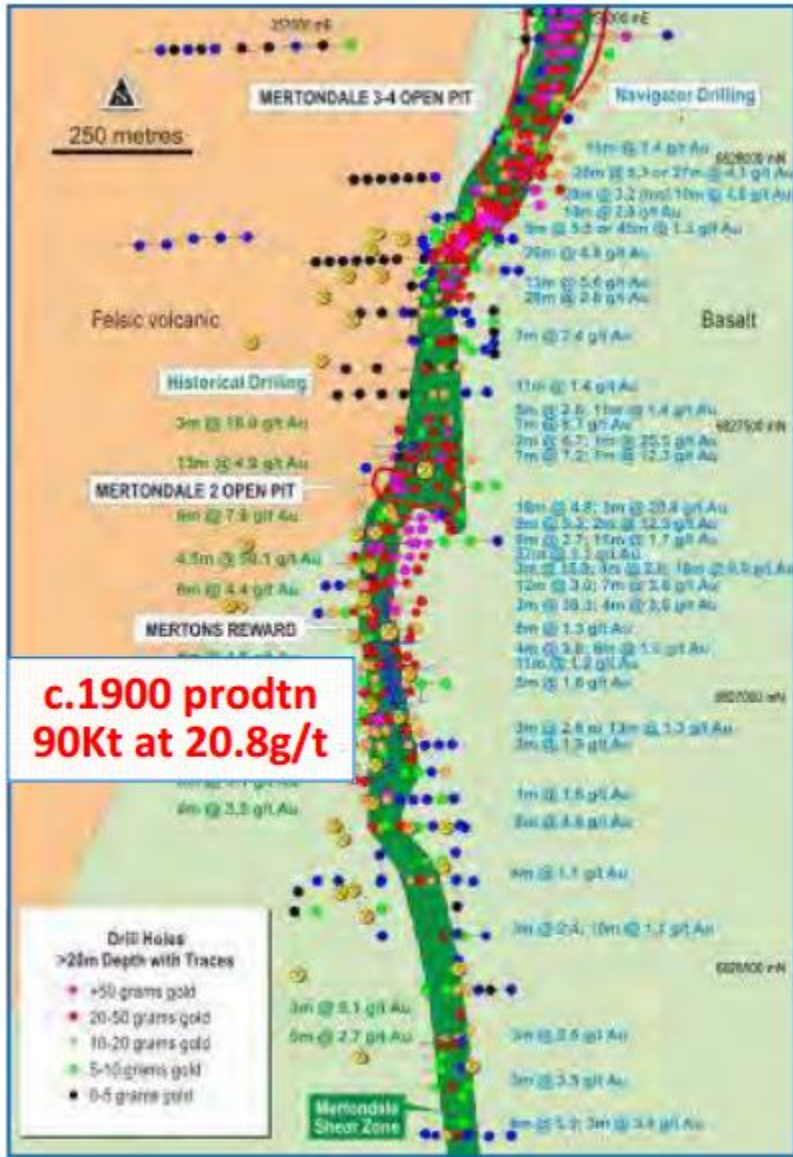
- Estimated 15,000t of Ore has been successfully mined, trucked and toll milled in Kalgoorlie
- First of 3 expected Gold Pours completed successfully
- Awaiting full mine to mill reconciliation; expected early September 2016

The overall objectives of the Lewis Trial Mining in terms of the LGP PFS is as follows:

- To visually observe the **structural controls** on the mineralization
- Gain understanding of oxide **materials handling** & milling cost estimates;
- verify ore **grades**;
- verify total gold **recovery**;
- verify **bulk densities** used in the Cardinia JORC 2012 resource estimates;
- provide bulk samples for low grade heap leaching testwork



**ADDITIONAL FEED SOURCE -Mertondale South: Mertons Reward; Mertons 2; Mertons 3/4 and Mertons 5**



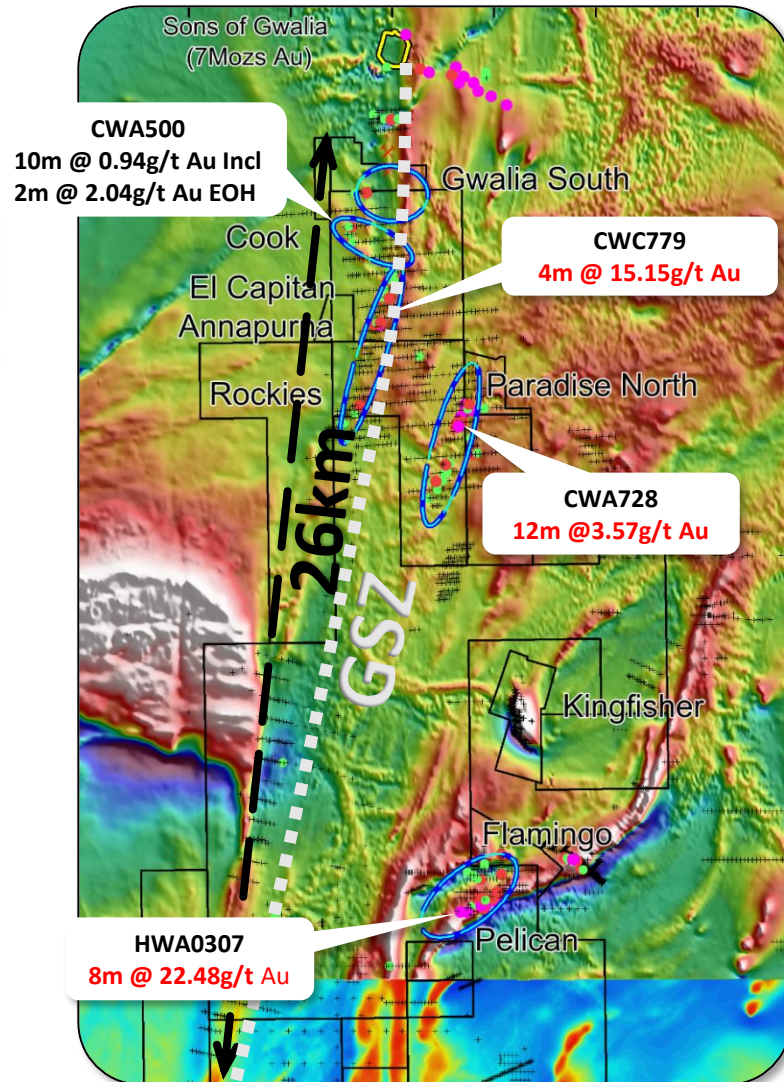


## **EXPLORATION & RESOURCE EXPANSION OPPORTUNITIES**

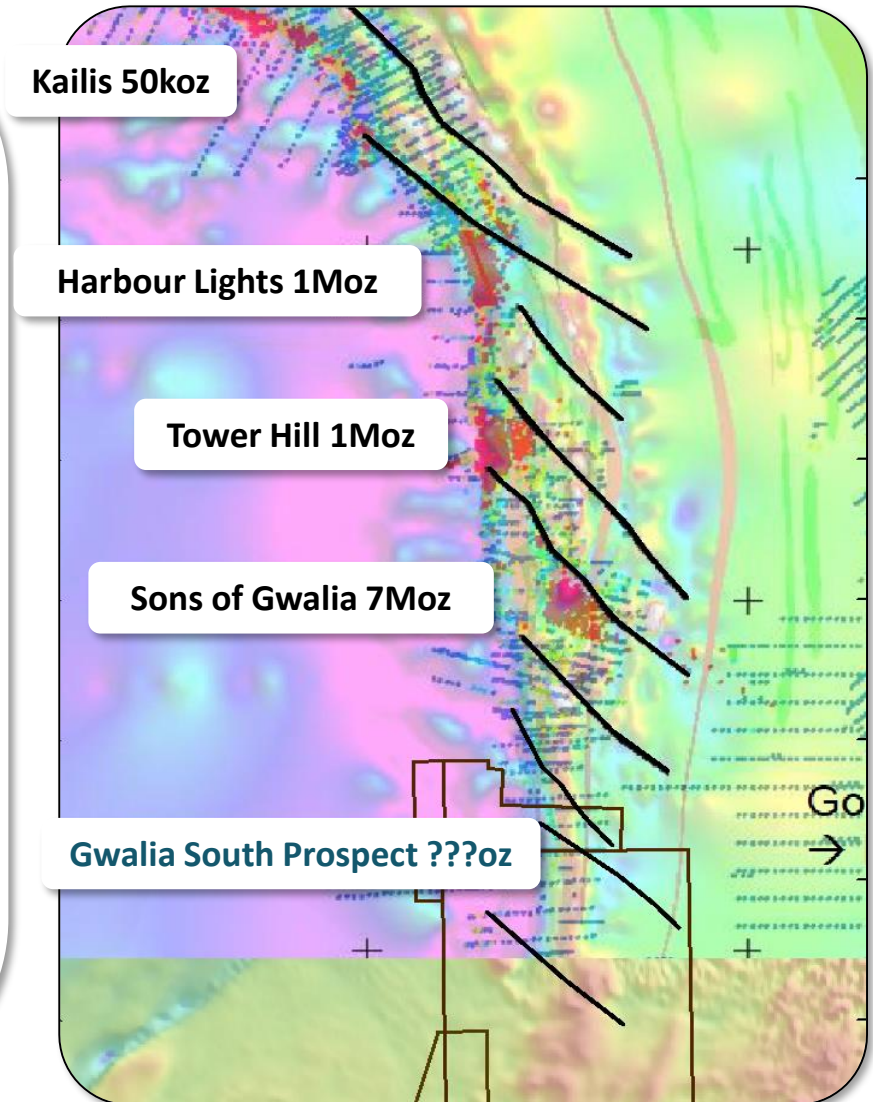


# EXPLORATION -Drilling Underway in September 2016

## Unlocking the Potential along the World Class Gwalia Shear Zone

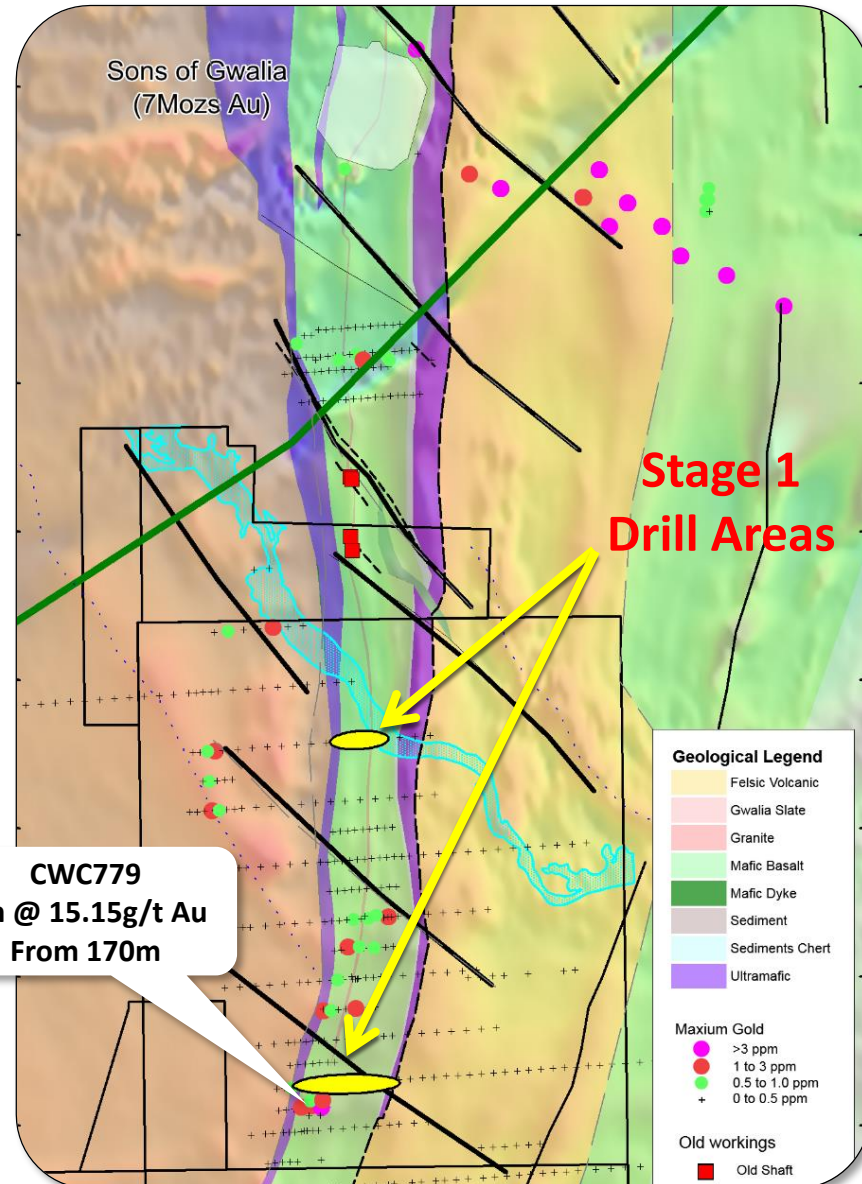


- Gwalia Shear Zone hosts Multiple World Class Gold Deposits
- Kin Mining's Gwalia Shear Zone coverage is now 26 strike kilometers commencing immediately south of the Sons of Gwalia mine
- Multiple gold targets identified along the newly acquired Gwalia South corridor
- Gold hosting geology and structural sequence continues through into Kin's tenure





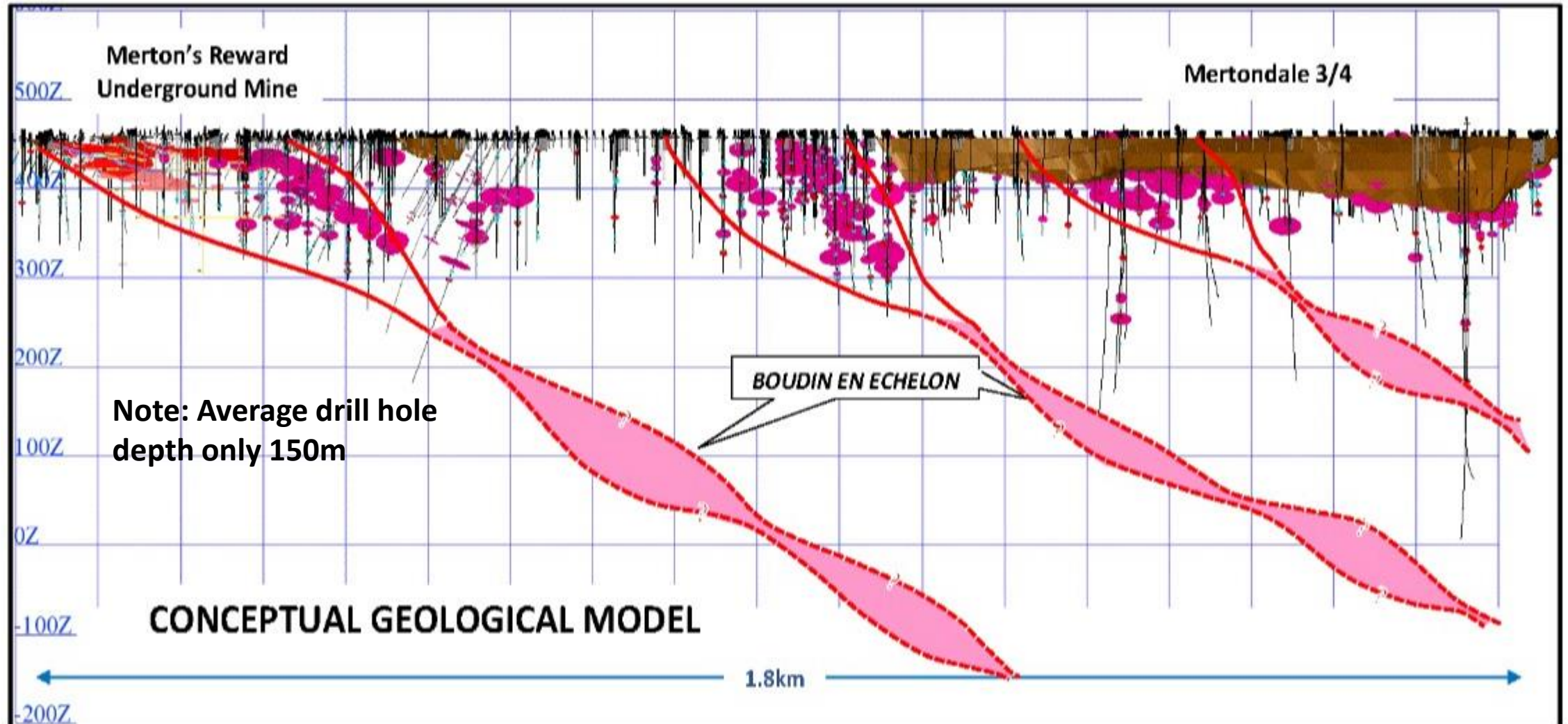
# Gwalia South Camp Scale Target



- 2.5km south of Sons of Gwalia (+8Moz) Mine
- Same geological mine sequence
- Same structural regime that is found at multiple Million ounce deposits
- Poorly tested due to predominately vertical shallow aircore drilling by previous owners
- 3,000m Stage 1 drill programme is planned to commence in September 2016
- Drilling planned near historic Annapurna Prospect CWC779 **4m @ 15.15g/t Au**



## Exploration Potential downplunge Defined Along the Mertondale Shear Zone (Conceptual Targets)






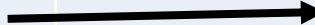

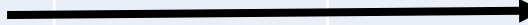



# Tonto-Eclipse Resource Expansion Upside



- ◆ Located 6km north of Mertondale
- ◆ 13m @ 6.7g/t Au , 7m @ 41g/t Au  
12m @ 16.9g/t Au, 12m @ 14.8g/t Au  
16m @ 7.5g/t Au, 5m @ 28.6g/t Au  
19m @ 4.4g/t Au, 8m @ 14.4g/t Au
- ◆ Resource 109,000oz (1.9g/t Au)  
(0.7g/t Au cut-off)
- ◆ 3km Tonto-Quicksilver zone  
...numerous intersections not closed off

# Indicative Timeline

Current Schedule	2016 (1 <sup>st</sup> Half)	2016 (2 <sup>nd</sup> Half)	2017 (1 <sup>st</sup> Half)	2017 (2 <sup>nd</sup> Half)	2018 (1 <sup>st</sup> Half)
Scoping Study 	<b>Complete</b> Demonstrated a base case scenario of an open cut mine delivering 1Mtpa at 1.7g/t average gold grade to a standalone CIL plant over a 6 year mine life				
Lewis Trial Mine Operation	Approvals granted. Mining commenced in April	Toll Treatment <b>Gold Pour</b> 			
Updated PFS	<b>Commenced</b>				
DFS & Funding					
Approvals					
New Plant Construction					
Mining					



# Why Invest in Kin Mining?

**The right commodity -GOLD**

**Operating in Australia**

**Experienced Team**

**Clear Pathway to making money**

**Outstanding Exploration Opportunities**

**Tight Share Register ~91M shares**

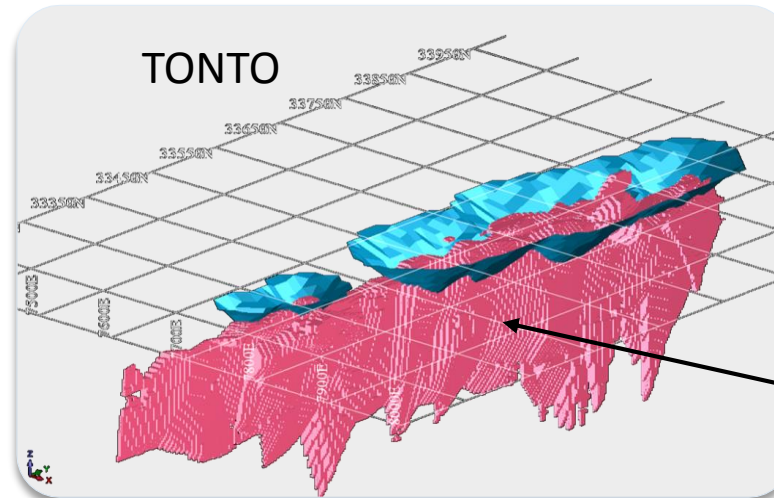
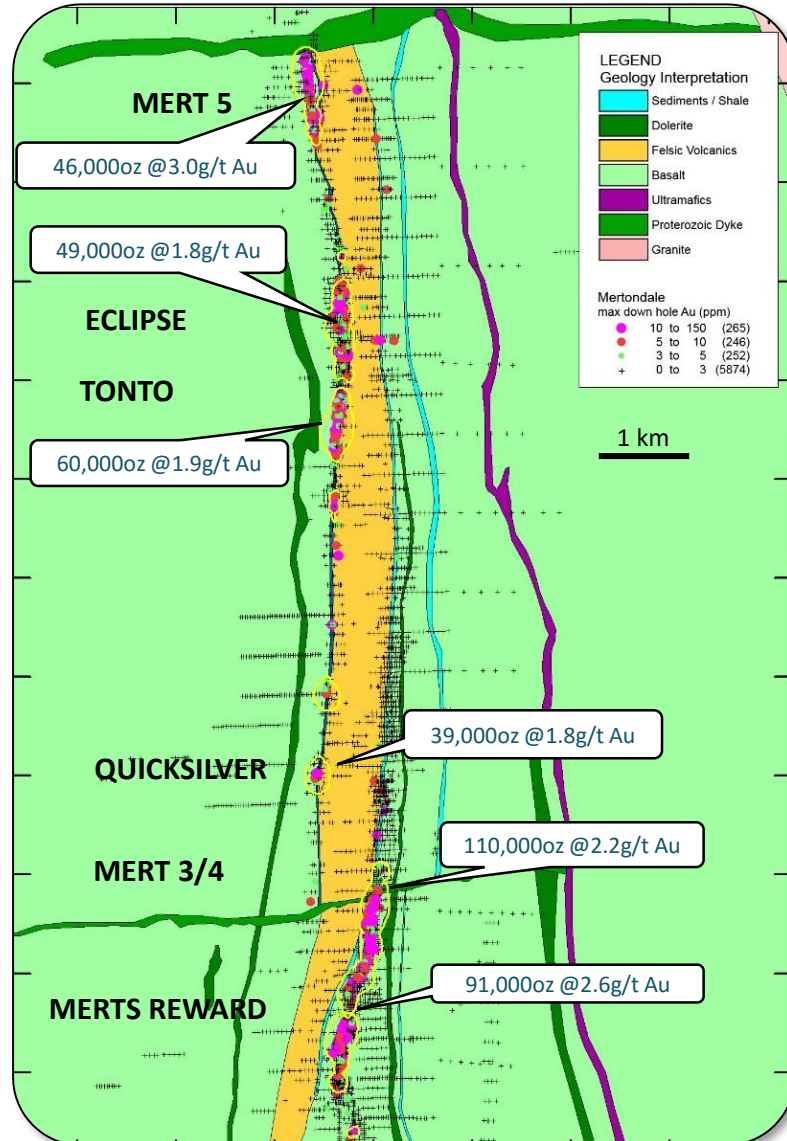




# APPENDICES

# APPENDIX A -Mertondale Project

## 395,000oz of Gold Along the Mertondale Shear Zone... and Growing

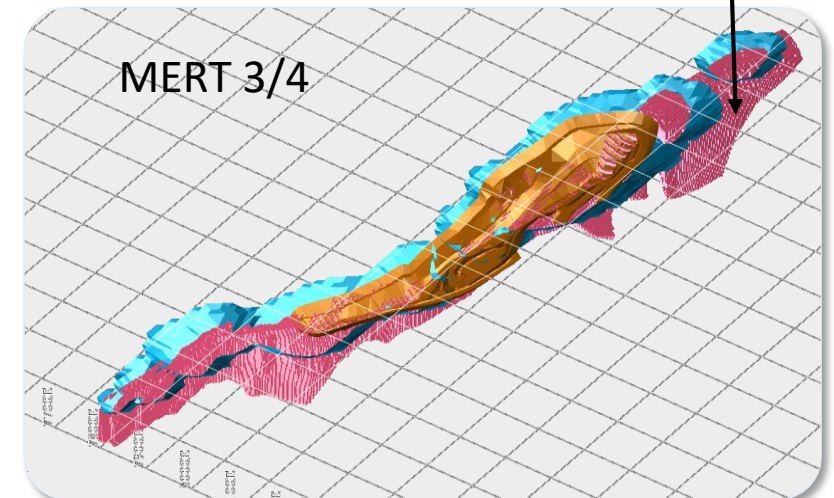


Resource Optimisation (blue shell)

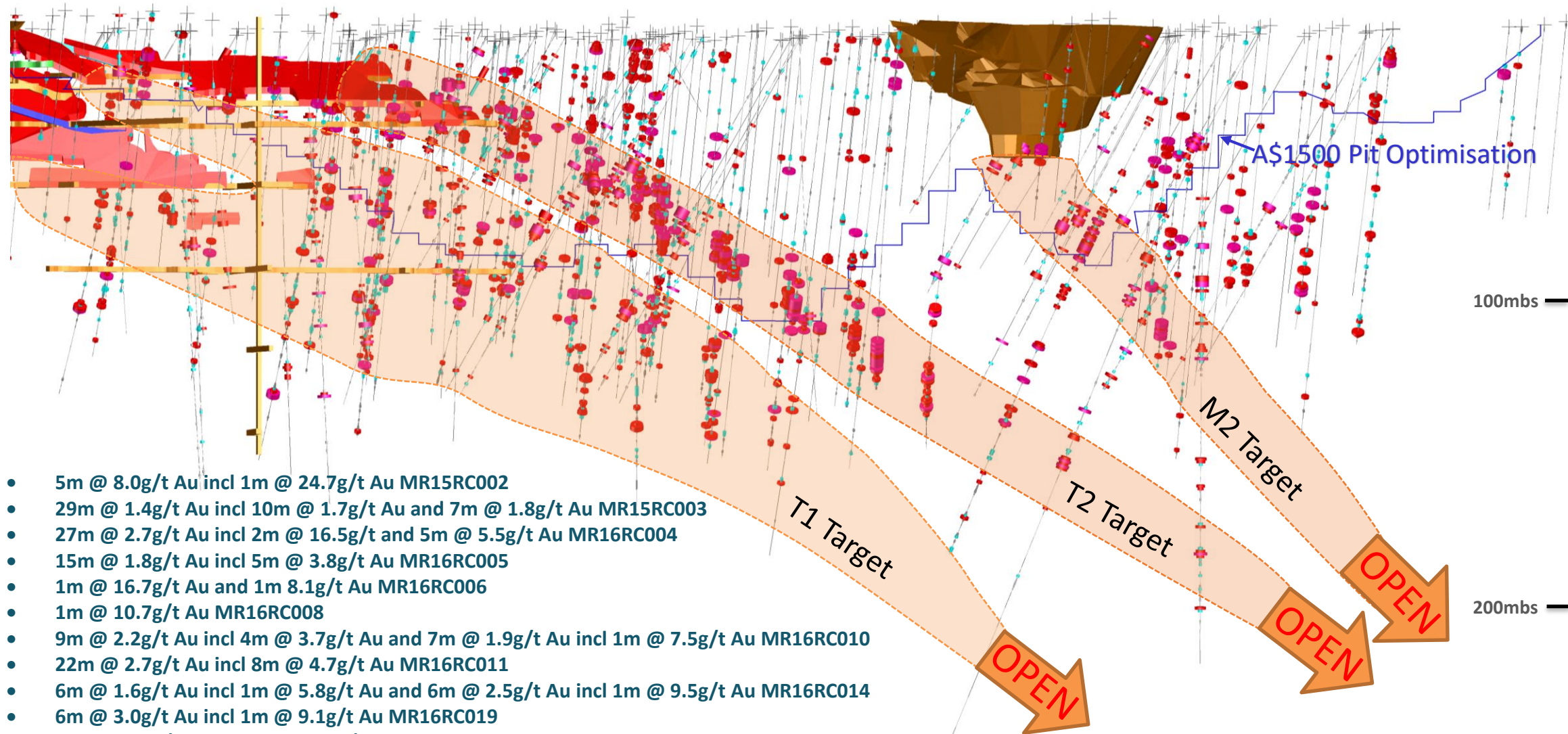
- Multiple open cut Resources creates a flexible mine plan

Mineralisation Outside Current Resource

- Core Asset for the Pre-feasibility Study
- Potential to grow Resources along Shear Zone



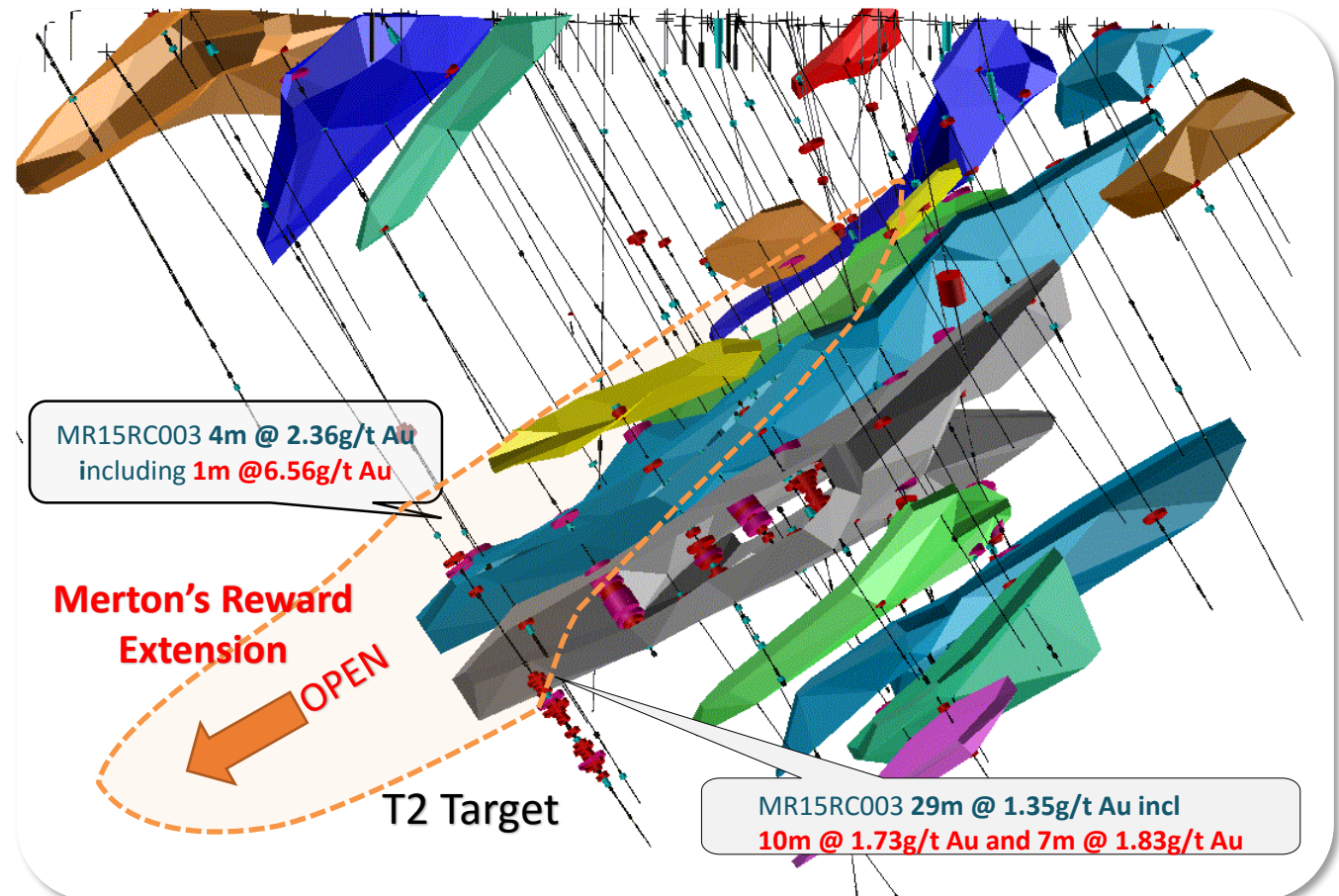
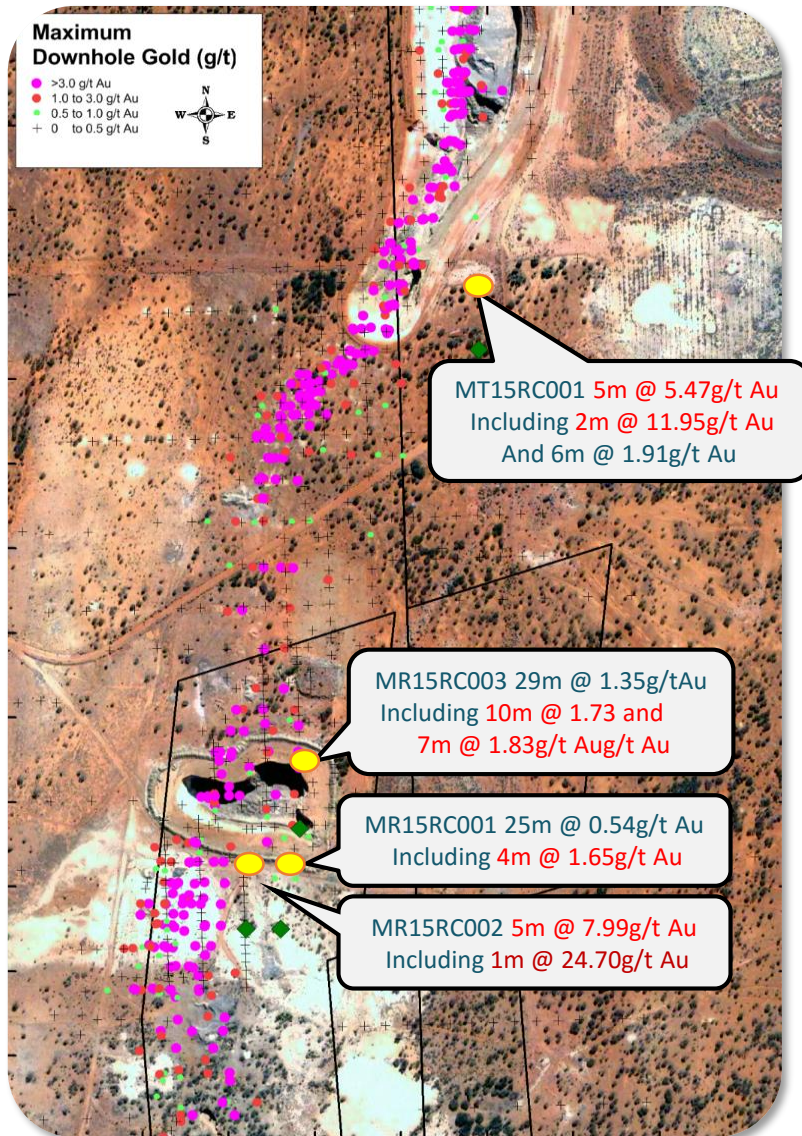
# APPENDIX B -Merton's Reward Maiden Drilling Results



- 5m @ 8.0g/t Au incl 1m @ 24.7g/t Au MR15RC002
- 29m @ 1.4g/t Au incl 10m @ 1.7g/t Au and 7m @ 1.8g/t Au MR15RC003
- 27m @ 2.7g/t Au incl 2m @ 16.5g/t and 5m @ 5.5g/t Au MR16RC004
- 15m @ 1.8g/t Au incl 5m @ 3.8g/t Au MR16RC005
- 1m @ 16.7g/t Au and 1m 8.1g/t Au MR16RC006
- 1m @ 10.7g/t Au MR16RC008
- 9m @ 2.2g/t Au incl 4m @ 3.7g/t Au and 7m @ 1.9g/t Au incl 1m @ 7.5g/t Au MR16RC010
- 22m @ 2.7g/t Au incl 8m @ 4.7g/t Au MR16RC011
- 6m @ 1.6g/t Au incl 1m @ 5.8g/t Au and 6m @ 2.5g/t Au incl 1m @ 9.5g/t Au MR16RC014
- 6m @ 3.0g/t Au incl 1m @ 9.1g/t Au MR16RC019
- 23m @ 2.1g/t Au incl 2m @ 8.7g/t Au MR16RC020
- 5m @ 2.3g/t Au incl 2m @ 4.4g/t Au MR16RC021



# APPENDIX C -Merton's Reward Maiden Drilling Delivered

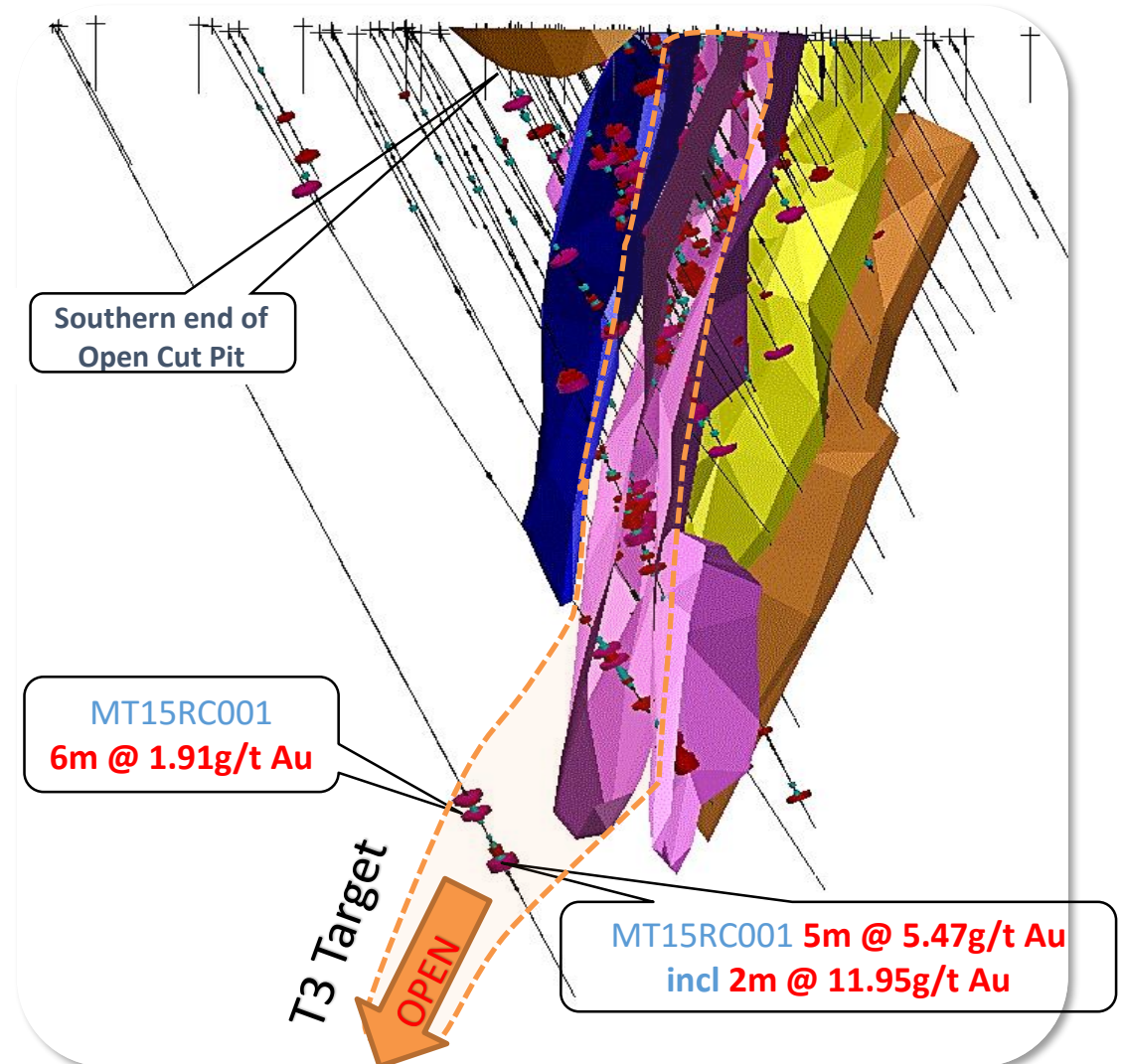
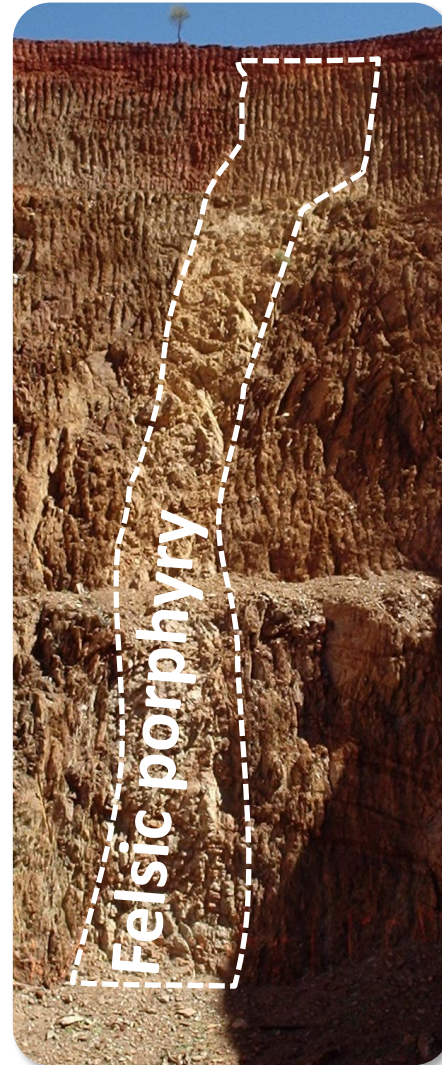


Recent drill intersections sit outside current Resource model and have delivered gold mineralisation below and along strike of the current Mertondale Resource



## APPENDIX D - Mertondale 3

- Large portion of mineralisation sits below current open pit Resource at Mertondale 3
- Recent drilling confirms mineralisation persists at depth
- Mineralisation is concentrated within and at the margins of a distinct felsic porphyry
- Focus of potential underground development





# APPENDIX E - Exploration South of +8Moz Sons of Gwalia

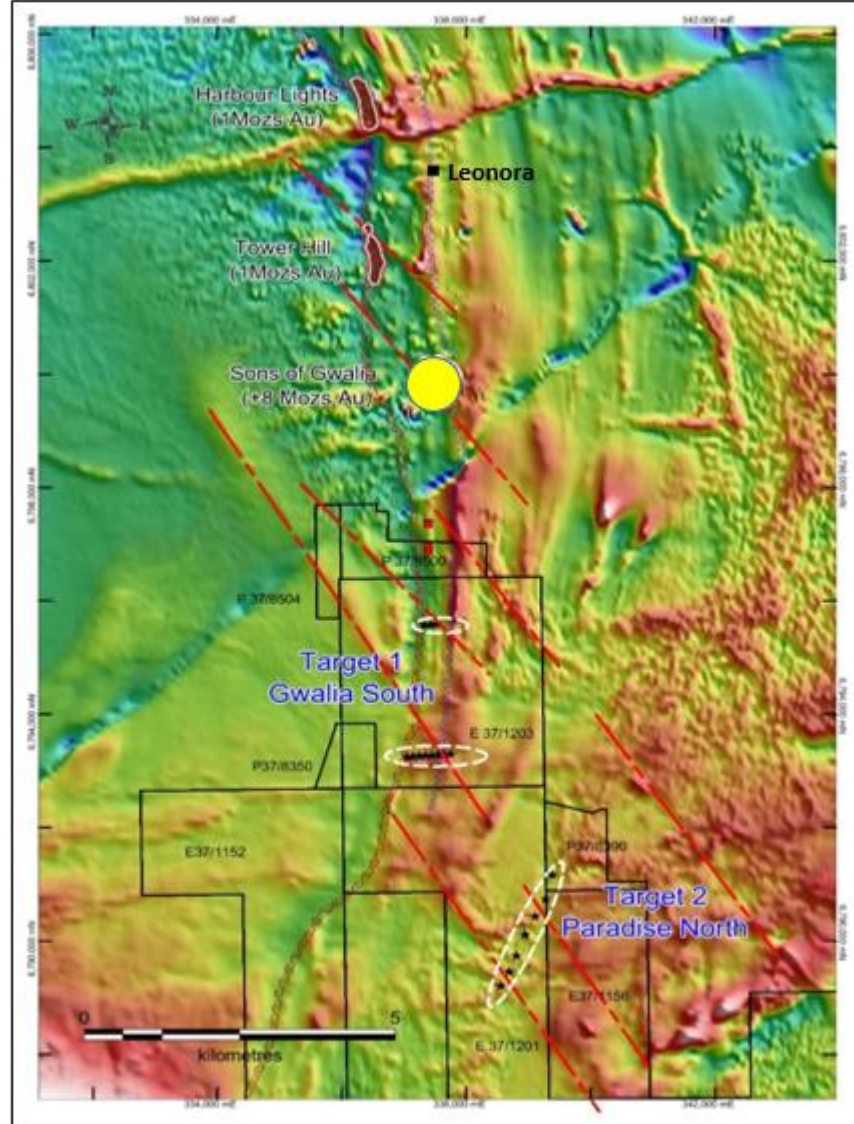


Figure 1– TMI image of the Gwalia South and Paradise North Prospects showing proposed drill sites, target zones, existing mines and interpreted NW structures

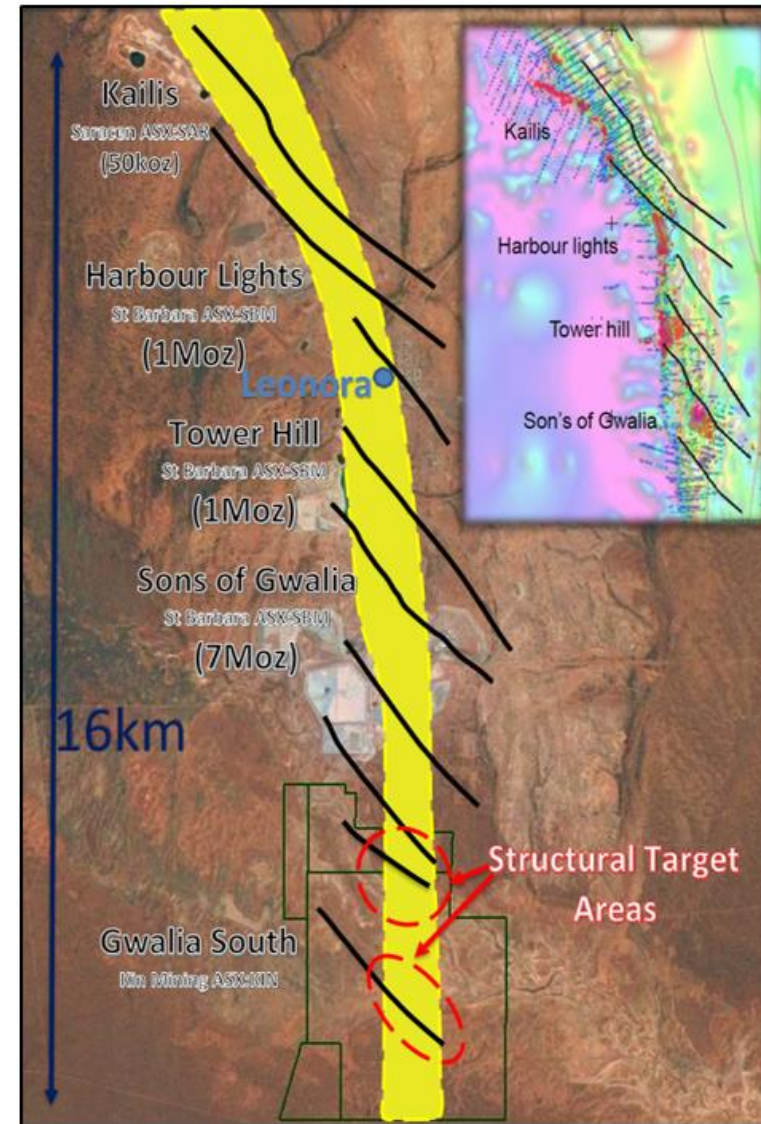


Figure 2– Google earth image highlighting the prospective corridor and the close proximity of the existing Sons of Gwalia mine to the Target areas.