



Kin Mining NL
An Emerging West Australian Gold Developer

Precious Metals Investment Symposium -October 2016

Disclaimer

This presentation is not a prospectus nor an offer for securities in any jurisdiction nor a securities recommendation. The information in this presentation is an overview and does not contain all information necessary for investment decisions. In making investment decisions in connection with any acquisition of securities, investors should rely on their own examination of Kin Mining NL and consult their own legal, business and/or financial advisers.

The information contained in this presentation has been prepared in good faith by Kin Mining NL, however no representation or warranty expressed or implied is made as to the accuracy, correctness, completeness or adequacy of any statements, estimates, opinions or other information contained in this presentation. To the maximum extent permitted by law, Kin Mining NL, its directors, officers, employees and agents disclaim liability for any loss or damage which may be suffered by any person through the use or reliance on anything contained in or omitted from this presentation.

Certain information in this presentation refers to the intentions of Kin Mining NL, but these are not intended to be forecasts, forward looking statements or statements about future matters for the purposes of the Corporations Act or any other applicable law. The occurrence of events in the future are subject to risks, uncertainties and other factors that may cause Kin Mining NL's actual results, performance or achievements to differ from those referred to in this presentation. Accordingly, Kin Mining NL, its directors, officers, employees and agents do not give any assurance or guarantee that the occurrence of the events referred to in the presentation will actually occur as contemplated

Competent Persons Statement

The information contained in this report relates to information compiled or reviewed by Mr. Don Harper who is a Fellow of the (AusIMM), Mr. Paul Maher who is a member of the (AusIMM) and Mr. Simon Buswell-Smith who is a Member of the Australian Institute of Geoscientists (MAIG), all are employees of the company and fairly represent this information. Mr. Harper, Mr. Maher and Mr. Buswell-Smith have sufficient experience of relevance to the styles of mineralisation and the types of deposit under consideration, and to the activities undertaken to qualify as Competent Persons as defined in the 2012 edition of the "JORC Australian code for reporting of Exploration Results, Mineral Resources and Ore Reserves". Both consent to the inclusion in this report of the matters based on information in the form and context in which it appears. All are employees of the Company.

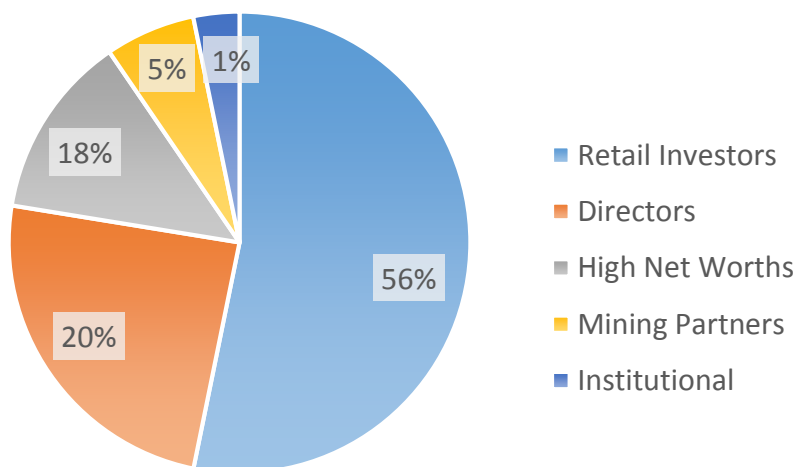
Corporate Information

Capital Structure

Market Cap. @ A\$0.23	A\$26M
Share Price *	\$0.23
Shares on Issue (post Rights Issue)	113,328,614
Options @ \$0.20/share	13,775,000
Cash @ 6 October 2016	\$5.2M

* As at 6th October 2016

Shareholders



Directors

Terry Grammer	Non-Executive Chairman
Trevor Dixon	Executive Director
Fritz Fitton	Technical Director
Joe Graziano	Director/Company Secretary

Management

Don Harper	Chief Executive Officer
------------	-------------------------



KEY TAKEAWAY –TIGHT CAPITAL STRUCTURE, EXPERIENCED TEAM, MONEY IN THE BANK

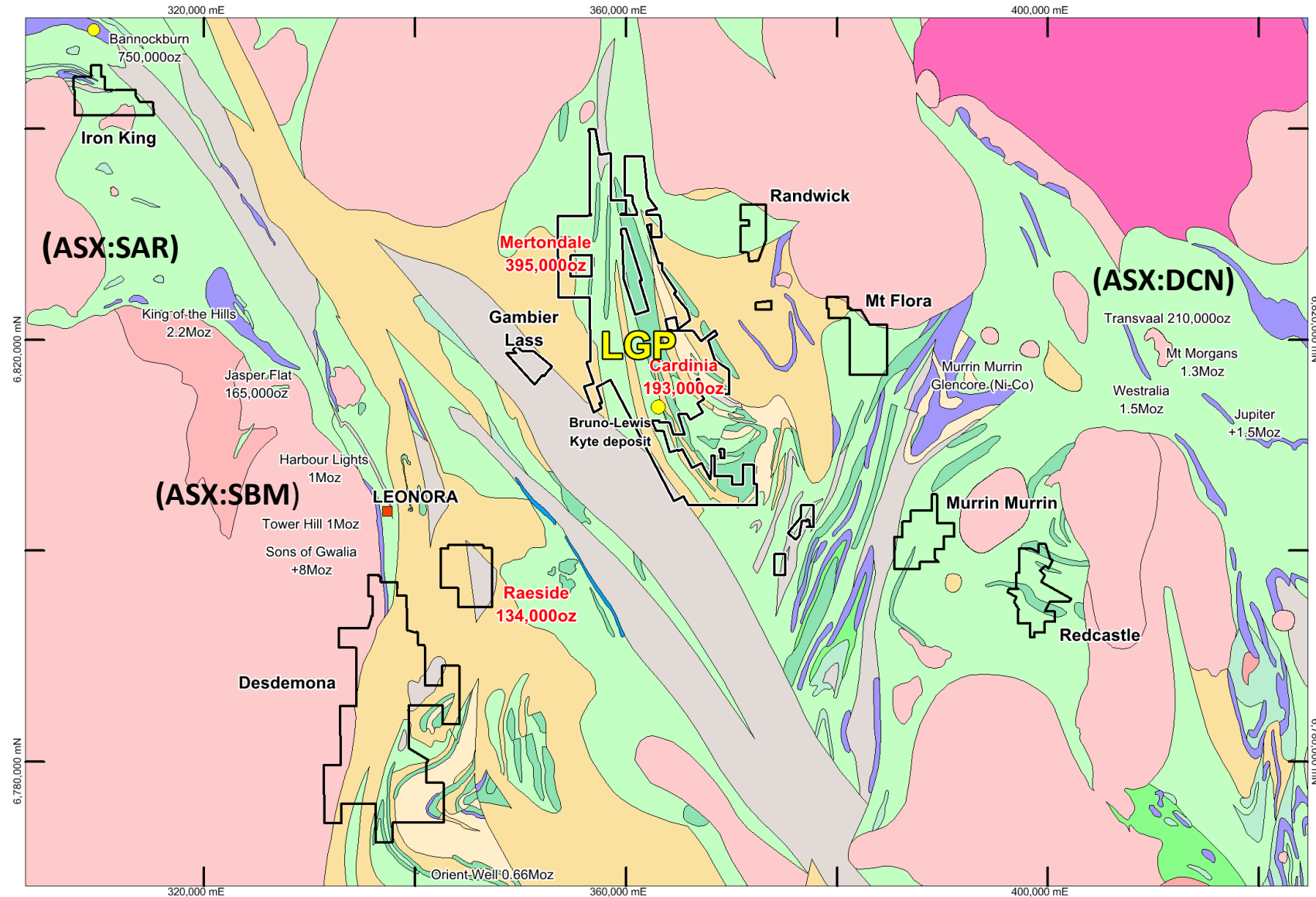
Our Flagship Leonora Gold Project (LGP)—722,300oz JORC Resource

- The LGP is located within 545sq km of Kin tenements near the township of Leonora in the North Eastern Gold Fields in W.A.
- Surrounded by big players; Dacian (ASX:DCN), Saracen (ASX:SAR), St.Barbara (ASX:SBM)
- Kin acquired the LGP in 2014 at an opportune time in the gold price cycle
- The LGP consists of Mertondale (395koz), Cardinia (193koz) and Raeside (134koz)
- Historical open pit mining occurred at Mertondale (pits 1-5), Cardinia (Bruno) and Raeside (Forgotten 4)
- In 2009 Navigator completed a **PFS** based on a 1Mtpa plant (Gold Price A\$1,250/oz – **NPV \$43M**)
- In 2016 Kin completed a **Scoping Study** based on 1Mtpa plant (Gold price A\$1,600/oz - **NPV\$81M**)



KEY TAKEAWAY –GOLD, in W.A., HISTORICAL MINING, PREVIOUS STUDIES, VIABLE PROJECT

Overview of the Leonora Gold Project – 722,000oz JORC resource



KEY TAKEAWAY – MULTIPLE +1Moz DEPOSITS IN THE DISTRICT, GREAT INFRASTRUCTURE & LOCATION

What's the Plan for our Shareholders?

Develop a Profitable, High Margin , low cost gold operation @ 45,000-55,000 oz/pa

- Generate Shareholder Returns - Pay dividends and generate capital growth: **We aim to do both**
- Take a private equity Approach – be tough on Capital Spend (Get the right sized mill, reduce upfront capex)
- Mine ounces that make money : focus on cashflow
- Achieve sustained profitability quickly...(focus on high grade ore upfront)
- Implement aggressive exploration through production cashflow– (we've got the exploration targets)
- 4 Step Approach - Complete PFS → DFS → Project Funding → ...Target Gold production within 18 months!

KEY TAKEWAY –GENERATE SHAREHOLDER RETURNS, 18 MONTHS TO GOLD PRODUCTION

Strategy to Develop the LGP: 2 Options

OPTION 1 – Convention CIL mill but EXPANDABLE to 1.1Mtpa

- Stage 1 – build a 650-750ktpa plant treating soft high grade oxide ore blended with hard high grade fresh ores – **go for high grade early**
- Go for a sensible growth strategy...
- Stage 2 - Increase the mill capacity to 1.1Mtpa with low Capital spend – Increased throughput reduces operating cost...opens up additional ounces

KEY TAKEAWAY –INITIAL LOW UPFRONT CAPEX, EARLY PAYBACK OF CAPITAL , GROWTH CAPABILITY

Strategy to Develop the LGP: 2 Options (cont.)

OPTION 2 – Convention CIL mill with Heap Leach Combination

- Build a 650-750ktpa plant treating soft high grade oxide with hard fresh ore
- Develop low cost Heap Leaching process for lower grade oxide ore near the mill
- Leverage off the mill for crushing, elution, gold room and power
- Potential to significantly increase revenue, ore reserve and mine life

The 2 options under evaluation are expected to be completed in October 2016.

KEY TAKEWAY – LOW COST OF PRODUCTION, INCREASE IN MINE LIFE AND RESERVES

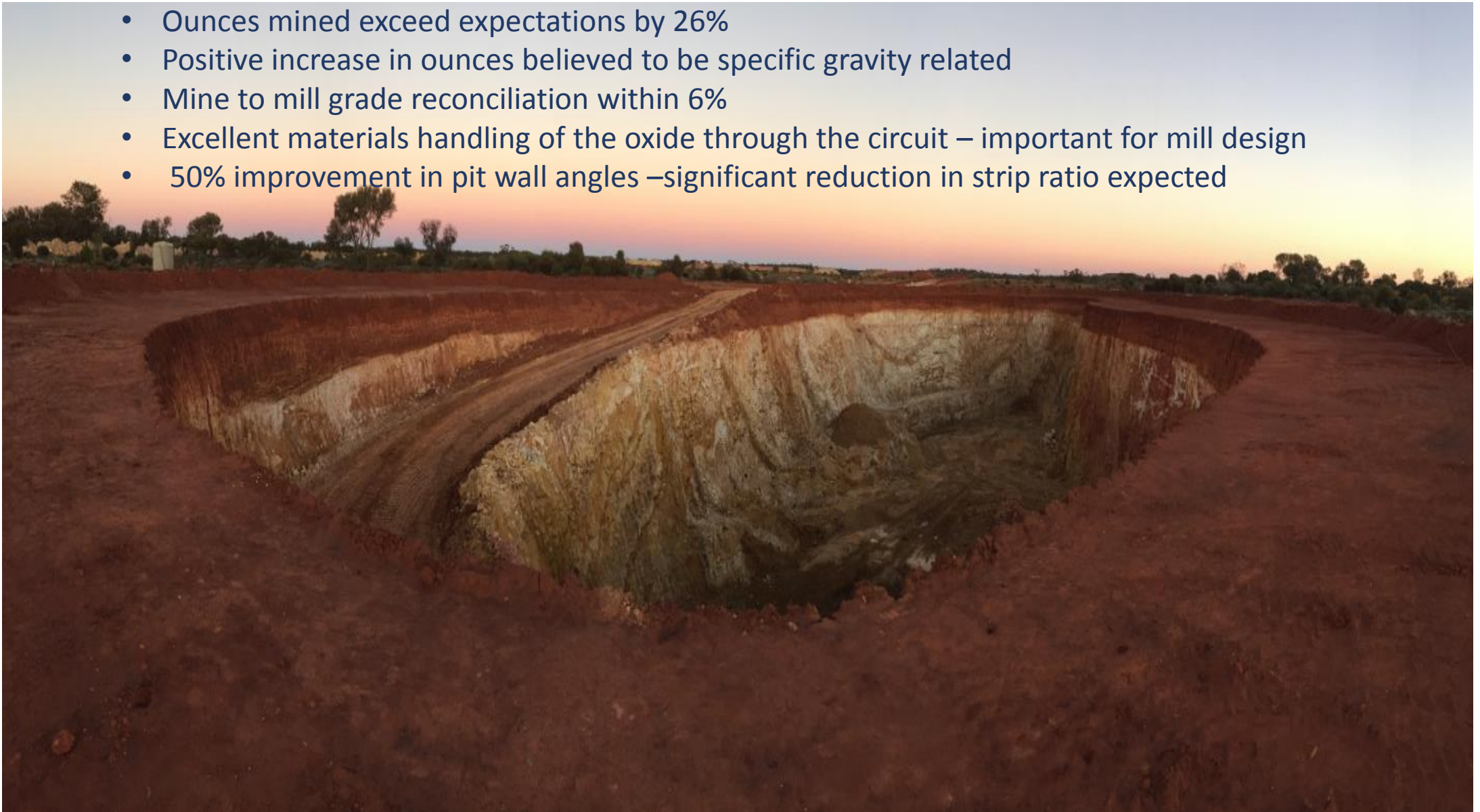
Successful Lewis Trial Mining – Enhances PFS



- The overall objective of the Lewis Trial was to determine mining and processing parameters of the oxide mill feed for the PFS.
- Lewis is part of the 134,500 Cardinia oxide resource – a major mill feed source
- In September 13,800t of ore was processed through a plant scale CIL test through a Toll Treating milling facility in Kalgoorlie.


Results of the Lewis Trial Mining – Enhances PFS

- Ounces mined exceed expectations by 26%
- Positive increase in ounces believed to be specific gravity related
- Mine to mill grade reconciliation within 6%
- Excellent materials handling of the oxide through the circuit – important for mill design
- 50% improvement in pit wall angles –significant reduction in strip ratio expected

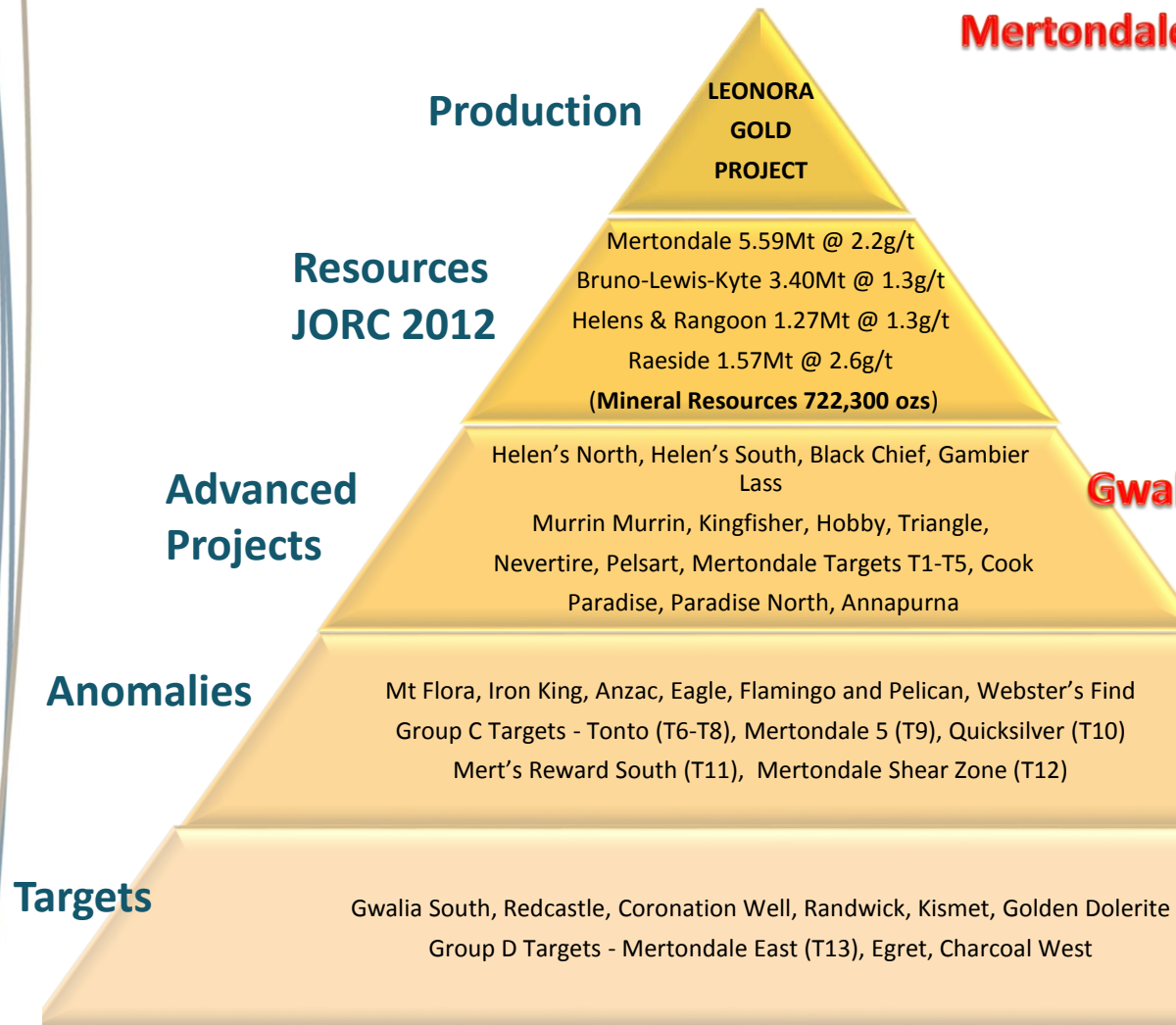


KEY TAKEAWAY – DE-RISKING, POTENTIAL INCREASE IN RESOURCE OUNCES, REDUCED STRIP RATIO

Indicative Timeline to Gold Production – Kin fully Funded to DFS

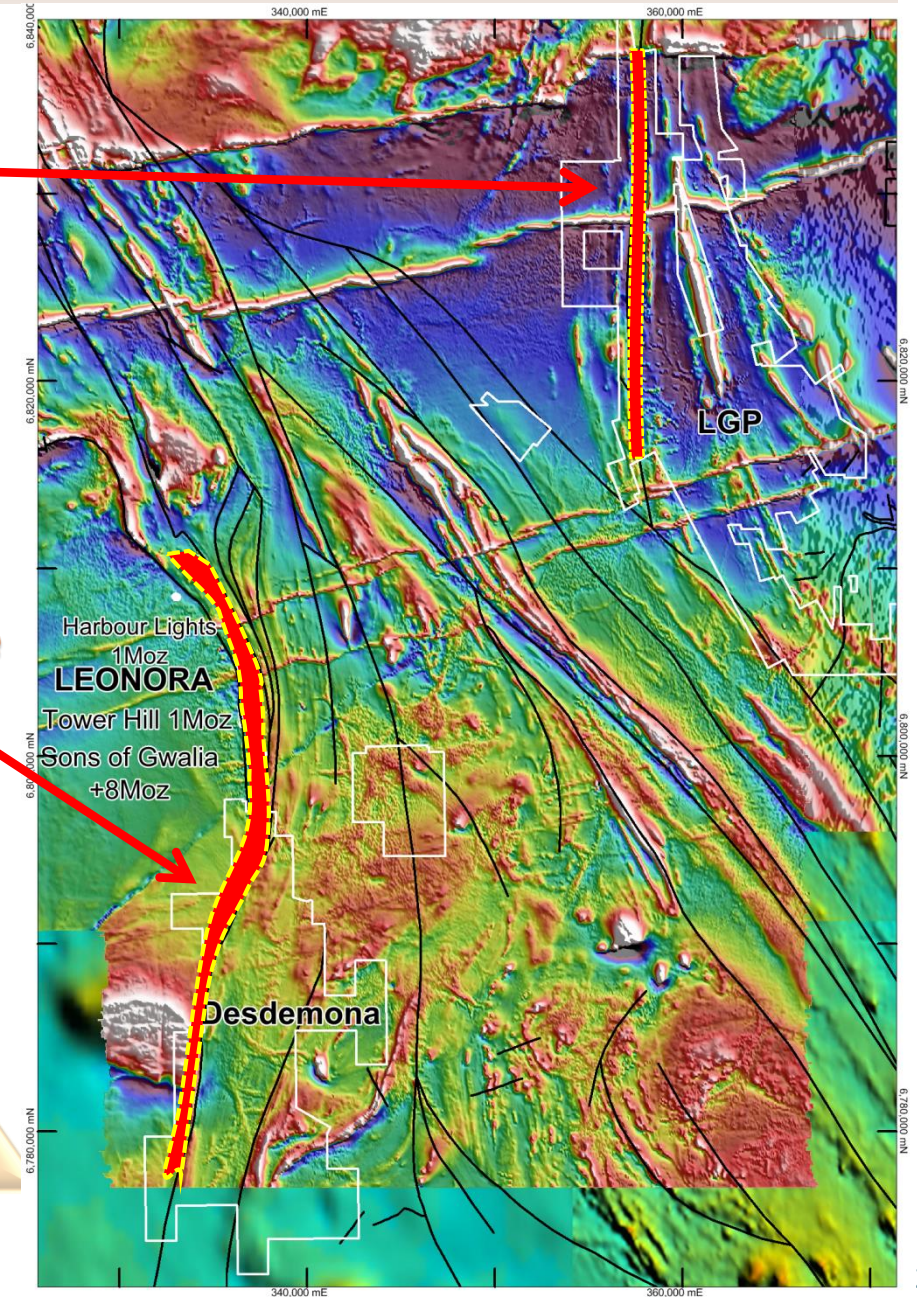
Current Schedule	2016 (1 st Half)	2016 (2 nd Half)	2017 (1 st Half)	2017 (2 nd Half)	2018 (1 st Half)
Scoping Study ✓	Complete Demonstrated a base case of standalone 1 Mtpa plant. NPV 80.9M at A\$1,600/oz ✓				
Lewis Trial Mine Operation ✓	Mining completed in August 2016. Objective to determine mining & milling parameters for PFS. ✓	Toll Treatment Gold Pour ✓			
Updated PFS	Commenced ✓	→			
DFS & Funding			→		
Approvals			→		
Mill Construction				→	
Gold Production					

EXPLORATION & RESOURCE EXPANSION OPPORTUNITIES



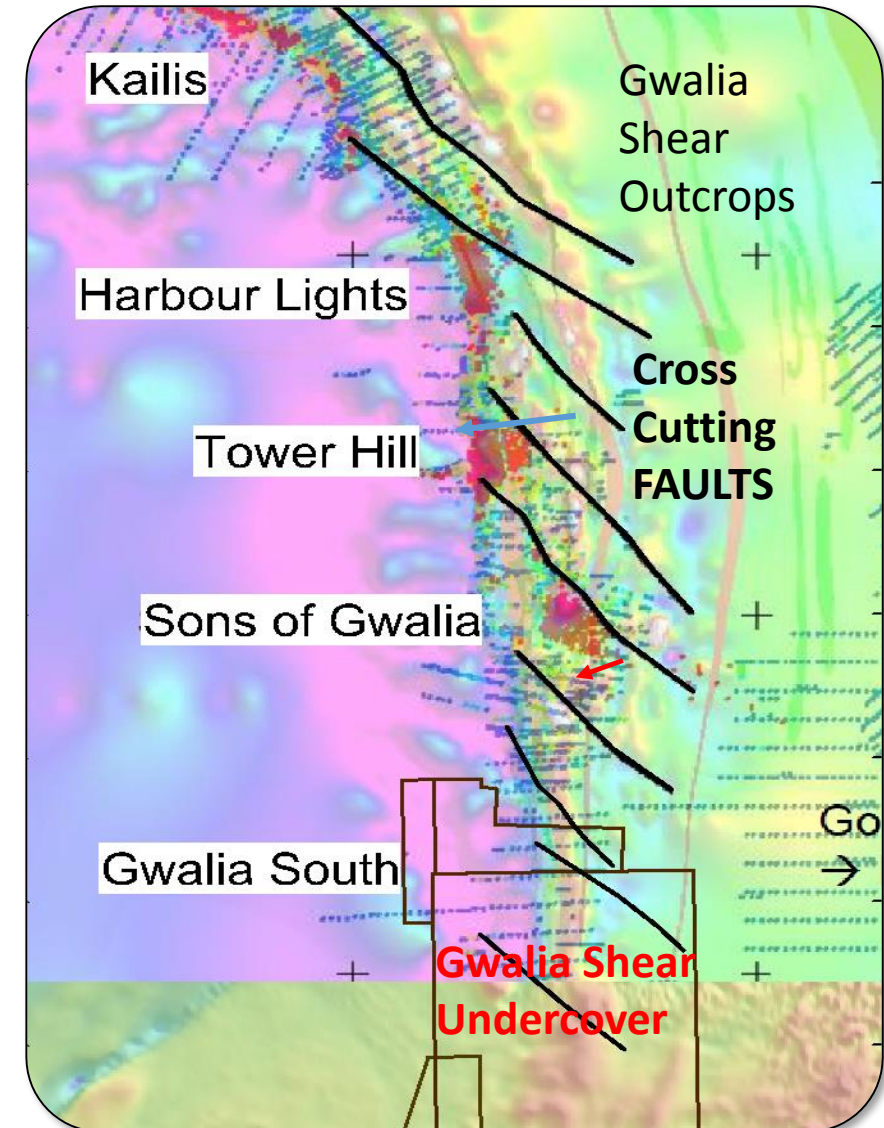
Mertondale Shear Zone

Gwalia Shear Zone



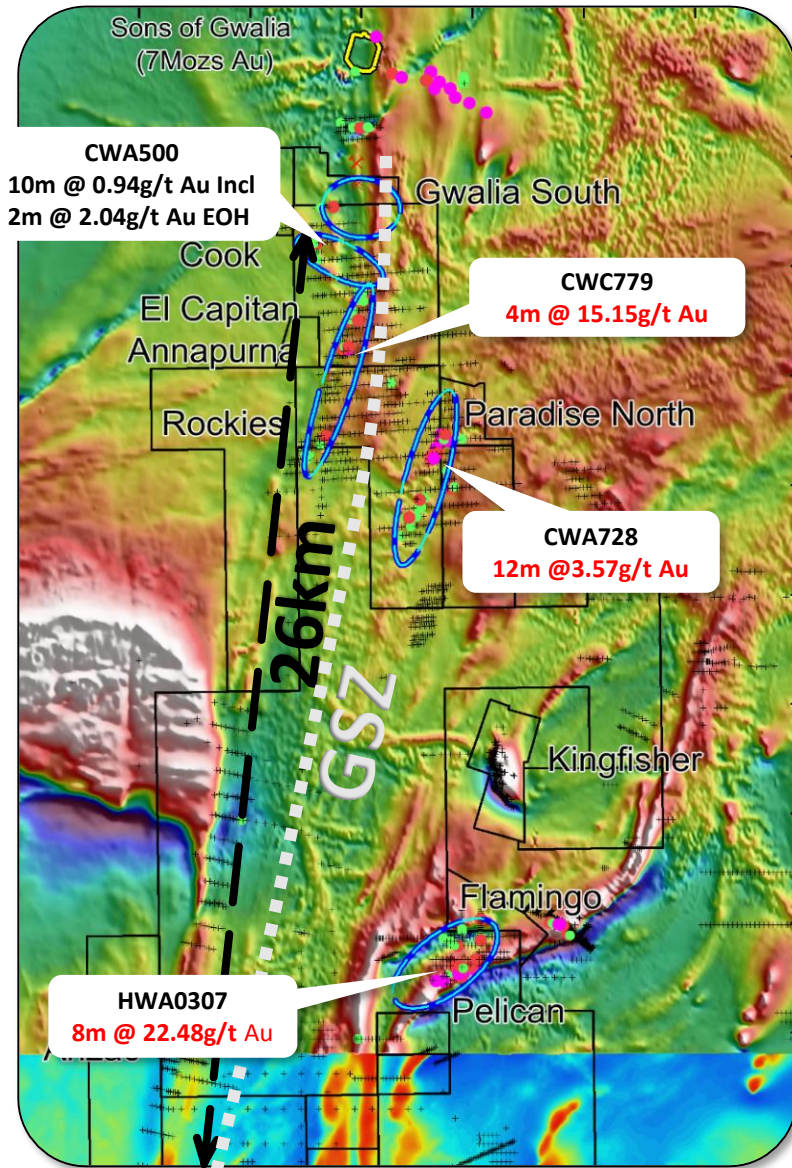
Exploration - Gwalia Shear Zone

- Gwalia Shear Zone (Mantle Tapping)
- Cross cutting Faults (the Conduit)
- Exploration to Target these Faults.
- Multiple World Class deposits found due to outcrop
- To the south of Leonora Gwalia Shear is under clay cover- hard to find by early explorers
- Untapped Exploration Opportunity

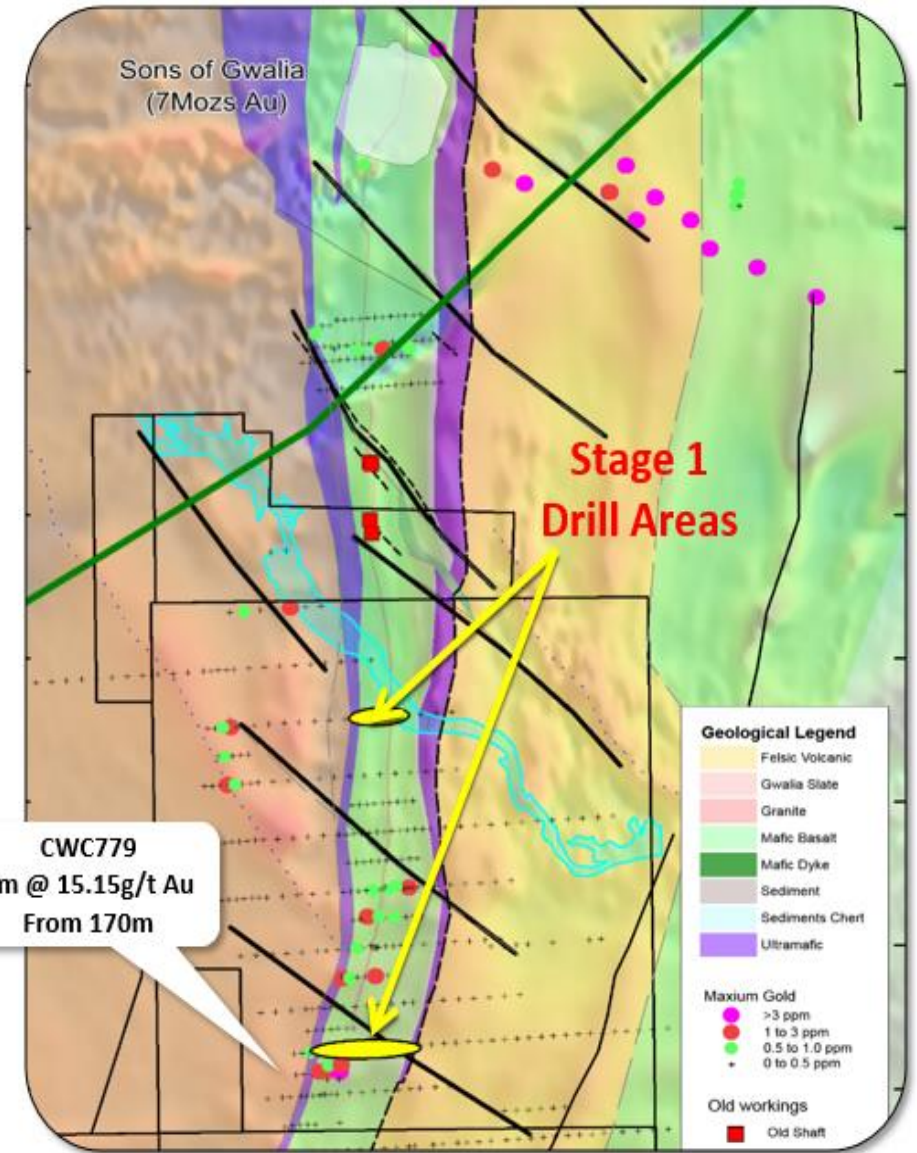


KEY TAKEWAY – PROLIFIC BELT, GWALIA SHEAR UNDERCOVER

Exploration - Unlocking the Potential along the World Class Gwalia Shear Zone

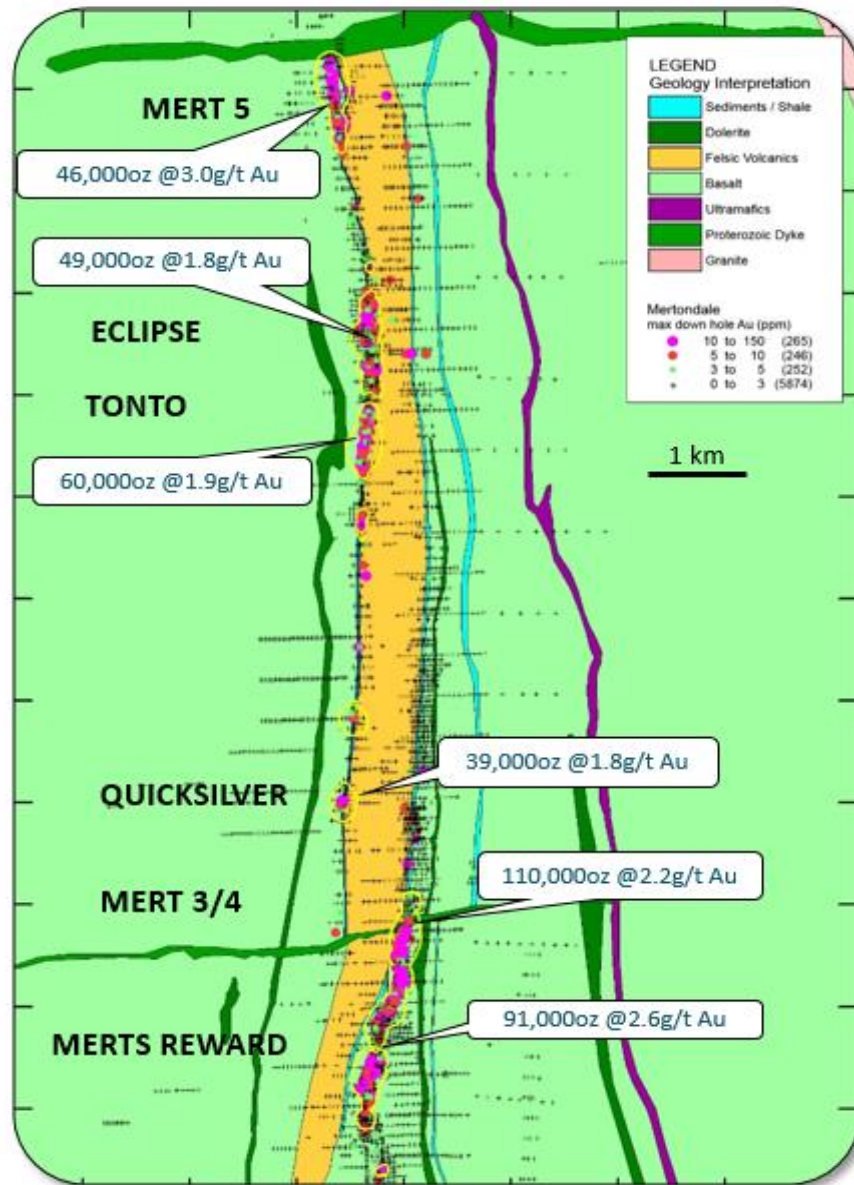


- **2.5Km south of Sons of Gwalia Mine (+8Moz)**
- 1,600m drilled to date of 3,000m RC program
- Kin Mining's Gwalia Shear Zone coverage is now **26km** strike
- **Multiple gold targets** identified along the newly acquired Gwalia South corridor
- Good hits in the Area

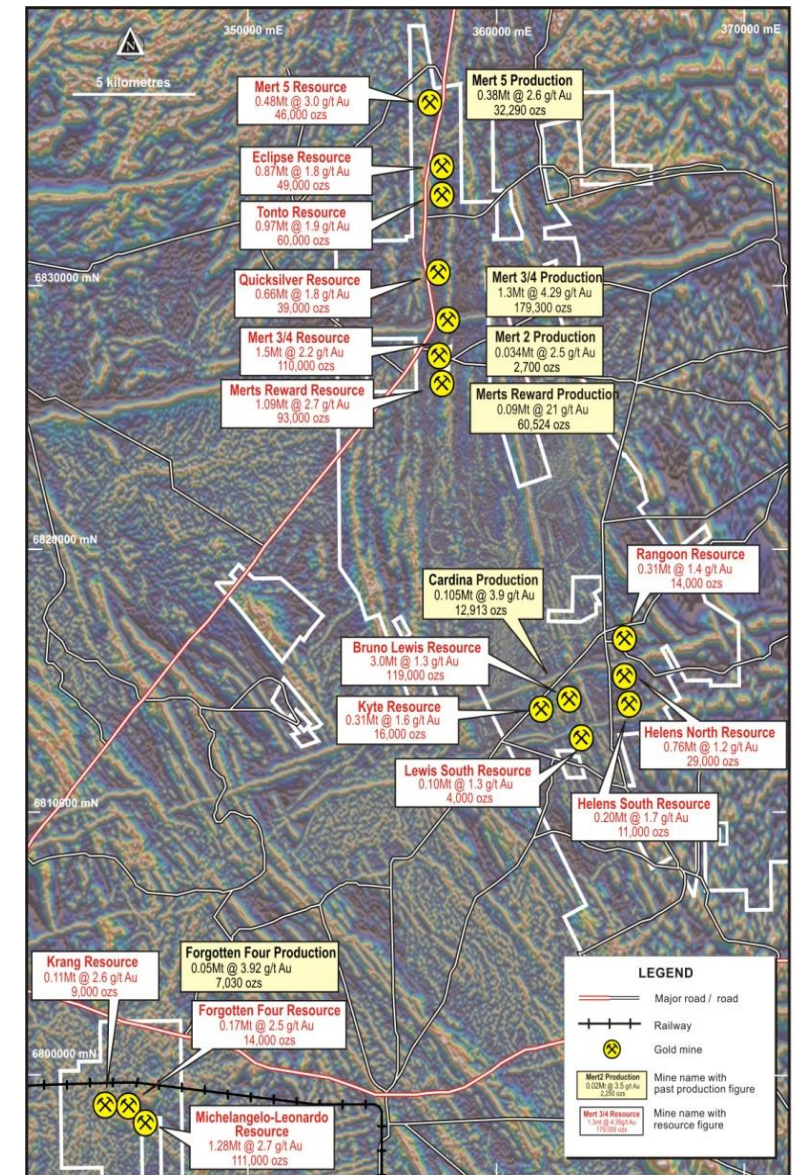


KEY TAKEAWAY – LARGE AREA...LOOKING TO CONFIRM STRUCTURE

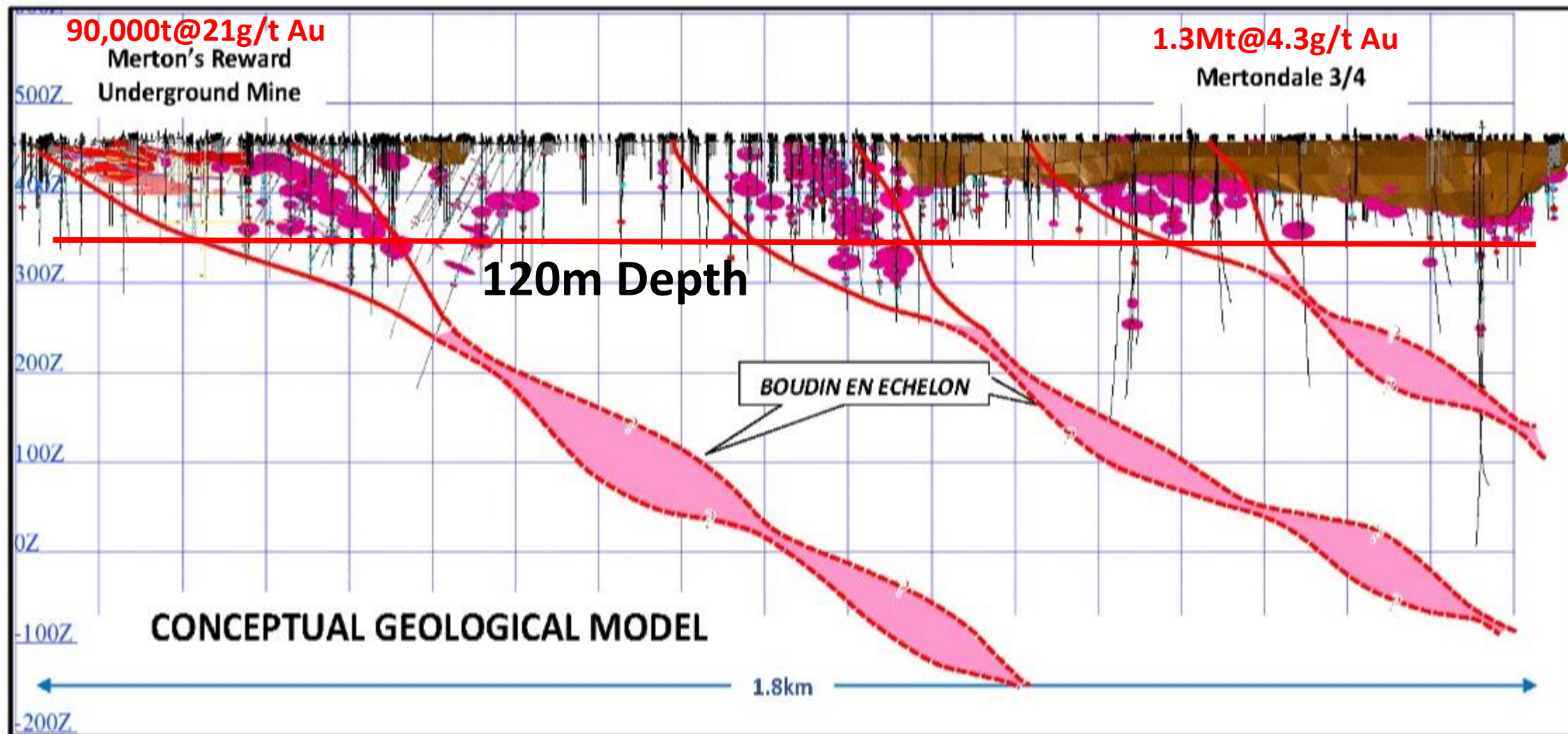
Exploration & Resource Expansion: Mertondale Shear Zone



- ~3,500m RC program complete at Mert's Reward
- Drilling confirms high grade gold lodes continue at depth
- Recent drill intersections sit outside current Resource model
- **Multiple Gold targets identified along the Mertondale Shear Zone**



Resource Expansion: Mertondale Shear Zone (Conceptual Targets)



KEY TAKEAWAY – AVERAGE DRILLING DEPTH ONLY 120m, HOT TARGET FOR ADDITIONAL OUNCES

Why Invest in Kin Mining?

- The right commodity -GOLD
- Near Term Gold producer
- Operating in Western Australia
- Excellent relationship with local Landowners
- Outstanding Exploration Opportunities
- Tight Share Register ~113.3M shares
- Cashed up after successful \$5m Rights issue
- Main Goal is to deliver Shareholder return

Thank you.