



27th April 2016

Board of Directors

Terry Grammer

Chairman

Trevor Dixon

Managing Director

Fritz Fitton

Technical Director

Joe Graziano

Non-Executive Director
and Company Secretary

Contact Details

Post

PO Box 565
Mount Hawthorn
Western Australia 6915

Office

342 Scarborough Beach Road
Osborne Park
Western Australia 6017

Phone

(08) 9242 2227

Email

info@kinmining.com.au

Website

www.kinmining.com.au

Shares on Issue:

77,512.890

Unlisted Options:

14,925.000

ASX: KIN

March Quarterly Activities Report for the period ending March 31st 2016

Kin Mining NL (ASX:KIN) is pleased to present a summary of Quarterly activities for the three months to March 31st 2016.

HIGHLIGHTS

- Evaluation of drill targets at Gwalia South complete and Phase 1 RC drill plan finalised.
- Metallurgical and leaching test work commences on Lewis RoM (Run of Mine) ore parcels.
- Commencement of Leonora Gold Project (LGP) Feasibility Study.
- Drill confirmation of the Geological Model at Mertondale.
- Evaluation of November 2015 drilling at Mertondale complete.
- Follow up deep RC drilling for T1 (Merton's Reward) and T2 (Mertondale 2) at Mertondale planned to commence in the second Quarter.
- EIS applications for Gwalia South and Mertondale submitted to DMP.

GWALIA SOUTH

Gwalia South comprises tenements P37/8504, P37/8500 and E37/1203. The prospective Gwalia Mine sequence (Gwalia slate/chert) and the Tower Hill (granite/ultramafic) contact lithologies that extend south into the Project area have been subject to an extensive exploration targeting exercise.

Target definition studies focused on multiple north-west (310°) orientated structural displacements that truncate the Leonora greenstone sequence. These faults are interpreted as the controlling structures that represent the fluid pathway plumbing system responsible for localising gold mineralisation in the Leonora district.

Drill targets and the positioning of drill holes have been finalised over accessible areas at Gwalia South (Figure 2). There are no significant gold mines along this southern section of the prospective Gwalia corridor due to lack of outcrop and ineffective exploration techniques (Figure 1).

Several high priority structural drill targets have been identified at Gwalia South currently rig access is limited to approximately 15-20% of the holding due to coverage by restricted DAA cultural and heritage area. Kin plan to investigate the available ground with an upcoming RC drill programme.

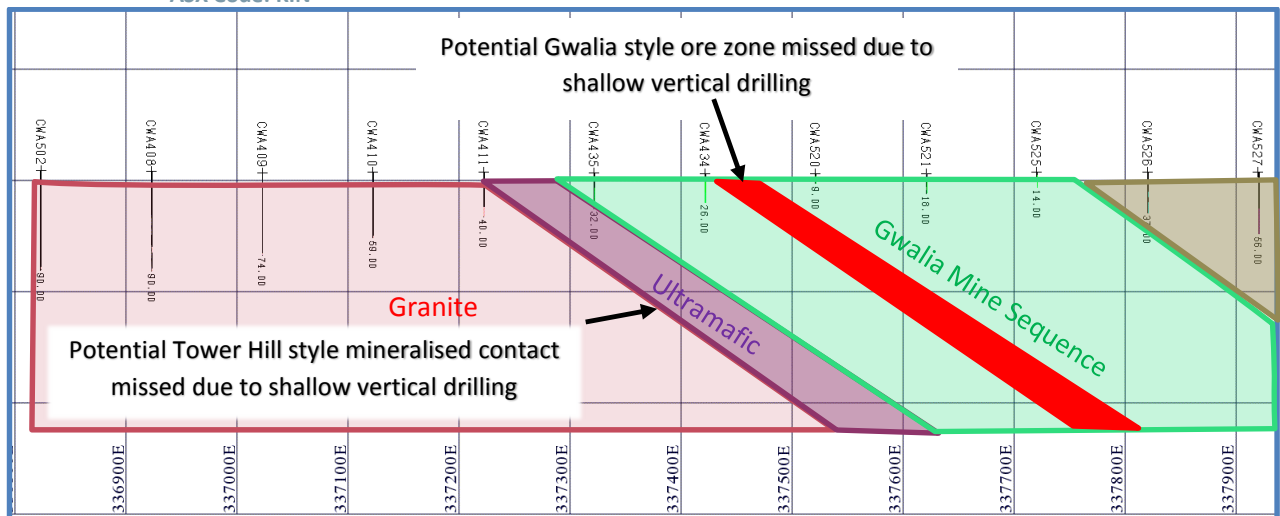


Figure 1 Typical cross section (6795600mN) highlighting the shallow poorly targeted historical drilling across the prospective ultramafic and mafic volcanic sequence that host the Sons of Gwalia mine.

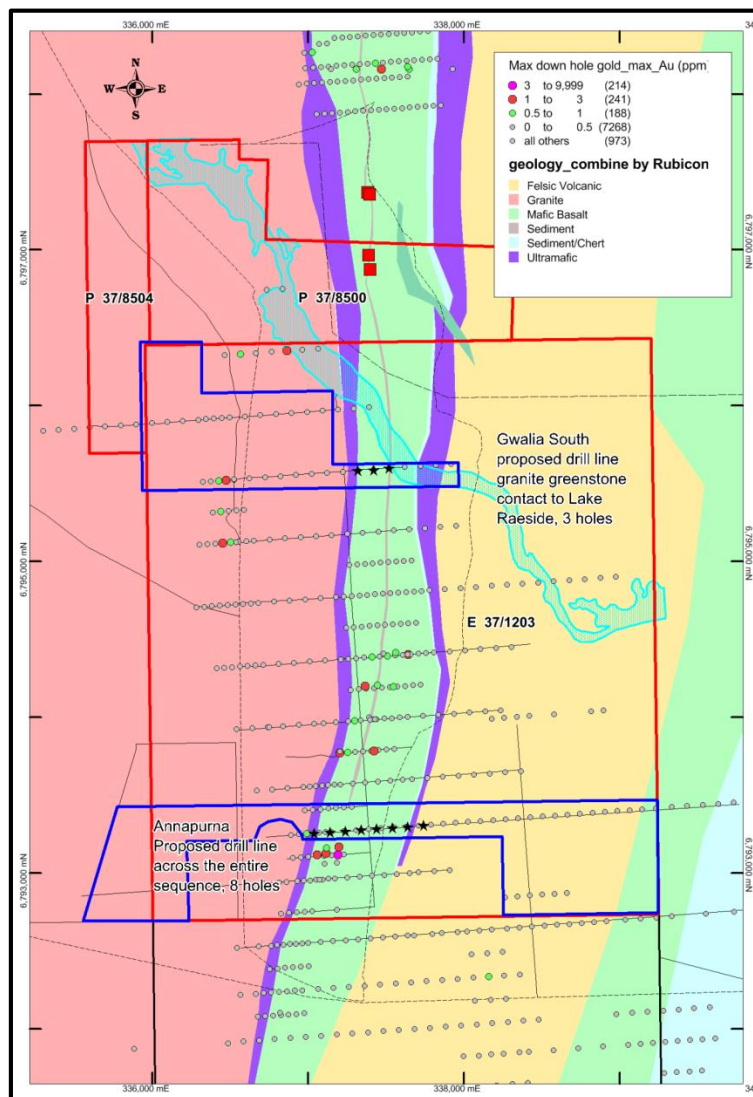


Figure 2 Geological plan displaying RC drill hole locations and the mine sequence extensions cutting through E37/1203. Blue outline indicates accessible areas. Gwalia South target approximates to section 6795600mN

Both Gwalia and Tower Hill style targets have been selected as drill targets for this drill campaign.

A Reverse Circulation (RC) drilling programme has been designed, nominally 1,600 metres, consisting of eleven RC holes (-60°/265°) over two drill traverses approximately 2.3km apart drilling to depths of +150 metres.

Historic drilling failed to intersect the north-west faults and existing shallow holes have not been drilled completely through the prospective lithological contacts, the greenstone sequence remains prospective, inadequately tested along strike and untested at depth (Figure 1).

An EIS Government co-funded exploration drilling application to aid in drill costs for the upcoming drill programme has been submitted to DMP with an outcome expected next Quarter.

LEWIS TRIAL OPEN PIT

Progress continues at the Bruno-Lewis supergene deposit with finalisation of the geotechnical assessment and completion of five test pits within the confines of the planned Lewis open cut to secure Run of Mine (RoM) ore for leaching and metallurgical testwork.

The open pit mine area has been marked out, survey control points identified and clearing of the mining area (Lewis East pit) will commence this Quarter.

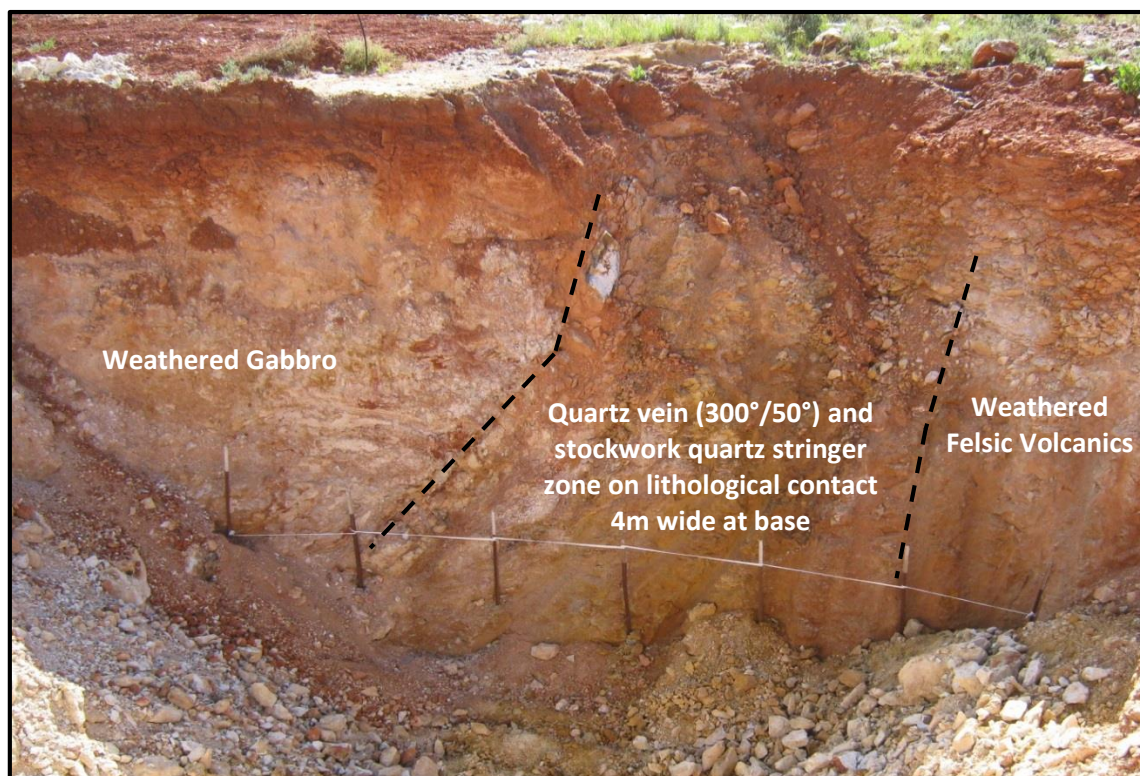


Figure 3 Cross section view of NW face of test pit at Lewis West; pegs are spaced at one metre intervals, pit is five meters deep, one metre channel sample results are pending

Small scale vat leach test work has commenced and percolation results received to date are positive. The Lewis trial mining and leaching operation is viewed as a Research and Development project to assess the opportunity for a low start-up cost open cut mining exercise that will effectively test a portion of the larger Bruno-Lewis-Kyte supergene resource (3,398,000t @ 1.3g/t Au for 139,400 oz) and the economic viability of extracting and processing the ore.

The Cardinia Resource is an integral asset of the overall JORC 2012 Gold Resources of the Leonora Gold Project 11.825Mt @ 1.9 g/t Au (722,300 oz Au).

FEASIBILITY STUDY

Kin Mining has engaged Independent consultants (Auralia Mining Consulting), as part of the planned Feasibility Study, on the Leonora Gold Project. Auralia have reviewed the previous company's PFS and deemed it to be within industry standards of the time.

A scoping study, based on Auralia's findings using up to date mining costs and current gold price, is due within the second Quarter. The scoping study is designed to inform the market of the viability of the LGP in preparation for a comprehensive Feasibility Study.

Analysis to date is encouraging and Kin are on track to complete the LGP feasibility study in 2016.

TENEMENT MAINTAINANCE

Several tenements at Murrin Murrin (P39/5176-5180) have been granted an extension of term for four years and two Exploration Licenses at Desdemona (E40/285 and E40/283) have been extended for an additional five years.

Conversion of four tenements located between the Bruno-Lewis and Helens-Rangoon deposits at Cardinia (P37/7264, P37/7891, P37/7893 and P37/7274) have been submitted to the DMP and recommended for approval for conversion into two contiguous Mining Leases.

Statutory reporting requirements to DMP have been lodged.

HIGH GRADE INTERSEPTS AT MERTONDALE

Evaluation of the maiden RC drill programme conducted in the previous Quarter at Mertondale (T1 and T2 targets) has resulted in defining NNE extensions to the Merton's Reward ore body (1,080,000t @ 2.2g/t Au) along strike and at depth. Drilling beneath the Mertondale 2 pit also intersected extensions to the mineralised lode. Both target areas remain open at depth and along strike.

The drill results are now incorporated into the resource model and additional drill targets have been defined. The recent drill programme confirmed the geological model and confirmed the extension to the intershear lodes, the mineralised Mertondale Shear Zone at Mertondale remains open. An EIS application to drill a deep diamond drill hole targeting high grade lode extensions at depth has been submitted to DMP. No deep drilling has taken place beneath the historic underground workings.

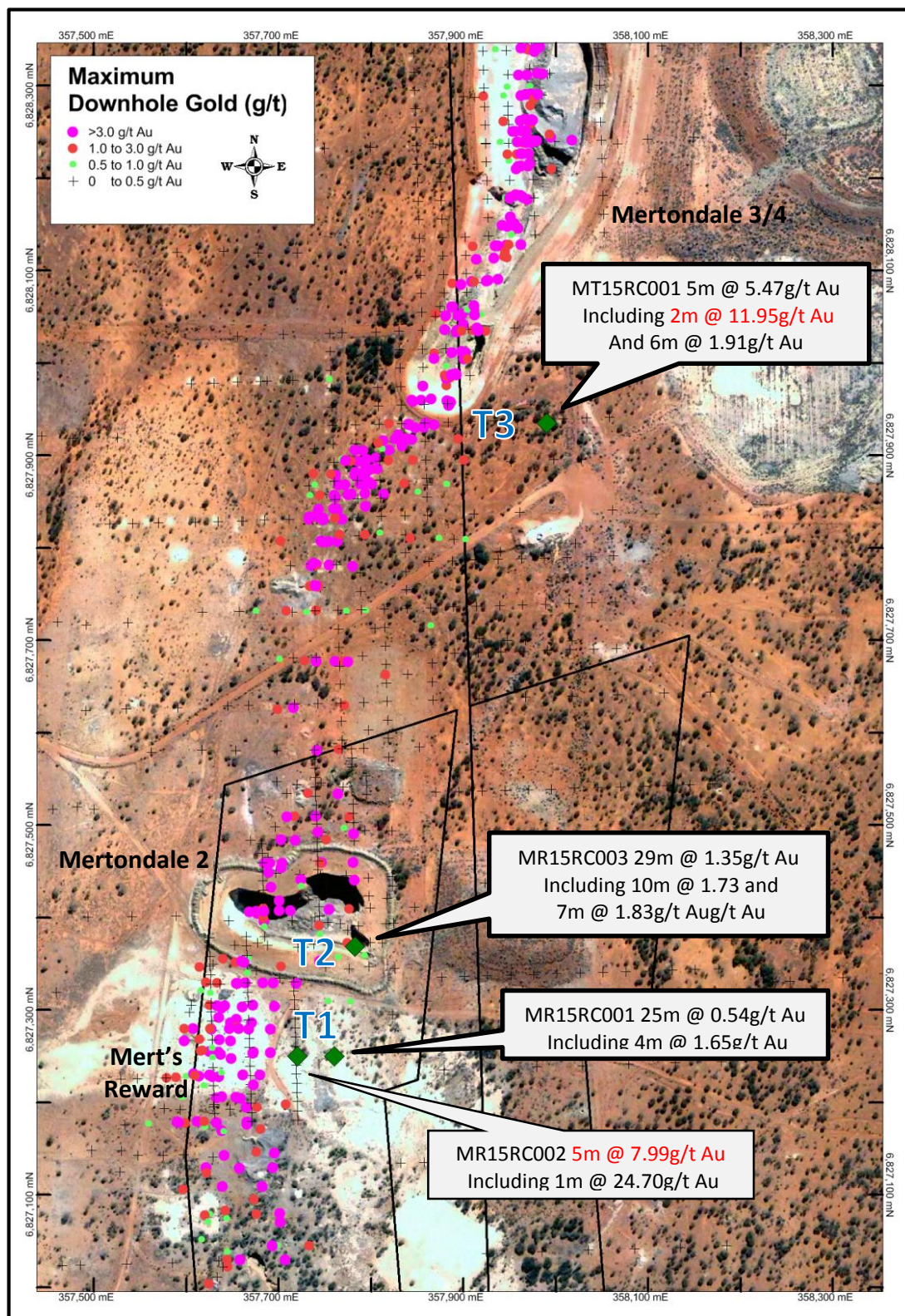


Figure 4 Plan view of the Mertondale area with Merton's Reward, Mertondale 2 and Mertondale 3/4 Targets (T1, T2 & T3). Displaying the significant RC intersections returned in November 2015 with maximum gold values plotted against historic drilling. Proposed May drilling will focus on the T1 and T2 target areas.

A 3,500m RC drill programme has been designed to test the strike extensions of the identified mineralisation and test the possibility of a duplication of the lode system at depth. Drill results are expected in the next Quarter.

Significant RC intersections reported previously include:

- 10m @ 4.16g/t Au from 59m including 5m @ 7.99g/t Au which included **1m @ 24.7g/t Au**.
- 25m @ 0.54g/t Au from 166m including 4m @ 1.65g/t Au.
- 29m @ 1.35g/t Au from 155m including 10m @ 1.73g/t Au and 7m @ 1.83g/t Au.
- 10m @ 2.97g/t Au from 205m including 5m @ 5.47g/t Au which included **2m @ 11.94g/t Au**.
- 4m @ 2.36g/t Au from 126m including 1m @ 6.56g/t Au.

Merton's Reward was mined at the turn of last century producing 60,524 oz Au at an average grade of 21g/t Au, making it one of the richest underground gold mines in the Eastern Goldfields. Evaluations of historical records (DMP reports 1899-1905) have provided a unique insight into the mining status at the time and details about the productive lodes from the original underground mining operation.

The majority of historical drilling has focused on the upper half of the mine. The mineralised system has only been partially tested at depth and drill holes >150m deep are rare, there is limited drilling below this depth and potential remains to define extensions to the gold bearing lodes below this level.

Competent Persons Statement

The information contained in this report relates to information compiled or reviewed by Mr. Paul Maher who is a member of the (AusIMM) and Mr. Simon Buswell-Smith who is a Member of the Australian Institute of Geoscientists (MAIG), both are employees of the company and fairly represent this information. Mr. Maher and Mr. Buswell-Smith have sufficient experience which is relevant to the styles of mineralisation and the types of deposit under consideration, and to the activities undertaken to qualify as a Competent Person as defined in the 2012 edition of the "JORC Australian code for reporting of Exploration Results, Mineral Resources and Ore Reserves". Both consent to the inclusion in this report of the matters based on information in the form and context in which it appears.

Forward Looking Statements

Certain information in this document refers to the intentions of Kin Mining NL, but these are not intended to be forecasts, forward looking statements or statements about future matters for the purposes of the Corporations Act or any other applicable law. The occurrence of events in the future are subject to risks, uncertainties and other factors that may cause Kin Mining NL's actual results, performance or achievements to differ from those referred to in this announcement. Accordingly, Kin Mining NL, its directors, officers, employees and agents do not give any assurance or guarantee that the occurrence of the events referred to in this announcement will actually occur as contemplated.

KIN MINING NL TENEMENT SCHEDULE
TENEMENT INFORMATION AS REQUIRED BY LISTING RULE 5.3.3

DESDEMONA

20 kms South of Leonora Townsite

Tenement ID	Ownership at end of Quarter	Change During Quarter
E37/1152	100%	
E37/1156	100%	
E37/1201	100%	
E37/1203	100%	
P37/8500	100%	
P37/8504	100%	
E40/283	100%	extension applied
E40/285	100%	
E40/323	100%	
M40/330	100%	
P37/8350	100%	
P37/8390	100%	
P40/1263	100%	
P40/1283	100%	
P40/1284	100%	
P40/1285	100%	
P40/1286	100%	
P40/1287	100%	

MURRIN MURRIN

50 kms East of Leonora

Tenement ID	Ownership at end of Quarter	Change During Quarter
M39/279	66.66%	
P39/4913	100%	
P39/4914	100%	
P39/4915	100%	
P39/4916	100%	
P39/4980	100%	
P39/5112	100%	
P39/5113	100%	
P39/5164	100%	
P39/5165	100%	
P39/5176	100%	extension applied
P39/5177	100%	extension applied
P39/5178	100%	extension applied
P39/5179	100%	extension applied
P39/5180	100%	extension applied

MT FLORA

50 kms East North East of Leonora

Tenement ID	Ownership at end of Quarter	Change During Quarter
P39/4617	100%	
P39/4618	100%	
P39/4619	100%	
P39/4620	100%	
P39/4621	100%	
P39/4912	100%	
P39/4960	100%	
P39/4961	100%	
P39/5181	100%	
P39/5182	100%	
P39/5183	100%	
P39/5185	100%	
P39/5463	100%	

IRON KING / VICTORY

45 kms North North West of Leonora

Tenement ID	Ownership at end of Quarter	Change During Quarter
P37/7175	100%	
P37/7176	100%	
P37/7177	100%	
P37/7194	100%	
P37/7195	100%	
P37/7196	100%	
P37/7197	100%	
P37/7198	100%	
P37/8455	100%	
P37/8458	100%	
P37/8459	100%	
P37/8460	100%	
P37/8461	100%	

REDCASTLE

65 kms South West of Laverton

Tenement ID	Ownership at end of Quarter	Change During Quarter
P39/4550	100%	
P39/4593	100%	
P39/4834	100%	
P39/4839	100%	
P39/5097	100%	
P39/5098	100%	
P39/5099	100%	
P39/5100	100%	
P39/5101	100%	
P39/5102	100%	
P39/5103	100%	
P39/5105	100%	
P39/5267	100%	

RANDWICK

45 kms North East of Leonora

Tenement ID	Ownership at end of Quarter	Change During Quarter
P37/7283	100%	
P37/7284	100%	
P37/7806	100%	
P37/7995	100%	
P37/7996	100%	
P37/7997	100%	
P37/7998	100%	
P37/7999	100%	
P37/8000	100%	
P37/8001	100%	

MERTONDALE

35 kms East & North East of Leonora Townsite

Tenement ID	Ownership at end of Quarter	Change During Quarter
P37/7171	100%	

NAVIGATOR MINING PTY LTD TENEMENT SCHEDULE
(a wholly owned subsidiary of Kin Mining NL)
TENEMENT INFORMATION AS REQUIRED BY LISTING RULE 5.3.3

CARDINIA / MERTONDALE		
35 kms East & North East of Leonora Townsite		
Tenement ID	Ownership at end of Quarter	Change During Quarter
L37/106	100%	
L37/127	100%	
L37/128	100%	
L37/195	100%	
L37/196	100%	
L37/65	100%	
M37/1284	100%	
M37/223	100%	
M37/227	100%	
M37/231	100%	
M37/232	100%	
M37/233	100%	
M37/277	100%	
M37/299	100%	
M37/300	100%	
M37/316	100%	
M37/317	100%	
M37/422	100%	
M37/428	100%	
M37/487	100%	
M37/594	100%	
M37/646	80%	
M37/720	100%	
M37/81	100%	
M37/82	100%	
M37/86	100%	
M37/88	100%	
P37/7241	100%	
P37/7242	100%	
P37/7243	100%	
P37/7244	100%	
P37/7245	100%	
P37/7246	100%	
P37/7247	100%	
P37/7248	100%	
P37/7249	100%	
P37/7250	100%	
P37/7251	100%	
P37/7252	100%	
P37/7253	100%	
P37/7254	100%	
P37/7255	100%	
P37/7256	100%	
P37/7257	100%	
P37/7258	100%	
P37/7259	100%	
P37/7260	100%	
P37/7261	100%	
P37/7262	100%	

CARDINIA / MERTONDALE		
35 kms East & North East of Leonora Townsite		
Tenement ID	Ownership at end of Quarter	Change During Quarter
P37/7665	100%	
P37/7666	100%	
P37/7667	100%	
P37/7668	100%	
P37/7669	100%	
P37/7670	100%	
P37/7671	100%	
P37/7672	100%	
P37/7673	100%	
P37/7674	100%	
P37/7675	100%	
P37/7697	100%	
P37/7698	100%	
P37/7699	100%	
P37/7700	100%	
P37/7701	100%	
P37/7702	100%	
P37/7703	100%	
P37/7704	100%	
P37/7705	100%	
P37/7706	100%	
P37/7707	100%	
P37/7708	100%	
P37/7711	100%	
P37/7712	100%	
P37/7713	100%	
P37/7714	100%	
P37/7715	100%	
P37/7716	100%	
P37/7736	100%	
P37/7737	100%	
P37/7738	100%	
P37/7756	100%	
P37/7757	100%	
P37/7758	100%	
P37/7759	100%	
P37/7760	100%	
P37/7761	100%	
P37/7805	100%	
P37/7891	100%	Conversion MLA37/1303
P37/7892	100%	
P37/7893	100%	Conversion MLA37/1303
P37/7953	100%	
P37/7954	100%	
P37/7969	100%	
P37/7970	100%	
P37/7971	100%	
P37/7972	100%	
P37/7973	100%	

CARDINIA / MERTONDAL

35 kms East & North East of Leonora Townsite

Tenement ID	Ownership at end of Quarter	Change During Quarter
P37/7263	100%	
P37/7264	100%	Conversion MLA37/1303
P37/7265	100%	
P37/7266	100%	
P37/7267	100%	
P37/7268	100%	
P37/7269	100%	
P37/7270	100%	
P37/7271	100%	
P37/7272	100%	
P37/7273	100%	
P37/7274	80%	Conversion MLA37/1304
P37/7275	80%	
P37/7276	80%	
P37/7277	100%	
P37/7655	100%	
P37/7656	100%	
P37/7657	100%	
P37/7658	100%	
P37/7659	100%	
P37/7660	100%	
P37/7661	100%	
P37/7662	100%	
P37/7663	100%	
P37/7664	100%	

CARDINIA / MERTONDAL

35 kms East & North East of Leonora Townsite

Tenement ID	Ownership at end of Quarter	Change During Quarter
P37/7974	100%	
P37/7975	100%	
P37/7976	100%	
P37/7977	100%	
P37/7978	100%	
P37/7979	100%	
P37/8007	100%	
P37/8057	0%	Expired 29/03/2016
P37/8196	100%	
P37/8199	100%	
P37/8209	100%	
P37/8210	100%	
M37/1303	0%	Tenement Application
M37/1304	0%	Tenement Application

RAESIDE

8 kms East of Leonora Townsite

Tenement ID	Ownership at end of Quarter	Change During Quarter
M37/1298	100%	
E37/1103	100%	
E37/868	100%	
L37/125	100%	
L37/77	100%	