

ASX Announcement

21 September 2022

CARDINIA PROJECT GOLD RESOURCE HITS 1.4Moz AS EXPLORATION CONTINUES TO DELIVER

Resource grows further with the addition of 132koz at 1.3g/t, with a 95koz contribution at 1.3g/t from the Rangoon deposit within the emerging Eastern Corridor

Highlights:

- Updated Mineral Resource Estimate (MRE) completed for the Cardinia Gold Project in the Leonora region of WA: 34.5Mt at 1.27g/t Au for 1.41Moz of contained gold.
- Represents an increase of 132koz, or 10%, in contained ounces from the last MRE update published in September 2021.

Cardinia Eastern Corridor:

- Updated MRE for the Rangoon deposit of 2.29Mt at 1.29g/t Au for 94koz of contained gold, an increase of 62koz from the previous estimate due to successful drilling programs completed over the past year.
- Eastern Corridor deposits now total 7.2Mt at 1.47g/t for 338koz of contained gold.

Cardinia Western Corridor:

- Updated MRE for the Bruno-Lewis Prospect of 12.1Mt @ 1.00g/t Au for 390koz of contained gold.
- Western Corridor deposits now total 12.5Mt at 1.02g/t for 410koz of gold.

Mertondale and Raeside:

- Mertondale deposits MRE: 11.7Mt at 1.22g/t for 457koz of gold.
- Raeside deposits MRE: 3.1Mt at 2.04g/t for 202koz of gold.

Kin Mining NL (ASX: KIN or “the Company”) is pleased to advise that its exploration-driven growth strategy for its flagship 100%-owned **Cardinia Gold Project**, located near Leonora in Western Australia, is continuing to deliver strong results with the announcement of an updated project-wide Mineral Resource Estimate (MRE).

ASX Code: KIN

Shares on issue: 1,048.5 million

Market Capitalisation: \$78.6 million (at 7.5cps)

Cash: \$17.3 million (30 June 2022 plus raised funds)

Kin Mining NL

342 Scarborough Beach Road

Osborne Park WA 6017

P: +61 9 9242 2227

E info@kinmining.com.au

kinmining.com.au

The updated September 2022 MRE has seen overall contained ounces increase by 10% to 1.41 million ounces (34.5Mt at 1.27g/t Au), reflecting the success of the strategic drilling programs undertaken by the Company over the past year, particularly within the under-explored Eastern Corridor.

The new drilling around the Rangoon deposit within the Eastern Corridor has added an additional 62koz of Mineral Resource. The MRE for all optimised resources was also extended into underground mining positions below the open pit optimisation shells. At a 2.0g/t cut-off grade, this has added an additional 22koz, increasing the previous MRE announced on 23 September 2021 by a total of 3.36Mt at 1.22g/t for an additional 132koz of gold.

The project wide MRE update includes reoptimized pit shells for all existing models using standardised parameters and software, a gold price of A\$2,600 and 2019 Pre-Feasibility Study (PFS) for the CGP operating cost assumptions. All Open Pit Mineral Resource Estimates are reported within optimised shells using the same criteria for recovery and geotechnical parameters as established in the 2019 Pre-Feasibility Study (PFS) for the CGP (see Table 1 Section 3 for the data used in the optimisations).

Kin Mining Managing Director Andrew Munckton said the continued growth in the Company's resource base at Cardinia reflected the success of its strategic exploration approach while marking another important step towards unlocking the value of the Project by converting exploration potential into JORC Mineral Resources.

"Once again, we have delivered solid growth in the Cardinia Gold Project Resource, with the addition of high-quality ounces at good grade along the Eastern Corridor while continuing to consolidate and expand our resource positions along the Western Corridor.

"The latest MRE delivers a 10 per cent increase in overall contained ounces while also increasing the size of the higher quality Measured and Indicated categories and ensuring that the project-wide MRE is based on the latest gold price and operating cost assumptions.

"We are particularly pleased to have delivered a 95koz MRE for the recently discovered Rangoon deposit, where we announced strong drilling results over the past 12 months and see outstanding potential for further growth. The Eastern Corridor, where the Rangoon deposit is located, was the major focus of our exploration drilling efforts of the last 12 months and now boasts an impressive resource base totalling 7.2Mt at 1.47g/t for 338koz.

"For the first time, Underground Mineral Resources have been estimated for mineralisation above a 2.0g/t Au cut-off grade below the open pit optimisation shells which constrain the MRE at all the deposits. While relatively small at this stage, these deeper and higher-grade Mineral Resources are likely to grow as drilling advances at depth.

"In addition, the Measured and Indicated portion of the MRE continues to grow with the higher confidence portion now totalling 18.6Mt at 1.4g/t for 834koz.

"We also have a very strong pipeline of deposits that are yet to be estimated at the Mineral Resource level in the latest MRE, including the Helens East prospect in the Eastern Corridor and the Pegasus and Eagle-Crow prospects in the Western Corridor. Further programs of work are proposed for FY22/23 to advance these exciting prospects to the resource stage."

Cardinia Gold Project: Mineral Resources: September 2022														
Project Area	Resource Gold Price (AUD)	Lower Cut off (g/t Au)	Measured Resources			Indicated Resources			Inferred Resources			Total Resources		
			Tonnes (Kt)	Au (g/t Au)	Au (k Oz)	Tonnes (Kt)	Au (g/t Au)	Au (k Oz)	Tonnes (Kt)	Au (g/t Au)	Au (k Oz)	Tonnes (Kt)	Au (g/t Au)	Au (k Oz)
Mertondale														
Open Pit	\$ 2,600	0.4				4,625	1.6	236.5	7,039	1.0	219.1	11,664	1.2	455.6
Underground		2.0				7	2.4	0.6	9	2.7	0.8	17	2.6	1.4
Subtotal Mertondale						4,632	1.6	237.1	7,048	1.0	219.9	11,680	1.2	457.0
Cardinia														
Open Pit	\$ 2,600	0.4	769	1.2	30.8	11,020	1.2	427.9	7,696	1.1	270.7	19,485	1.2	729.4
Underground		2.2	2	3.0	0.2	6	2.7	0.5	207	2.7	17.8	213	2.7	18.5
Subtotal Cardinia			772	1.3	31.0	11,025	1.2	428.4	7,902	1.1	288.5	19,697	1.2	747.9
Raeside														
Open Pit	\$ 2,600	0.4				2,059	2.0	132.6	866	2.0	56.8	2,925	2.0	189.4
Underground		2.0				64	2.6	5.3	93	2.5	7.4	156	2.5	12.6
Subtotal Raeside						2,123	2.0	137.9	959	2.1	64.2	3,082	2.0	202.0
TOTAL			772	1.3	31.0	17,780	1.4	803.4	15,910	1.1	572.5	34,459	1.3	1,406.9

Table 1: Summary of the September 2022 Mineral Resource Estimate by Project area. See Table 2 and Table 3 for details of individual deposit Mineral Resource estimates.

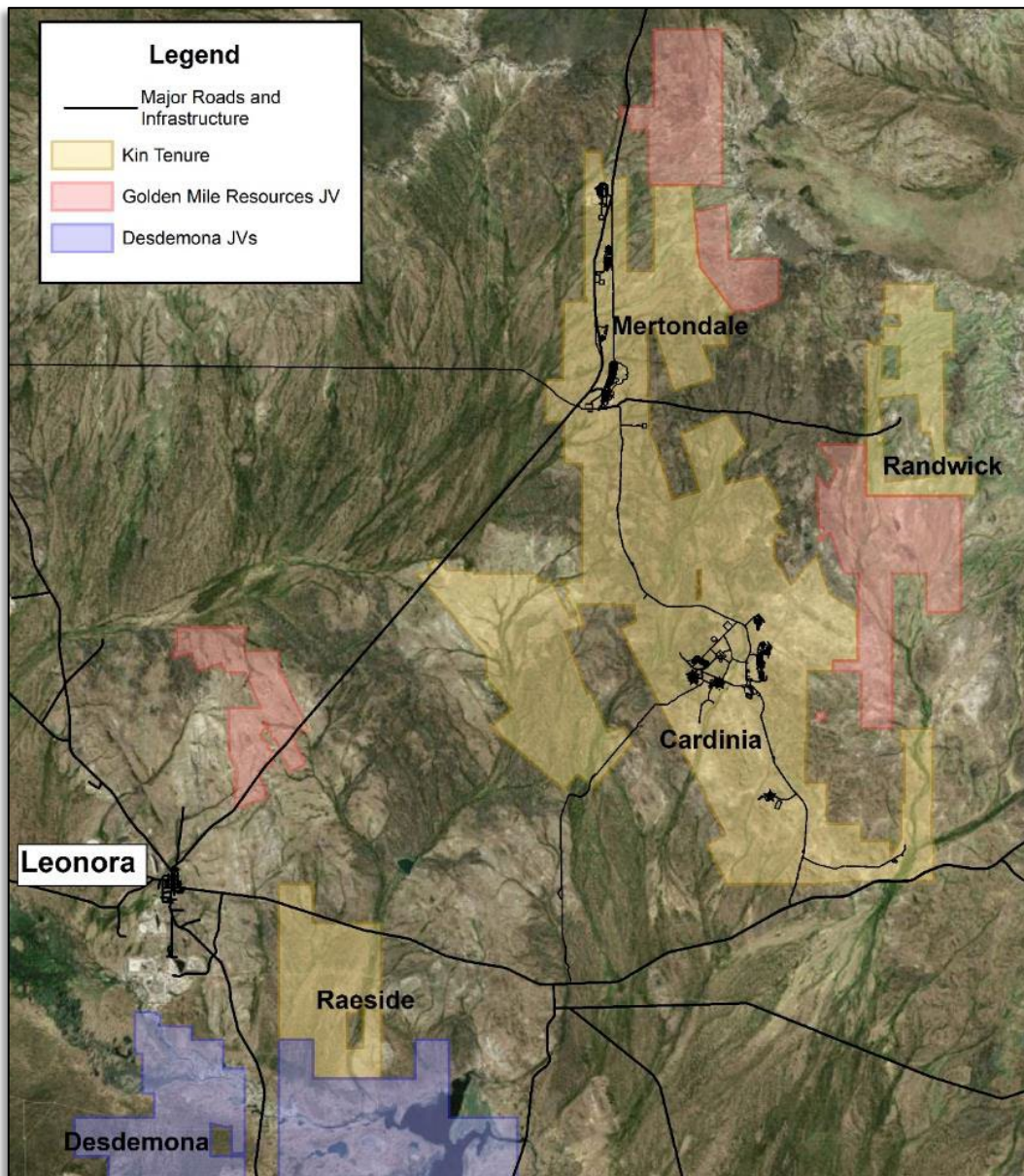


Figure 1: CGP location map.

Cardinia Gold Project: Open Pit Mineral Resources: September 2022															
Project Area	Resource Gold Price (AUD)	Lower Cut off (g/t Au)	Measured Resources			Indicated Resources			Inferred Resources			Total Resources			Date Announced
			Tonnes (Kt)	Au (g/t Au)	Au (k Oz)	Tonnes (Kt)	Au (g/t Au)	Au (k Oz)	Tonnes (Kt)	Au (g/t Au)	Au (k Oz)	Tonnes (Kt)	Au (g/t Au)	Au (k Oz)	
Mertondale															
Mertons Reward	\$ 2,600	0.4				893	2.1	62	1,987	0.6	41	2,879	1.1	103	26-Nov-20
Mertondale 3-4	\$ 2,600	0.4				1,345	1.8	80	1,048	1.0	32	2,393	1.5	112	26-Nov-20
Tonto	\$ 2,600	0.4				1,850	1.1	68	1,145	1.2	45	2,996	1.2	113	26-Nov-20
Mertondale 5	\$ 2,600	0.4				536	1.6	27	892	1.2	34	1,428	1.3	62	26-Nov-20
Eclipse	\$ 2,600	0.4				-	0.0	0	765	1.0	24	765	1.0	24	26-Nov-20
Quicksilver	\$ 2,600	0.4				-	0.0	0	1,202	1.1	42	1,202	1.1	42	26-Nov-20
Subtotal Mertondale						4,625	1.6	237	7,039	1.0	219	11,664	1.2	456	
Cardinia															
Bruno/Lewis	\$ 2,600	0.4	769	1.2	31	7,699	1.0	257	3,594	0.9	100	12,063	1.0	388	17-May-21
Kyte	\$ 2,600	0.4				340	1.5	17	114	0.9	3	453	1.4	20	26-Nov-20
Helens	\$ 2,600	0.4				738	2.1	50	337	1.9	21	1,075	2.1	71	26-Nov-20
Fiona	\$ 2,600	0.4				588	1.3	25	215	1.2	8	803	1.3	34	26-Nov-20
Rangoon	\$ 2,600	0.4				1,121	1.1	40	1,153	1.4	53	2,274	1.3	94	26-Sep-22
Hobby	\$ 2,600	0.4				-	0.0	0	582	1.3	23	582	1.3	23	17-May-21
Cardinia Hill	\$ 2,600	0.4				533	2.2	38	1,702	1.1	62	2,235	1.4	100	22-Sep-21
Subtotal Cardinia			769	1.2	31	11,020	1.2	428	7,696	1.1	271	19,485	1.2	729	
Raeside															
Michaelangelo	\$ 2,600	0.4				1,163	2.0	74	449	2.1	31	1,612	2.0	105	26-Nov-20
Leonardo	\$ 2,600	0.4				404	2.4	31	212	1.9	13	615	2.2	44	26-Nov-20
Forgotten Four	\$ 2,600	0.4				111	2.1	7	148	2.1	10	259	2.1	17	26-Nov-20
Krang	\$ 2,600	0.4				383	1.6	20	57	1.8	3	440	1.7	23	26-Nov-20
Subtotal Raeside						2,059	2.0	133	866	2.0	57	2,925	2.0	189	
Open Pit TOTAL			769	1.2	31	17,704	1.4	797	15,601	1.1	547	34,074	1.3	1,374	

Table 2: Cardinia Gold project Open Pit Mineral Resource estimate. Mineral Resources estimated by Jamie Logan, and reported in accordance with JORC 2012 using a 0.4g/t Au cut-off within AUD2,600 optimisation shells. Note * Cardinia Hill, Hobby and Bruno-Lewis Mineral Resource Estimates completed by Cube Consulting, and also reported in accordance with JORC 2012 using a 0.4g/t Au cut-off within AUD2,600 optimisation shells.

Cardinia Gold Project: Underground Mineral Resources: September 2022															
Project Area	Lower Cut off (g/t Au)	Measured Resources			Indicated Resources			Inferred Resources			Total Resources			Date Announced	
		Tonnes (Kt)	Au (g/t Au)	Au (k Oz)	Tonnes (Kt)	Au (g/t Au)	Au (k Oz)	Tonnes (Kt)	Au (g/t Au)	Au (k Oz)	Tonnes (Kt)	Au (g/t Au)	Au (k Oz)		
Mertondale															
Mertons Reward	2.0				3.7	2.6	0.3	6.8	2.8	0.6	10.5	2.7	0.9	26-Sep-22	
Mertondale 3-4	2.0				2.2	2.2	0.2				2.7	2.2	0.2	26-Sep-22	
Quicksilver	2.0				1.5	2.2	0.1	1.9	2.3	0.1	3.5	2.2	0.2	26-Sep-22	
Subtotal Mertondale					7.4	2.4	0.6	8.8	2.7	0.8	16.7	2.6	1.4		
Cardinia															
Bruno/Lewis	2.0	2.2	3.0	0.2	3.7	2.7	0.3	14.7	2.7	1.3	18.4	3.0	1.8	26-Sep-22	
Helens	2.0				1.8	2.7	0.2	44.9	2.8	4.1	46.6	2.8	4.2	26-Sep-22	
Fiona	2.0							10.0	2.4	0.8	10.0	2.4	0.8	26-Sep-22	
Rangoon	2.0							10.6	2.8	1.0	10.9	2.8	1.0	26-Sep-22	
Cardinia Hill	2.0							126.0	2.6	10.7	126.0	2.6	10.7	22-Sep-21	
Subtotal Cardinia		2.2	3.0	0.2	5.5	2.7	0.5	206.1	2.7	17.8	212.0	2.7	18.5		
Raeside															
Michaelangelo	2.0				5.2	2.4	0.4	56.8	2.4	4.3	62.0	2.4	4.7	26-Sep-22	
Leonardo	2.0				2.2	2.5	0.2	27.0	2.6	2.3	29.2	2.6	2.5	26-Sep-22	
Forgotten Four	2.0				24.9	2.7	2.2				24.9	2.7	2.2	26-Sep-22	
Krang	2.0				31.3	2.5	2.5	9.2	2.6	0.8	40.5	2.5	3.3	26-Sep-22	
Subtotal Raeside					63.5	2.6	5.3	92.9	2.5	7.4	156.5	2.5	12.6		
Underground TOTAL			2	3.0	0.2	76	2.6	6.3	308	2.6	25.9	385	2.6	32.5	

Table 3: Cardinia Gold Project Underground Mineral Resource estimate. Mineral Resources reported in accordance with JORC 2012 using a 2.0g/t Au cut-off grade outside AUD2,600 optimisation shells.

Rangoon Mineral Resource

The Rangoon deposit Mineral Resource estimate update consists of an additional 11,134 metres of RC Drilling and 1,561.8 metres of diamond drilling in 106 drill holes. The block model spans approximately 860 metres N-S and up to 200m E-W. It consists of two separate orientations of mineralisation. Steep to vertically dipping lodes bound the western and north western arms of the deposit. A flatter east dipping set of lodes exist in the central eastern side of the deposit and display generally higher grade as illustrated in cross section A-A' in *Figure 2 and Figure 4*.

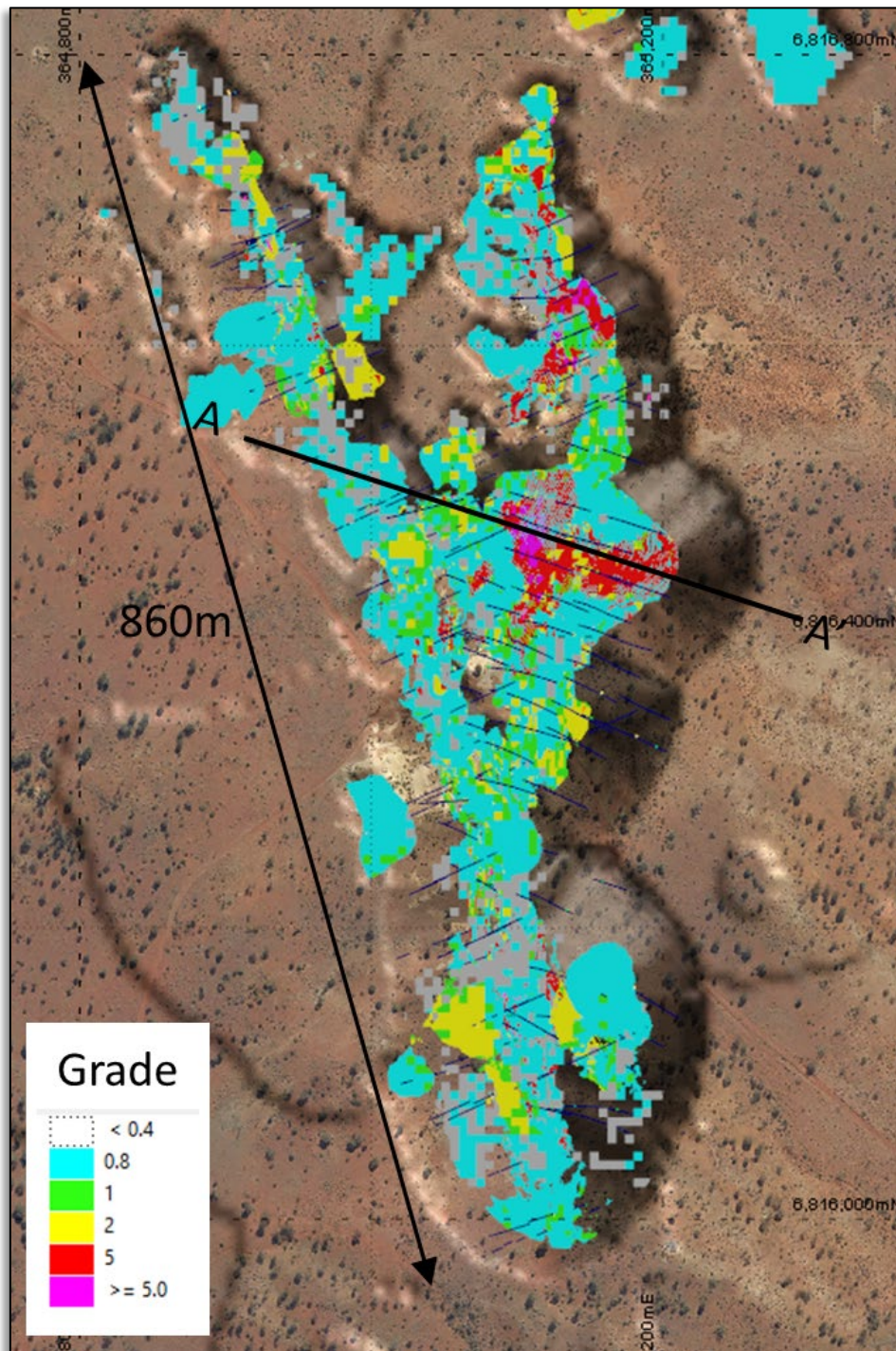


Figure 2: Rangoon deposit plan view. See Figure 4 for cross section A-A'. Note grade ranges are denoted by individual block grade upper limit. Eg Blue coloured blocks labelled 0.8, - range from 0.4g/t Au to 0.79g/t Au

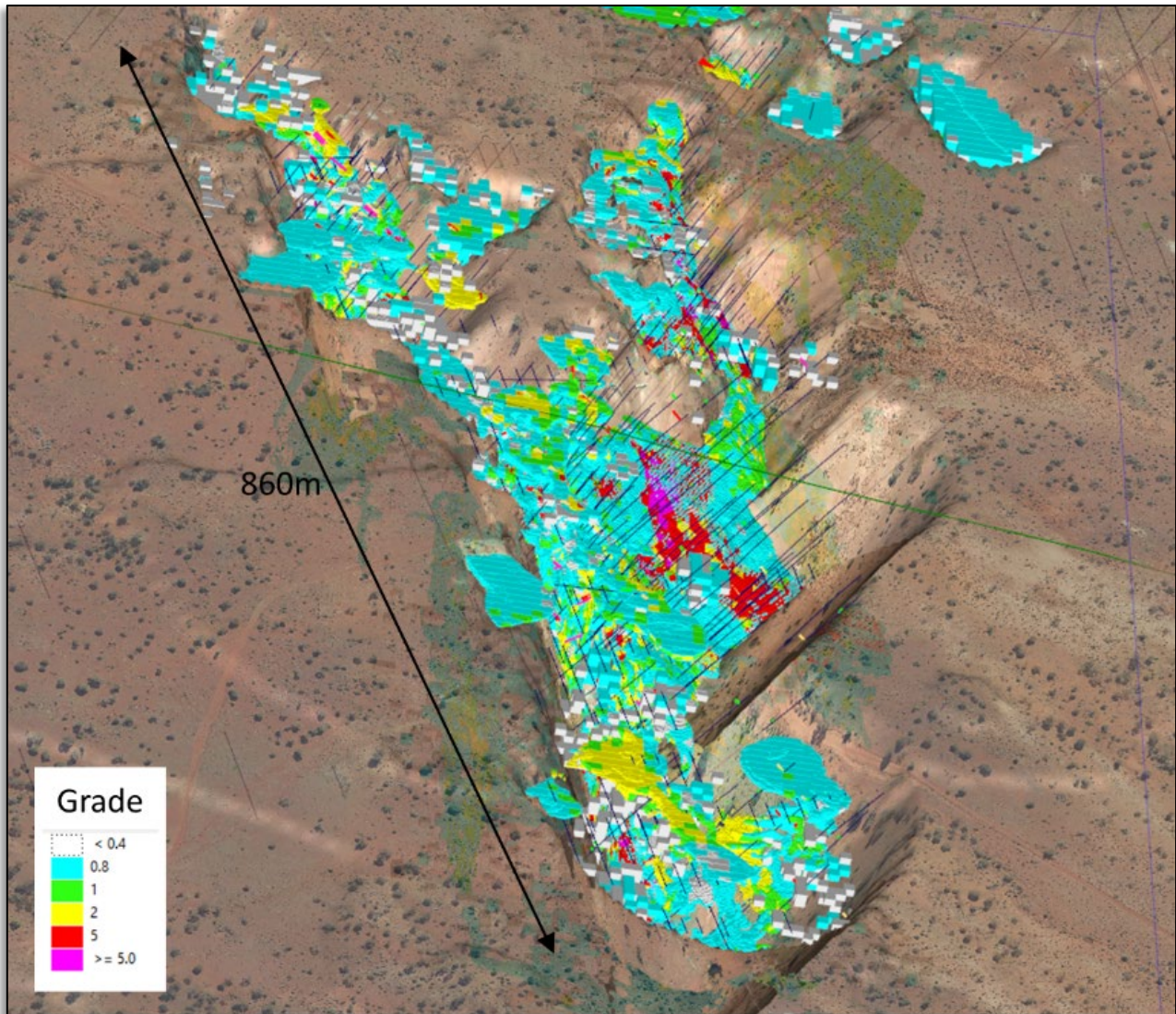


Figure 3: Rangoon Mineral Resource Orthogonal view looking North.

The mineralisation at Rangoon is consistent with other nearby deposits in the Eastern Corridor. The felsic volcanic and sedimentary sequence is intruded by dolerite sills and minor, late, felsic porphyries. All rock types have been intensely carbonate altered with sulphide mineralisation hosted by completely replaced portions of the host rock. The mineralisation assemblage consists of carbonate-sericite-quartz and sulphide, with the sulphide dominated by very fine pyrite. Gold mineralisation is strongly correlated with pyrite content and also associated with significant amounts of Ag, Sb, Te and Zn, as well as elevated Bi, Cu, Pb and Mo.

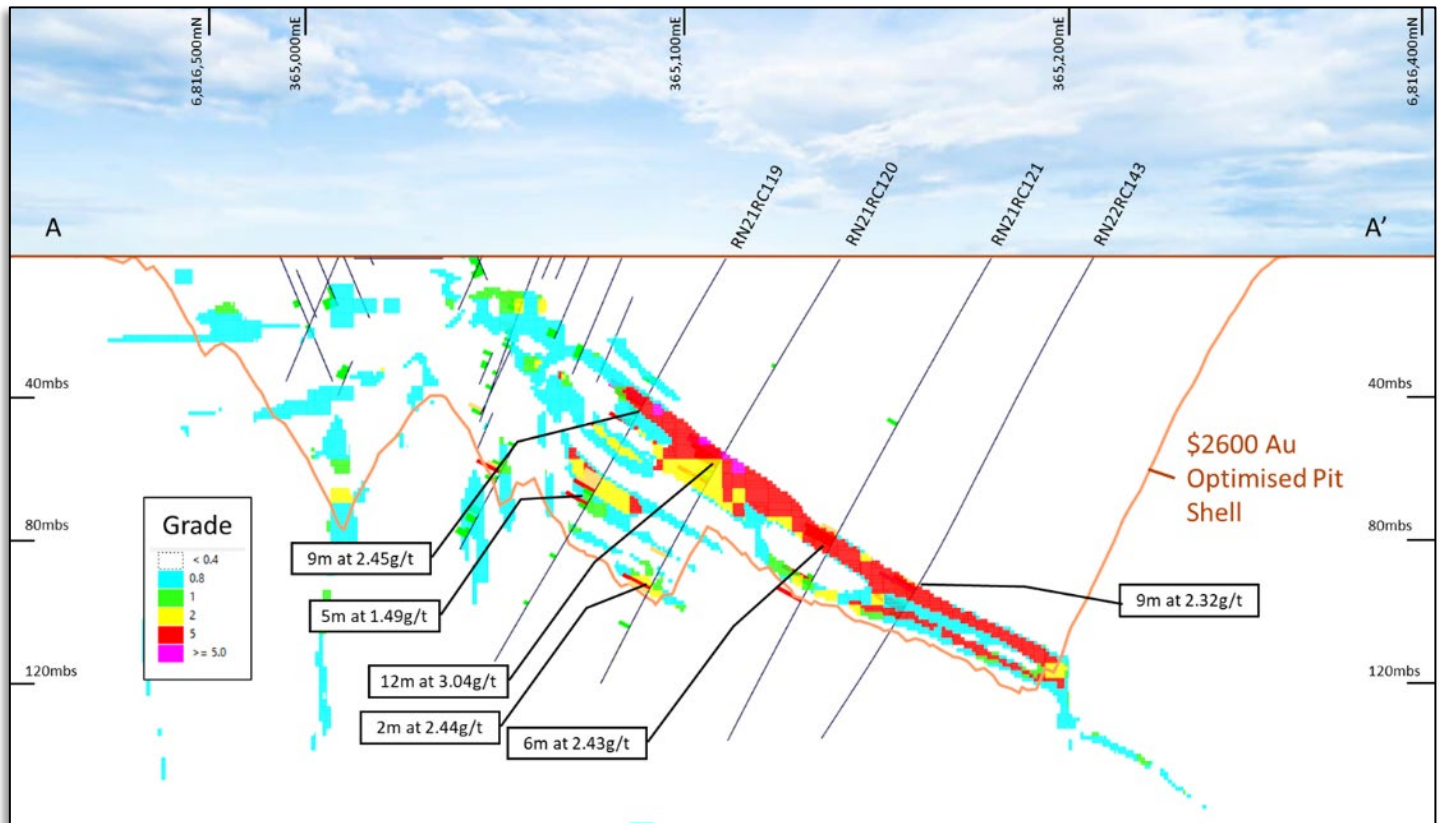


Figure 4: Rangoon Mineral Resource cross section A-A' looking north and illustrating the optimisation shell that constrains the Mineral Resource estimate. Further RC and diamond drilling will be undertaken to upgrade the categorisation of the Inferred Resources and confirm the downdip continuity of high grade ore into potential underground mining positions. Note the orientation of steep dipping, lower grade mineralisation on the western side and the flatter east dipping higher grade lodes on the eastern side.

-ENDS-

Authorised for release by the Board of Directors

For further information, please contact:

Investor enquiries

Andrew Munckton
 Managing Director, Kin Mining NL
 +61 8 9242 2227

Media enquiries

Nicholas Read
 Read Corporate
 +61 419 929 046

COMPETENT PERSONS STATEMENT

Mineral Resource Estimation

The information contained in this report relating to Mineral Resource Estimation results for the Cardinia Hill, Bruno Lewis and Hobby deposit relates to information compiled by Cube consulting (Mr Mike Millad). Mr Millad is a Member of the Australian Institute of Geoscientists (#5799) and a full time employee of Cube Consulting. Mr Millad has sufficient experience of relevance to the styles of mineralisation and the types of deposit under consideration, and to the activities undertaken to qualify as a Competent Person as defined in the 2012 edition of the JORC "Australasian Code for Reporting of Exploration Results, Mineral Resources and Ore Reserves".

The information contained in this report relating to Mineral Resource Estimation results for the remainder of the deposits including Kyte, Helens, Fiona, Rangoon, Mertons Reward, Mertondale 3-4, Tonto, Mertondale 5, Eclipse, Quicksilver, Michaelangelo, Leonardo, Forgotten Four and Krang relates to information compiled by Mr Jamie Logan of Polaris. Mr Logan is a member of the Australian Institute of Geoscientists and is a full time employee of Polaris, an industry leading consultancy group. Mr Logan has sufficient experience of relevance to the styles of mineralisation and the types of deposit under consideration, and to the activities undertaken to qualify as a Competent Person as defined in the 2012 edition of the JORC "Australasian Code for Reporting of Exploration Results, Mineral Resources and Ore Reserves".

Exploration Results

The information contained in this report relating to Exploration Results relates to information compiled or reviewed by Glenn Grayson. Mr Grayson is a member of the Australasian Institute of Mining and Metallurgy and is a full time employee of the company. Mr Grayson has sufficient experience of relevance to the styles of mineralisation and the types of deposit under consideration, and to the activities undertaken to qualify as a Competent Person as defined in the 2012 edition of the JORC "Australasian Code for Reporting of Exploration Results, Mineral Resources and Ore Reserves".

Mr Millad, Mr Logan and Mr. Grayson consent to the inclusion in this report of the matters based on information in the form and context in which it appears.

Appendix A

Table 1 Contents

- Section 1 Cardinia
- Section 2 Cardinia
- Section 3 Rangoon
- Reference Section 3 of the releases below for other Mineral Resource Estimations
 - ASX Announcement 23 September 2021 – Cardinia Hill
 - ASX Announcement 17 May 2021 – Bruno Lewis and Hobby
 - ASX Announcement 22 December 2020 – Kyte, Fiona Rangoon, Mertondale West, Mertondale 5, Raeside,
 - ASX Announcement 30 August 2019 – Helens, Mertondale East

Appendix A

JORC 2012 TABLE 1 REPORT

Cardinia Gold Project - Section 1

Section 1 Sampling Techniques and Data

(Criteria in this section apply to all succeeding sections.)

Criteria	• JORC Code explanation	Commentary
<p><i>Sampling techniques</i></p>	<p><i>Nature and quality of sampling (eg cut channels, random chips, or specific specialised industry standard measurement tools appropriate to the minerals under investigation, such as down hole gamma sondes, or handheld XRF instruments, etc). These examples should not be taken as limiting the broad meaning of sampling. Include reference to measures taken to ensure sample representivity and the appropriate calibration of any measurement tools or systems used.</i></p> <p><i>Aspects of the determination of mineralisation that are Material to the Public Report.</i></p> <p><i>In cases where ‘industry standard’ work has been done this would be relatively simple (eg ‘reverse circulation drilling was used to obtain 1 m samples from which 3 kg was pulverised to produce a 30g charge for fire assay’). In other cases more explanation may be required, such as where there is coarse gold that has inherent sampling problems. Unusual commodities or mineralisation types (eg submarine nodules) may warrant disclosure of detailed information.</i></p>	<p><u>Diamond</u></p> <p>Historic (pre-2014) diamond core (DD) sampling utilised half core or quarter core sample intervals; typically varying from 0.3m to 1.4m in length. 1m sample intervals were favoured and sample boundaries principally coincided with geological contacts.</p> <p>Recent (2014-2018) diamond core (DD) samples, either HQ3 or NQ2 in size diameter, were either cut in half longitudinally or further cut into quarters, using a powered diamond core drop saw centered over a cradle holding core in place. Core sample intervals varied from 0.2 to 1.25m in length but were predominantly aligned to 1m intervals or with sample boundaries which respected geological contacts.</p> <p>2019 diamond core samples, either HQ3 or NQ2 in size diameter, were either cut in half longitudinally or a third longitudinally, using an automated Corewise core saw Core was placed in boats, holding core in place. Core sample intervals varied from 0.3 to 1.3m in length but were predominantly aligned to 1m intervals or with sample boundaries which respected geological contacts.</p> <p><u>RC</u></p> <p>Historic reverse circulation (RC) drill samples were collected over 1m downhole intervals beneath a cyclone and typically riffle split to obtain a sub-sample (typically 3-4kg). 1m sub-samples were typically collected in pre-numbered calico bags and 1m sample rejects were commonly stored at the drill site. 3m or 4m composited interval samples were often collected by using a scoop (dry samples) or spear (wet samples). If composite samples returned anomalous results once assayed, the single metre sub-samples of the anomalous composite intervals were retrieved and submitted for individual gold analysis.</p> <p>Recent reverse circulation (RC) drill samples were collected by passing through a cyclone, a sample collection box, and riffle or cone splitter. All RC sub-samples were collected over one metre</p>

Criteria	• JORC Code explanation	Commentary
		<p>downhole intervals and averaged 3-4kg.</p> <p>2019-20 RC drilling samples were collected in 1m downhole intervals by passing through a cyclone, a collection box and then dropping through a cone splitter. All RC sub-samples were collected over one metre downhole intervals and averaged 3-4kg.</p> <p><u>AC/RAB</u></p> <p>Historic air core (AC) and rotary air blast (RAB) were typically collected at 1 metre intervals and placed on the ground with 3-4kg sub-samples collected using a scoop or spear. Three metre or four metre composited interval samples were often collected by using a scoop (dry samples) or spear (wet samples). If composite samples returned anomalous results once assayed, the single metre sub-samples of the anomalous composite intervals were retrieved and submitted for individual gold analysis.</p> <p><u>Assay Methodology</u></p> <p>Historic sample analysis typically included a number of commercial laboratories with preparation as per the following method, oven drying (90-110°C), crushing (<-2mm to <-6mm), pulverizing (<-75µm to <-105µm), and riffle split to obtain a 30, 40, or 50gram catchweight for gold analysis. Fire Assay fusion, with AAS finish was the common method of analysis however, on occasion, initial assaying may have been carried out via Aqua Regia digest and AAS/ICP finish. Anomalous samples were subsequently re-assayed by Fire Assay fusion and AAS/ICP finish.</p> <p>Recent sample analysis typically included oven drying (105-110°C), crushing (<-6mm & <-2mm), pulverising (P90% <-75µm) and sample splitting to a representative 50gram catchweight sample for gold only analysis using Fire Assay fusion with AAS finish.</p> <p>Multi element analysis was also conducted on approximately 10% of samples, predominantly through ore zones. This was conducted via a 4-acid digest with ICP-MS/OES determination for a 48 element suite.</p> <p><u>Rock Chips</u></p> <p>All rock chip samples are taken using a pick. The samples are taken from outcrop where possible. Samples are also taken from in situ float material or waste rock around historic workings, where outcrop is not present. Care is taken to ensure all samples are representative of the medium being sampled. For example, if a 1m sediment unit is being sampled, a channel sample will be taken across the entire unit.</p> <p>All recent drilling, sample collection and sample handling procedures were conducted and/or supervised by KIN geology personnel to high level industry standards. QA/QC procedures were implemented during each drilling program to industry standards.</p>
<i>Drilling techniques</i>	<i>Drill type (eg core, reverse circulation, open-hole hammer,</i>	Drilling carried out since 1986 and up to the most recent drill programs completed by KIN Mining was

Criteria	• JORC Code explanation	Commentary
	<p><i>rotary air blast, auger, Bangka, sonic, etc) and details (eg core diameter, triple or standard tube, depth of diamond tails, face-sampling bit or other type, whether core is oriented and if so, by what method, etc).</i></p>	<p>obtained from a combination of reverse circulation (RC), diamond core (DD), air core (AC), and rotary air blast (RAB) drilling.</p> <p>Data prior to 1986 is limited due to lack of exploration.</p> <p><u>Diamond</u></p> <p>Historic DD was carried out using industry standard ‘Q’ wireline techniques, with the core retrieved from the inner tubes and placed in core trays. Core sizes include NQ/NQ3 (Ø 45-48mm) and HQ/HQ3 (Ø 61-64mm). At the end of each core run, the driller placed core blocks in the tray, marked with hole number and depth. Core recovery was usually measured for each core run and recorded onto the geologist’s drill logs.</p> <p>2017 – 2018 DD was carried out by contractor Orbit Drilling Pty Ltd (“Orbit Drilling”) with a Mitsubishi truck-mounted Hydco 1200H 8x4 drill rig, using industry standard ‘Q’ wireline techniques. 2019-20 DD was carried out by Topdrill Pty Ltd. With a Sandvick DE840 mounted on a Mercedes Benz 4144 Actros 8x8 Carrier. The rig is fitted with Sandvik DA555 hands free diamond drilling rod handler and Austex hands free hydraulic breakout.</p> <p>Drill core is retrieved from the inner tubes and placed in plastic core trays and each core run depth recorded onto core marker blocks and placed at the end of each run in the tray. Core sizes include NQ2 (Ø 47mm) and HQ3 (Ø 64mm).</p> <p>Recent DD core recovery and orientation was obtained for each core run where possible, using electronic core orientation tools (e.g. Reflex EZ-ACT) and the ‘bottom of core’ marked accordingly.</p> <p>2017 -18 drilling was measured at regular downhole intervals, typically at 10-15m from surface and then every 30m to bottom of hole, using electronic multi-shot downhole survey tools (i.e. Reflex EZ-TRAC or Camteq Proshot). Independent programs of downhole deviation surveying were also carried out to validate previous surveys. These programs utilised either electronic continuous logging survey tool (AusLog A698 deviation tool) or gyroscopic survey equipment.</p> <p>2019-20 DD was surveyed at regular downhole intervals (every 30m with an additional end-of-hole survey) using electronic gyroscopic survey equipment.</p> <p><u>RC</u></p> <p>Historic RC drilling used conventional reverse circulation drilling techniques, utilising a cross-over sub, or face-sampling hammers with bit shrouds. Drill bit sizes typically ranged between 110-140mm.</p> <p>2017-18 RC drilling was carried out by Orbit Drilling’s truck-mounted Hydco 350RC 8x8 Actross drill rigs with 350psi/1250cfm air compressor, with auxiliary and booster air compressors (when required). Drilling utilised mostly downhole face-sampling hammer bits (Ø 140mm), with occasional use of blade bits for highly oxidized and soft formations. The majority of drilling retrieved dry</p>

Criteria	• JORC Code explanation	Commentary
		<p>samples, with the occasional use of the auxiliary and booster air compressors beneath the water table, to maintain dry sample return as much as possible. RC drillhole deviations were surveyed downhole, typically carried out inside a non-magnetic stainless steel (s/s) rod located above the hammer, using electronic multi-shot downhole tool (e.g. Reflex EZ-TRAC). In some instances, drillholes were surveyed later in open hole. Independent programs of downhole deviation surveying were also carried out to validate previous surveys. These programs utilised either electronic continuous logging survey tool (AusLog A698 deviation tool) or gyroscopic survey equipment.</p> <p>2019-20 RC drilling was carried out by Swick Mining Services truck-mounted Swick version Schramm 685 RC Drill Rig (Rod Handler & Rotary Cone Splitter) with support air truck and dust suppression equipment. Drilling utilised downhole face-sampling hammer bits (Ø 140mm). The majority of drilling retrieved dry samples, with the occasional use of the auxiliary and booster air compressors beneath the water table, to maintain dry sample return as much as possible.</p> <p>2019-20 RC was surveyed at regular downhole intervals (every 30m with an additional end-of-hole survey) using electronic gyroscopic survey equipment.</p> <p><u>AC/RAB</u></p> <p>Historic AC drilling was conducted utilising suitable rigs with appropriate compressors (eg 250psi/600cfm). AC holes were drilled using ‘blade’ or ‘wing’ bits, until the bit was unable to penetrate (‘blade refusal’), often near the fresh rock interface. Hammer bits were used only when it was deemed necessary to penetrate further into the fresh rock profile or through notable “hard boundaries” in the regolith profile. No downhole surveying is noted to have been undertaken on AC drillholes.</p> <p>Historic RAB drilling was carried out using small air compressors (eg 250psi/600cfm) and drill rods fitted with a percussion hammer or blade bit, with the sample return collected at the drillhole collar using a stuffing box and cyclone collection techniques. Drillhole sizes generally range between 75-110mm. No downhole surveying is noted to have been undertaken on RAB drillholes.</p>
<p><i>Drill sample recovery</i></p>	<p><i>Method of recording and assessing core and chip sample recoveries and results assessed. Measures taken to maximise sample recovery and ensure representative nature of the samples. Whether a relationship exists between sample recovery and grade and whether sample bias may have occurred due to preferential loss/gain of fine/coarse material.</i></p>	<p><u>Diamond</u></p> <p>Historic core recovery was recorded in drill logs for most of the diamond drilling programs since 1985. A review of historical reports indicates that core recovery was generally good (>80%) with lesser recoveries recorded in zones of broken ground and/or areas of mineralisation. Overall recoveries are considered acceptable for resource estimation.</p> <p>Recent core recovery data was recorded for each run by measuring total length of core retrieved against the downhole interval actually drilled and stored in the database. KIN representatives continuously monitor core recovery and core presentation quality as drilling is conducted and issues or discrepancies are rectified promptly to maintain industry best standards. Core recoveries</p>

Criteria	• JORC Code explanation	Commentary
		<p>averaged >95%, even when difficult ground conditions were being encountered. When poor ground conditions were anticipated, a triple tube drilling configuration was utilised to maximize core recovery</p> <p><u>RC/AC/RAB</u></p> <p>Historic sample recovery information for RC, AC, and RAB drilling is limited.</p> <p>Recent RC drilling samples are preserved as best as possible during the drilling process. At the end of each 1 metre downhole interval, the driller stops advancing, retracts from the bottom of hole, and waits for the sample to clear from the bottom of the hole through to the sample collector box fitted beneath the cyclone. The sample is then released from the sample collector box and passed through either a 3-tiered riffle splitter or cone splitter fitted beneath the sample box.</p> <p>Drilling prior to 2018 utilised riffle split collection whereas sample collection via a cone splitter was conducted for drilling undertaken since March 2018; cyclone cleaning processes remained the same.</p> <p>Sample reject is collected in plastic bags, and a 3-4kg sub-sample is collected in pre-marked calico bags for analysis. Once the samples have been collected, the cyclone, sample collector box and riffle splitter are flushed with compressed air, and the splitter cleaned by the off-sider using a compressed air hose at both the end of each 6 metre drill rod and then extensively cleaned at the completion of each hole. This process is maintained throughout the entire drilling program to maximise drill sample recovery and to maintain a high level of representivity of the material being drilled. From 2020 sample rejects are placed on the ground.</p> <p>RC drill sample recoveries are not recorded in the database however a review by Carras Mining Pty Ltd (CM) in 2017, of RC drill samples stored in the field, and ongoing observations of RC drill rigs in operation by KIN representatives, suggests that RC sample recoveries were mostly consistent and typically very good (>90%).</p> <p>Collected samples are deemed reliable and representative of drilled material and no material discrepancy, that would impede a mineral resource estimate, exists between collected RC primary and sub-samples.</p>
Logging	<p><i>Whether core and chip samples have been geologically and geotechnically logged to a level of detail to support appropriate Mineral Resource estimation, mining studies and metallurgical studies.</i></p> <p><i>Whether logging is qualitative or quantitative in nature.</i></p> <p><i>Core (or costean, channel, etc) photography.</i></p> <p><i>The total length and percentage of the relevant intersections logged.</i></p>	<p>Logging data coded in the database, prior to 2014, illustrates at least four different lithological code systems, a legacy of numerous past operators (Hunter, MPI, Metana, CIM, MEGM, Pacmin, SOG, and Navigator). Correlation between codes is difficult to establish however, based on historical reports, drill hole logging procedures appear consistent with normal industry practices of the time.</p> <p>KIN has attempted to validate historical logging data and to standardize the logging code system by incorporating the SOG and Navigator logging codes into one.</p> <p><u>Diamond</u></p>

Criteria	• JORC Code explanation	Commentary
		<p>Historical diamond core logging was recorded into drill logs for most of the diamond drilling programs since 1985. A review of historical reports indicates that logging noted core recovery, fractures per metre and RQD, lithology, alteration, texture, mineralisation, weathering, and other features. Core was then marked up for cutting and sampling.</p> <p>Navigator’s procedure for logging of diamond core included firstly marking of the bottom of the core (for successful core orientations), then recording of core recovery, fractures per metre and RQD, lithology, alteration, texture, mineralisation, weathering, and other features. Core was then marked up for cutting and sampling. Navigator DD logging is predominantly to geological contacts.</p> <p>Navigator logging information was entered directly into hand held digital data loggers and transferred directly to the database, after validation, to minimize data entry errors.</p> <p>Drill core photographs, for drilling prior to 2014, are available only for diamond drillholes completed by Navigator.</p> <p>KIN DD logging is carried out on site once geology personnel retrieve core trays from the drill rig site. Core is collected from the rig daily. The entire length of every hole is logged. Recorded data includes lithology, alteration, structure, texture, mineralisation, sulphide content, weathering and other features. Drillhole collar coordinates, azimuth, dip, depth and sampling intervals are also recorded. KIN DD logging is to geological contacts.</p> <p>Qualitative logging includes classification and description of lithology, weathering, oxidation, colour, texture and grain size. Quantitative logging includes percentages of identified minerals, veining, and structural measurements (using a kenometer tool). In addition, logging of diamond drilling includes geotechnical data, RQD and core recoveries.</p> <p>Drill core is photographed at the Cardinia site, prior to any cutting and/or sampling, and then stored at Cardinia. Photographs are available for every diamond drillhole completed by KIN and a selection of various RC chip trays. SG data is also collect</p> <p>All information collected is entered directly into laptop computers or tablets, validated in the field, and then transferred to the database.</p> <p>The level of logging detail is considered appropriate for exploration and to support appropriate mineral resource estimation, mining studies, and metallurgical studies.</p> <p>Diamond drillholes completed for geotechnical purposes were independently logged for structural data by geotechnical consultants.</p> <p><u>RC/AC/RAB</u></p> <p>Historical RC, AC, and RAB logging (including Navigator) was entered on a metre by metre basis. Logging consisted of lithology, alteration, texture, mineralisation, weathering, and other features</p>

Criteria	• JORC Code explanation	Commentary
		<p>For the majority of historical drilling (pre-2004) the entire length of each drillhole have been logged from surface to ‘end of hole’.</p> <p>KIN RC logging of was carried out in the field and logging has predominantly been undertaken on a metre by metre basis. KIN logging is inclusive of the entire length of each RC drillhole from surface to ‘end of hole’.</p> <p>Recorded data includes lithology, alteration, structure, texture, mineralisation, sulphide content, weathering and other features. Drillhole collar coordinates, azimuth, dip, depth and sampling intervals are also recorded.</p> <p>Qualitative logging includes classification and description of lithology, weathering, oxidation, colour, texture and grain size. Quantitative logging includes identification and percentages of mineralogy, sulphides, mineralisation, and veining.</p> <p>Photographs are available for a selection of recent KIN RC drillholes.</p> <p>All information collected is entered directly into laptop computers or tablets, validated in the field, and then transferred to the database.</p> <p>The level of logging detail is considered appropriate for exploration and to support appropriate mineral resource estimation, mining studies, and metallurgical studies.</p> <p><u>Rock Chips</u></p> <p>All rock chip samples are inspected by the sampling geologist and logged for lithology, alteration, mineralisation, veining, and structural fabric. This is a combination of qualitative and quantitative data.</p>
<p><i>Sub-sampling techniques and sample preparation</i></p>	<p><i>If core, whether cut or sawn and whether quarter, half or all core taken.</i></p> <p><i>If non-core, whether riffled, tube sampled, rotary split, etc and whether sampled wet or dry.</i></p> <p><i>For all sample types, the nature, quality and appropriateness of the sample preparation technique.</i></p> <p><i>Quality control procedures adopted for all sub-sampling stages to maximise representivity of samples.</i></p> <p><i>Measures taken to ensure that the sampling is representative of the in situ material collected, including for instance results for field duplicate/second-half sampling.</i></p> <p><i>Whether sample sizes are appropriate to the grain size of the material being sampled.</i></p>	<p><u>Diamond</u></p> <p>Historic diamond drill core (NQ/NQ3 or HQ/HQ3) samples collected for analysis were longitudinally cut in half, and occasionally in quarters for the larger (HQ/HQ3) diameter holes, using a powered diamond core drop saw centered over a cradle holding the core in place. Half core or quarter core sample intervals typically varied from 0.3m to 1.4m in length. 1m sample intervals were favoured and are the most common method of sampling, however sample boundaries do principally coincide with geological contacts. The remaining core was retained in core trays.</p> <p>2017-18 diamond drill core samples collected for analysis were longitudinally cut in half, with some samples cut into quarters, using a powered diamond core drop saw blade centered over a cradle holding the core in place. Core sample intervals varied from 0.2 to 1.25m in length but were predominantly aligned to 1m intervals or with sample boundaries which respected geological contacts. The remaining core was retained in their respective core trays and stored in KIN’s yard for future reference. All KIN diamond drill core is securely stored at the KIN Leonora Yard.</p>

Criteria	• JORC Code explanation	Commentary
		<p>2019-20 diamond drill core samples collected for analysis were longitudinally cut in half, with some samples cut into thirds, using an automated Corewise powered diamond core saw with the blade centered over a boat holding the core in place. Core sample intervals varied from 0.2 to 1.25m in length but were predominantly aligned to 1m intervals or with sample boundaries which respected geological contacts. The remaining core was retained in their respective core trays and stored in KIN's yard for future reference. All KIN diamond drill core is securely stored at the Cardinia coreyard.</p> <p>All sub-sampling techniques and sample preparation procedures conducted and/or supervised by KIN geology personnel are to standard industry practice. Sub-sampling and sample preparation techniques used are considered to maximise representivity of drilled material. QA/QC procedures implemented during each drilling program are to industry standard practice.</p> <p>Samples sizes are considered appropriate for this style of gold mineralisation and as an industry accepted method for evaluation of gold deposits in the Eastern Goldfields of Western Australia.</p> <p><u>RC/AC/RAB</u></p> <p>Historic sampling was predominantly conducted by collecting 1m samples from beneath a cyclone and either retaining these primary samples or passing through a riffle splitter to obtain a 3-4kg sub-sample for analysis. First pass sampling often involved collecting composite samples by using a scoop (dry samples) or spear/tube (wet samples) to obtain 3m or 4m composited intervals, with the single metre split samples being retained at the drill site as spoil or in sample bags. If composite sample assays returned anomalous results, the single metre samples for this composite were retrieved and submitted for analysis. RC/AC/RAB sampling procedures are believed to be consistent with the normal industry practices at the time.</p> <p>Samples obtained from conventional RC drilling techniques with cross-over subs often suffered from down hole contamination, especially beneath the water table. Samples obtained from RC drilling techniques using the face sampling hammer suffered less from down hole contamination and were more likely to be kept dry beneath the water table, particularly if auxiliary and booster air compressors were used. These samples are considered to be representative.</p> <p>The vast majority of Reverse Circulation (RC) drill samples were collected at 1m downhole intervals from beneath a cyclone and then riffle split to obtain a sub-sample (typically 3-4kg). After splitting, 1m sub-samples were typically collected in pre-numbered calico bags, and the 1m sample rejects were commonly stored at the drill site in marked plastic bags, for future reference. First pass sampling often involved collecting composite samples by using a scoop (dry samples) or spear/tube (wet samples) to obtain 3m or 4m composited intervals, with the single metre split sub-samples being retained at the drill site. If the composite sample assays returned anomalous results, single metre sub-samples for the anomalous composite intervals were retrieved and submitted for</p>

Criteria	• JORC Code explanation	Commentary
		<p>analysis.</p> <p>Navigator included standards, fields duplicate splits (since 2009), and blanks within each drill sample batch, at a ratio of 1 for every 20 samples, with the number of standards being inserted at a ratio of 1 for every 50 samples.</p> <p>Recent RC sub-samples were collected over 1 metre downhole intervals and retained in pre-marked calico bags, after passing through a cyclone and either a riffle splitter, prior to March 2018, or cone splitter, after March 2018. The majority of RC sub-samples consistently averaged 3-4kg. Sample reject from the riffle splitter were retained and stored in plastic bags, and located near each drillhole site. When drilling beneath the water table, the majority of sample returns were kept dry by the use of the auxiliary and booster air compressors. Very few wet samples were collected through the splitter, and the small number of wet or damp samples is not considered material for resource estimation work.</p> <p>KIN RC drill programs utilise field duplicates, at regular intervals at a ratio of 1:25, and assay results indicate that there is reasonable analytical repeatability; considering the presence of nuggety gold.</p> <p>All sub-sampling techniques and sample preparation procedures conducted and/or supervised by KIN geology personnel are to standard industry practice. Sub-sampling and sample preparation techniques used are considered to maximise representivity of drilled material. QA/QC procedures implemented during each drilling program are to industry standard practice.</p> <p>Samples sizes are considered appropriate for this style of gold mineralisation and as an industry accepted method for evaluation of gold deposits in the Eastern Goldfields of Western Australia.</p> <p>No duplicates are taken for rock chip sampling. Sample sizes are approximately 3kg, this is considered appropriate for the material being sampled.</p>
<p>Quality of assay data and laboratory tests</p>	<p><i>The nature, quality and appropriateness of the assaying and laboratory procedures used and whether the technique is considered partial or total.</i></p> <p><i>For geophysical tools, spectrometers, handheld XRF instruments, etc, the parameters used in determining the analysis including instrument make and model, reading times, calibrations factors applied and their derivation, etc.</i></p> <p><i>Nature of quality control procedures adopted (eg standards, blanks, duplicates, external laboratory checks) and whether acceptable levels of accuracy (ie lack of bias) and precision have been established.</i></p>	<p>Numerous assay laboratories and various sample preparation and assay techniques have been used since 1981. Historical reporting and descriptions of laboratory sample preparation, assaying procedures, and quality control protocols for the samples from the various drilling programs are variable in their descriptions and completeness.</p> <p>Assay data obtained prior to 2001 is incomplete and the nature of results could not be accurately quantified due to the combinations of various laboratories and analytical methodologies utilised.</p> <p>Since 1993, the majority of samples submitted to the various laboratories were typically prepared for analysis firstly by oven drying, crushing and pulverizing to a nominal 85% passing 75µm.</p> <p>In the initial exploration stages, Aqua Regia digest with AAS/ICP finish, was generally used as a first pass detection method, with follow up analysis by Fire Assay fusion and AAS/ICP finish. This was a common practice at the time. Mineralised intervals were subsequently Fire Assayed (using 30, 40 or 50 gram catchweights) with AAS/ICP finish.</p>

Criteria	• JORC Code explanation	Commentary
		<p>Approximately 15-20% of the sampled AC holes may have been subject to Aqua Regia digest methods only, however AC samples were predominantly within the oxide profile, where aqua regia results would not be significantly different to results from fire assay methods.</p> <p>Limited information is available regarding check assays for drilling programs prior to 2004.</p> <p>During 2004-2014, Navigator utilised six different commercial laboratories during their drilling programs, however Kalgoorlie Assay Laboratories conducted the majority of assaying for diamond, RC, and AC samples using Fire Assay fusion on 40 gram catchweights with AAS/ICP finish.</p> <p>Since 2009 Navigator regularly included field duplicates and Certified Reference Material (CRM), standards and blanks, with their sample batch submissions to laboratories at average ratio of 1 in 20 samples. Sample assay repeatability and blank and CRM standard assay results were typically within acceptable limits.</p> <p>KIN sample analysis from 2014 to 2018 was conducted by SGS Australia Pty Ltd's ("SGS") Kalgoorlie and Perth laboratories. Sample preparation included oven drying (105°C), crushing (<6mm), pulverising (P90% passing 75µm) and riffle split to obtain a 50 gram catchweight. Analysis for gold only was carried out by Fire Assay fusion technique with AAS finish (SGS Lab Code FAA505).</p> <ul style="list-style-type: none"> • KIN regularly insert blanks and CRM standards in each sample batch at a ratio of 1:50. This allows for at least one blank and one CRM standard to be included in each of the laboratory's fire assay batch of 50 samples. Field duplicates are typically collected at a ratio of 1:50 samples and test sample assay repeatability. Blanks and CRM standards assay result performance is predominantly within acceptable limits for this style of gold mineralisation. • KIN requests laboratory pulp grind and crush checks at a ratio of 1:50 or less since May 2018 in order to better qualify sample preparation and evaluate laboratory performance. Samples have generally illustrated appropriate crush and grind size percentages since the addition of this component to the sample analysis procedure. • SGS include laboratory blanks and CRM standards as part of their internal QA/QC for sample preparation and analysis, as well as regular assay repeats. Sample pulp assay repeatability, and internal blank and CRM standards assay results are typically within acceptable limits. <p>From late 2018 samples have been analysed by Intertek Genalysis, with sample preparation either at their Kalgoorlie prep laboratory or the Perth Laboratory located in Maddington. . Sample preparation included oven drying (105°C), crushing (<6mm), pulverising (P90% passing 75µm) and split to obtain a 50 gram catchweight. Analysis for gold only was carried out by Fire Assay fusion technique with AAS finish.</p> <ul style="list-style-type: none"> • KIN regularly insert blanks and CRM standards in each sample batch at a ratio of 1:25. Kin accepts that this ratio of QAQC is industry standard. Field duplicates are typically collected at a ratio of

Criteria	• JORC Code explanation	Commentary
		<p>1:25 samples and test sample assay repeatability. Blanks and CRM standards assay result performance is predominantly within acceptable limits for this style of gold mineralisation.</p> <ul style="list-style-type: none"> • KIN requests laboratory pulp grind and crush checks at a ratio of 1:50 or less since May 2018 in order to better qualify sample preparation and evaluate laboratory performance. Samples have generally illustrated appropriate crush and grind size percentages since the addition of this component to the sample analysis procedure. • Genalysis include laboratory blanks and CRM standards as part of their internal QA/QC for sample preparation and analysis, as well as regular assay repeats. Sample pulp assay repeatability, and internal blank and CRM standards assay results are typically within acceptable limits. <p>The nature and quality of the assaying and laboratory procedures used are considered to be satisfactory and appropriate for use in mineral resource estimations.</p> <p>Fire Assay fusion is considered to be a total extraction technique. The majority of assay data used for the mineral resource estimations were obtained by the Fire Assay technique with AAS or ICP finish. AAS and ICP methods of detection are both considered to be suitable and appropriate methods of detection for this style of mineralisation</p> <p>Aqua Regia is considered a partial extraction technique, where gold encapsulated in refractory sulphides or some silicate minerals may not be fully dissolved, resulting in partial reporting of gold content.</p> <p>No other analysis techniques have been used to determine gold assays.</p> <p>Ongoing QAQC monitoring program identified one particular CRM returning spurious results. Further analysis demonstrated that the standard was compromised and was subsequently removed and destroyed. A replacement CRM of similar grade was substituted into the QAQC program.</p> <p>KIN continues to both develop and reinforce best practice QAQC methods for all drilling operations and the treatment and analysis of samples. Regular laboratory site visits and audits have been introduced since April 2018 and will be conducted on an annual basis. This measure will ensure that all aspects of KIN QAQC practices are adhered to and align with industry best practice.</p> <p>All rock chip samples have been submitted to Intertek Genalysis (Perth) for analysis by 50g Fire assay, with multi-element analysis via a 4-acid digest for a 48-element suite. Sample preparation included oven drying (105°C), crushing (<6mm), pulverising (P90% passing 75µm). Blanks and standards are inserted by the lab at a minimum rate of 1 in 50. Lab repeats are performed for samples with particularly high gold values. Due to the nature and intended uses of this data, this QAQC procedure is intentionally less rigorous than that used for drilling samples.</p>
<i>Verification of sampling and assaying</i>	<i>The verification of significant intersections by either independent or alternative company personnel.</i>	Verification of sampling, assay techniques, and results prior to 2004 is limited due to the legacy of the involvement of various companies, personnel, drilling equipment, sampling protocols and

Criteria	• JORC Code explanation	Commentary
	<p><i>The use of twinned holes.</i></p> <p><i>Documentation of primary data, data entry procedures, data verification, data storage (physical and electronic) protocols.</i></p> <p><i>Discuss any adjustment to assay data.</i></p>	<p>analytical techniques at different laboratories.</p> <p>During 2009, a selection of significant intersections had been verified by Navigator’s company geologists and an independent consultant McDonald Speijers (“MS”). MS were able to validate 92% of the assay records in 50 randomly selected check holes, and only 6 assay discrepancies were detected (< 0.2%), only 2 of those were considered significant. MS concluded that the very small proportion of discrepancies indicated that the assay database was probably reliable at that time.</p> <p>In 2009, Runge Ltd (“Runge”) completed a mineral resource estimate report for the Cardinia Project area, including the Helens, Rangoon, Kyte and Bruno-Lewis deposits. Runge’s database verification included basic visual validation in Surpac and field verification of drillhole positions in February 2009. Runge did not report any significant issues with the database.</p> <p>Since 2014, significant drill intersections have been verified by KIN company geologists during the course of the drilling programs.</p> <p>During 2017, Carras Mining Pty Ltd (“CM”) carried out an independent data verification. 38,098 assay records for KIN 2014-2017 drilling programs were verified by comparing laboratory assay reports against the database. 6 errors were found, which are not considered material and which represented only 0.03% of all database records verified for KIN 2014-2017 drilling programs</p> <p>No adjustments, averaging or calibrations are made to any of the assay data recorded in the database. QA/QC protocol is considered industry standard with standard reference material submitted on a routine basis.</p> <p>Recent (2014-2018) RC and diamond drilling by KIN included twinning of some historical holes within the Helens and Rangoon resource areas. There is no significant material difference between historical drilling information and KIN drilling information.</p> <p>Areas without twinned holes illustrate a drill density that is considered sufficient to enable comparison with surrounding historic information. No material difference of a negative nature exists between historical drilling information and KIN drilling information.</p> <p>KIN diamond holes drilled for metallurgical and geotechnical test work illustrate assay results with adequate correlation to both nearby historical and recent drilling results.</p> <p>No adjustment or calibration has been made to assay data.</p>
<p><i>Location of data points</i></p>	<p><i>Accuracy and quality of surveys used to locate drill holes (collar and down-hole surveys), trenches, mine workings and other locations used in Mineral Resource estimation.</i></p> <p><i>Specification of the grid system used.</i></p> <p><i>Quality and adequacy of topographic control.</i></p>	<p>Several local grids were established and used by previous project owners. During the 1990s, SOG transformed the surface survey data firstly to AMG and subsequently to MGA (GDA94 zone51).</p> <p>Navigator recognised errors in the collar co-ordinates resulting from transformations and as a result, a significant number of holes were resurveyed and a new MGA grid transformation generated. Historical collars have been validated against the original local grid co-ordinates and independently transformed to MGA co-ordinates and checked against the database. Navigator’s MGA co-ordinates</p>

Criteria	• JORC Code explanation	Commentary
		<p>were checked against the surveyor's reports.</p> <p>Drilling was carried out using these various local grids. Since 2004, All Navigators drill hole collars were surveyed on completion of drilling in the Australian MGA94, Zone51 grid using RTK-DGPS equipment by licensed surveyors, with more than 80% of the pickups carried out by independent contractors.</p> <p>Almost all the diamond and at least 70% of Navigator RC holes were downhole surveyed. Pre-Navigator, single shot survey cameras were used, with typical survey intervals of 30-40 metres.</p> <p>Recent KIN drill hole collars are located and recorded in the field by a contract surveyor using RTK-DGPS (with a horizontal and vertical accuracy of $\pm 50\text{mm}$). Location data was collected in the GDA94 Zone51 grid coordinate system.</p> <p>Downhole surveying was predominantly carried out by the drilling contractor which, prior to late 2018, was Orbit Drilling Pty Ltd. This was conducted using a downhole electronic single shot magnetic tool. (Relfex EZ-shot), which is industry standard practice. This is considered sufficiently accurate except where significant magnetic interference is encountered. The magnetic field is recorded on every survey and flagged when likely to interfere with the reading. These surveys are downgraded in the database. In addition, if the downhole survey tool is located within 15 metres of the surface, there is risk of influence from the drill rig affecting the azimuth readings. This was observed for the survey readings, which include total magnetic intensity (TMI) measurements, where TMI is spurious for readings taken at downhole depths less than 20 metres. These spurious readings are included in the database, but are not used.</p> <p>Downhole surveying in 2019 has been conducted by the drilling contractors (Topdrill Pty Ltd and Swick Mining Services Pty Ltd) utilizing downhole electronic gyroscopic survey tools. These are considered very accurate and not susceptible to magnetic interference. No further surveying required to check drill hole deviation.</p> <p>A small selection of drillhole collars, which do not have DGPS collar surveys, were picked up with a handheld GPS and individually appraised in regards to their location prior to modelling; the position of these collars is deemed appropriate for the resource estimation work.</p> <p>Considering the history of grid transformations and surviving documentation, there might be some residual risk of error in the MGA co-ordinates for old drillholes, however this is not considered to be material for the resource estimation.</p> <p>Azimuth data was historically recorded relative to magnetic north. Much of the historical drilling data was recorded relative to magnetic north. Variation in magnetic declination for the Cardinia Project area is calculated at $+0.823^\circ$ East (1985) to $+1.301^\circ$ East (2017), with a maximum variation of $+1.575^\circ$ in 2005. The difference between true north and magnetic north, and the annual variation in magnetic declination since 1985 is not significant, therefore magnetic north measurements have been used,</p>

Criteria	• JORC Code explanation	Commentary
		<p>where true north data is unavailable, for all survey data used in resource estimation processes.</p> <p>The accuracy of drill hole collars and downhole data are located with sufficient accuracy for use in resource estimation work.</p> <p>For rock chip samples, locations are recorded at the time of sampling using a handheld GPS in the GDA94 Zone51 grid coordinate system.</p>
<i>Data spacing and distribution</i>	<p><i>Data spacing for reporting of Exploration Results.</i></p> <p><i>Whether the data spacing and distribution is sufficient to establish the degree of geological and grade continuity appropriate for the Mineral Resource and Ore Reserve estimation procedure(s) and classifications applied.</i></p> <p><i>Whether sample compositing has been applied.</i></p>	<p>Drill hole spacing patterns vary considerably throughout the Cardinia Gold Project area and are deposit specific, depending on the nature and style of mineralisation being tested.</p> <p>Drill hole spacing within the resource areas is sufficient to establish an acceptable degree of geological and grade continuity and is appropriate for both the mineral resource estimation and the resource classifications applied.</p>
<i>Orientation of data in relation to geological structure</i>	<p><i>Whether the orientation of sampling achieves unbiased sampling of possible structures and the extent to which this is known, considering the deposit type.</i></p> <p><i>If the relationship between the drilling orientation and the orientation of key mineralised structures is considered to have introduced a sampling bias, this should be assessed and reported if material.</i></p>	<p>The Cardinia greenstone sequence displays a NNW to NW trend. Drilling and sampling programs were carried out to obtain unbiased locations of drill sample data, generally orthogonal to the strike of mineralisation.</p> <p>At Helens mineralisation is structurally controlled in sub-vertical shear zones, with supergene components of varying lateral extensiveness present in the oxide profile.</p> <p>The vast majority of historical drilling, pre-Navigator (pre-2004), and KIN drilling is orientated at -60°/245° (WSW) and -60°/065° (ENE).</p> <p>At Bruno-Lewis and Kyte, mineralisation is either stratigraphy parallel (trending NNW, steep to moderately W-dipping) or cross-cutting and dipping shallowly to the NE (striking NW). The vast majority of the drilling is therefore predominantly orientated at -60°/225-250° or -60°/090°. Grade Control drillholes were drilled vertically. Since late 2018, Kin's drilling has been largely orientated to 070° to target contact lodes and 225-250° to target the NE-dipping potassic lodes.</p> <p>The chance of sample bias introduced by sample orientation is considered minimal. No orientation sampling bias has been identified in data thus far.</p>
<i>Sample security</i>	<p><i>The measures taken to ensure sample security.</i></p>	<p>No sample security details are available for pre-Navigator (pre-2004) drill or field samples.</p> <p>Navigator drill samples (2004-2014) were collected in pre-numbered calico bags at the drill rig site. Samples were then collected by company personnel from the field and transported to the secure Navigator yard in Leonora. Samples were then batch processed (drillhole and sample numbers logged into the database) and then packed into 'bulkabag sacks'. The bulkabags were tied off and stored securely in the Navigator yard until being transported to the selected laboratory. There was no perceived opportunity for the samples to be compromised from collection of samples at the drill site to delivery to the laboratory.</p> <p>2017 -18 KIN RC drill samples were collected in pre-numbered calico bags at the drill rig site. The</p>

Criteria	• JORC Code explanation	Commentary
		<p>samples were then batch processed (drillhole and sample numbers encoded onto a hardcopy sample register) in the field, and then transported and stacked into 'bulkabag sacks' at the secure KIN yard location in Leonora. Bulkabags were tied off and stored securely in the yard until being transported to the laboratory.</p> <p>2019-20 RC drill samples were collected in pre-numbered calico bags at the drill rig site. The samples were then batch processed (drillhole and sample numbers encoded onto a hardcopy sample register) in the field, and then transported and stacked into 'bulkabag sacks' at the Cardinia office.</p> <p>2017-18 KIN DD samples were obtained by KIN personnel in pre-numbered calico bags at the KIN yard location in Leonora. Samples were then stacked into 'bulkabag sacks' at the yard location and stored securely until being transported to the laboratory.</p> <p>2019-20 samples were obtained by KIN personnel in pre-numbered calico bags at the core yard located at the Cardinia office. Samples were then stacked into 'bulkabag sacks' at the yard location and stored securely until being transported to the laboratory.</p> <p>Both transport contractors and KIN personnel are utilised to transport samples to the laboratory. No perceived opportunity for samples to be compromised from collection of samples at the drill site, to delivery to the laboratory, where they were stored in their secure compound, and made ready for processing is deemed likely to have occurred.</p> <p>On receipt of the samples, the laboratory independently checked the sample submission form to verify samples received and readied the samples for sample preparation. SGS and Genalysis sample security protocols are of industry standard and deemed acceptable for resource estimation work.</p>
<i>Audits or reviews</i>	<i>The results of any audits or reviews of sampling techniques and data.</i>	<p>Historic drilling and sampling methods and QA/QC are regarded as not being as thoroughly documented compared to current standards. In house reviews of various available historical company reports of drilling and sampling techniques indicates that these were most likely conducted to industry best practice and standards of the day.</p> <p>Independent geological consultants Runge Ltd completed a review of the Cardinia Project database, drilling and sampling protocols, and so forth in 2009. The Runge report highlighted issues with bulk density and QA/QC analysis within the supplied database. Identified issues were subsequently addressed by Navigator and KIN.</p> <p>Carras Mining Pty Ltd (CM), an independent geological consultant, reviewed and carried out an audit on the field operations and database in 2017. Drilling and sampling methodologies observed during the site visits were to industry standard. No issues were identified for the supplied databases which could be considered material to a mineral resource estimation. During the review, Carras Mining logged the oxidation profiles (base of complete oxidation and top of fresh rock) for each of the deposit areas, based on visual inspection of selected RC drill chips from KIN's recent drilling programs, and a combination of historical and KIN drillhole logging. Final adjustments were made</p>

Criteria	• JORC Code explanation	Commentary
		<p>with input from KIN geologists. The oxidation profiles were used to assign bulk densities and metallurgical recoveries to the 2017 resource models.</p> <p>Past bulk density test work has been inconsistent with incorrect methods employed, to derive specific gravity or in-situ bulk density, rather than dry bulk density. Navigator (2009) and recent KIN (2017) bulk density test work was carried out using the water immersion method on oven dried, coated samples to derive dry bulk densities for different rock types and oxidation profiles. This information has been incorporated into the database for resource estimation work. CM conducted site visits during 2017 to the laboratory to validate the methodology.</p> <p>Drilling, sampling methodologies, and assay techniques used in these drilling programs are considered to be appropriate and to mineral exploration industry standards of the day.</p> <p>Laboratory site visits and audits were introduced in April 2018 and are conducted on an annual basis. This measure ensures that all aspects of KIN QAQC practices are adhered to and align with industry best practice.</p>

Cardinia

Section 2 Reporting of Exploration Results

(Criteria listed in the preceding section also apply to this section.)

Criteria	• JORC Code explanation	Commentary
<p><i>Mineral tenement and land tenure status</i></p>	<p><i>Type, reference name/number, location and ownership including agreements or material issues with third parties such as joint ventures, partnerships, overriding royalties, native title interests, historical sites, wilderness or national park and environmental settings.</i></p> <p><i>The security of the tenure held at the time of reporting along with any known impediments to obtaining a licence to operate in the area.</i></p>	<p>The Cardinia Project, 35-40km NE of Leonora is managed, explored and maintained by KIN, and constitute a portion of KIN's Cardinia Gold Project (CGP), which is located within the Shire of Leonora in the Mt Margaret Mineral Field of the North Eastern Goldfields.</p> <p>The Helens and Rangoon area includes granted mining tenements M37/316 and M37/317, The tenements are held in the name of Navigator Mining Pty Ltd, a wholly owned subsidiary of KIN.</p> <p>The Bruno-Lewis and Kyte areas includes granted mining tenements M37/86, M37/227, M37/277, M37/300, M37/428 and M37/646. The tenements are held in the name of Navigator Mining Pty Ltd, a wholly owned subsidiary of KIN. The following royalty payment may be applicable to the areas within the Cardinia Project's Bruno and Lewis areas that comprise the deposits being reported on:</p> <ol style="list-style-type: none"> 1. Gloucester Coal Ltd (formerly CIM Resources Ltd and Centenary International Mining Ltd) in respect of M37/86 - 1% of the quarterly gross value of sales for gold ounces produced, in excess of 10,000 ounces. <p>There are no known native title interests, historical sites, wilderness areas, national park or environmental impediments over the outlined current resource areas, and there are no current impediments to obtaining a licence to operate in the area.</p>
<p><i>Exploration done by other parties</i></p>	<p><i>Acknowledgment and appraisal of exploration by other parties.</i></p>	<p>At Cardinia, from 1980-1985, Townson Holdings Pty Ltd ("Townson") mined a small open pit over selected historical workings at the Rangoon prospect. Localised instances of drilling relating to this mining event are not recorded and are considered insubstantial and immaterial for resource modelling.. Companies involved in the collection of the majority of the gold exploration data since 1985 and prior to 2014 include: Thames Mining NL ("Thames") 1985; Mt Eden Gold Mines (Aust) NL (also Tarmoola Aust Pty Ltd "MEGM") 1986-2003; Centenary International Mining Ltd ("CIM") 1986-1988, 1991-1992; Metana Minerals NL ("Metana") 1986-1989; Sons of Gwalia Ltd ("SOG") 1989, 1992-2004; Pacmin Mining Corporation ("Pacmin") 1998-2001, and Navigator Resources Ltd ("Navigator") 2004-2014.</p> <p>In 2009 Navigator commissioned Runge Limited ("Runge") to complete a Mineral Resource estimate for the Bruno, Lewis, Kyte, Helens and Rangoon deposits. Runge reported a JORC 2004 compliant Mineral Resource estimate, at a cut-off grade of 0.7g/t Au, totaling 1.45Mt @ 1.3 g/t au (61,700 oz Au) for Helens and Rangoon, and totaling 4.34Mt @ 1.2 g/t au (169,700 oz Au) for Bruno, Lewis and Kyte.</p>

Criteria	• JORC Code explanation	Commentary
		<p>A trial pit (Bruno) was mined by Navigator in 2010, and a ‘test parcel’ of ore was extracted and transported firstly to Sons of Gwalia’s processing plant in Leonora, and finally to Navigator’s processing plant located at Bronzewing, where approximately 100,000 tonnes were processed at an average head grade of 2.33 g/t au (7,493 oz Au).</p>
Geology	<p><i>Deposit type, geological setting and style of mineralisation.</i></p>	<p>The Cardinia Project area is located in the central part of the Norseman-Wiluna Greenstone Belt, which extends for some 600km on a NNW trend across the Archean Yilgarn Craton of Western Australia.</p> <p>The regional geology comprises a suite of NNE-North trending greenstones positioned within the Mertondale Shear Zone (MSZ) a splay limb of the Kilkenny Lineament. The MSZ denotes the contact between Archaean felsic volcanoclastics and sediment sequences in the west and Archaean mafic volcanics in the east. Proterozoic dolerite dykes and Archaean felsic porphyries have intruded the sheared mafic/felsic volcanoclastic/sedimentary sequence.</p> <p>Locally within the Cardinia Project area, the stratigraphy consists of intermediate, mafic and felsic volcanic and intrusive lithologies and locally derived epiclastic sediments, which strike NNW, dipping steep-to-moderately to the west. Structural foliation of the areas stratigraphy predominantly dips steeply to the east but localised inflections are common and structural orientation can vary between moderately (50-75°) easterly to moderately westerly dipping.</p> <p>Mineralisation at Helens is controlled by a cross-cutting fault, hosted predominantly in mafic rock units, adjacent to the felsic volcanic/sediment contacts. The ore zones are associated with increased shearing, intense alteration and disseminated sulphides. Minor supergene enrichment occurs locally within mineralised shears throughout the regolith profile.</p> <p>Mineralisation at Bruno-Lewis is largely controlled by the stratigraphic contact between basalt and felsic volcanics. Gold is associated with significant sulphide mineralisation in the sediments and volcanoclastics between the 2 volcanic units. Gold is also hosted within shallowly NE-dipping lodes, associated with increased potassic-sericite alteration and quartz stockwork veining. These lodes also host the mineralisation at Kyte. Substantial supergene mineralisation sits above both styles of mineralisation.</p>
Drill hole Information	<p><i>A summary of all information material to the understanding of the exploration results including a tabulation of the following information for all Material drill holes:</i></p> <ul style="list-style-type: none"> • <i>easting and northing of the drill hole collar</i> • <i>elevation or RL (Reduced Level – elevation above sea level in metres) of the drill hole collar</i> • <i>dip and azimuth of the hole</i> • <i>down hole length and interception depth</i> 	<p>Material drilling information for exploration results has previously been publicly reported in numerous announcements to the ASX by Navigator (2004-2014) and KIN since 2014.</p>

Criteria	• JORC Code explanation	Commentary
	<ul style="list-style-type: none"> hole length. <p>If the exclusion of this information is justified on the basis that the information is not Material and this exclusion does not detract from the understanding of the report, the Competent Person should clearly explain why this is the case.</p>	
Data aggregation methods	<p>In reporting Exploration Results, weighting averaging techniques, maximum and/or minimum grade truncations (eg cutting of high grades) and cut-off grades are usually Material and should be stated.</p> <p>Where aggregate intercepts incorporate short lengths of high grade results and longer lengths of low grade results, the procedure used for such aggregation should be stated and some typical examples of such aggregations should be shown in detail.</p> <p>The assumptions used for any reporting of metal equivalent values should be clearly stated.</p>	<p>When exploration results have been reported for the resource areas, the intercepts are reported as weighted average grades over intercept lengths defined by geology or lower cut-off grades, without high grade cuts applied. Where aggregate intercepts incorporated short lengths of high grade results, these results were included in the reports.</p> <p>Since 2014, KIN have reported RC drilling intersections with low cut off grades of ≥ 0.5 g/t Au and a maximum of 2m of internal dilution at a grade of <0.5g/t Au.</p> <p>There is no reporting of metal equivalent values.</p>
Relationship between mineralisation widths and intercept lengths	<p>These relationships are particularly important in the reporting of Exploration Results.</p> <p>If the geometry of the mineralisation with respect to the drill hole angle is known, its nature should be reported.</p> <p>If it is not known and only the down hole lengths are reported, there should be a clear statement to this effect (eg 'down hole length, true width not known').</p>	<p>The orientation, true width, and geometry of mineralised zones have been primarily determined by interpretation of historical drilling and continued investigation and verification of KIN drilling.</p> <p>Drill intercepts are reported as downhole widths not true widths.</p> <p>Accompanying dialogue to reported intersections normally describes the attitude of mineralisation.</p>
Diagrams	<p>Appropriate maps and sections (with scales) and tabulations of intercepts should be included for any significant discovery being reported. These should include, but not be limited to a plan view of drill hole collar locations and appropriate sectional views.</p>	<p>Appropriate maps and sections are included in the main body of this report.</p>
Balanced reporting	<p>Where comprehensive reporting of all Exploration Results is not practicable, representative reporting of both low and high grades and/or widths should be practiced to avoid misleading reporting of Exploration Results.</p>	<p>Public reporting of exploration results by KIN and past tenement holders and explorers for the resource areas are considered balanced.</p> <p>Representative widths typically included a combination of both low and high grade assay results.</p> <p>All meaningful and material information relating to this mineral resource estimate is or has been previously reported.</p>
Other substantive exploration data	<p>Other exploration data, if meaningful and material, should be reported including (but not limited to): geological observations; geophysical survey results; geochemical survey results; bulk</p>	<p>Since 2018, a campaign of determining Bulk Densities has been undertaken. The water displacement method is used on drill samples selected by the logging geologist. These measurements are entered into the logging software interface and loaded to the Datashed</p>

Criteria	JORC Code explanation	Commentary
	<ul style="list-style-type: none"> • <i>samples – size and method of treatment; metallurgical test results; bulk density, groundwater, geotechnical and rock characteristics; potential deleterious or contaminating substances.</i> 	database.
<i>Further work</i>	<p><i>The nature and scale of planned further work (eg tests for lateral extensions or depth extensions or large-scale step-out drilling).</i></p> <p><i>Diagrams clearly highlighting the areas of possible extensions, including the main geological interpretations and future drilling areas, provided this information is not commercially sensitive.</i></p>	KIN intend to continue exploration and drilling activities at in the described area, with the intention to increase the project’s resources.

Raeside

Section 2 Reporting of Exploration Results

(Criteria listed in the preceding section also apply to this section.)

Criteria	JORC Code explanation	Commentary
<i>Mineral tenement and land tenure status</i>	<p><i>Type, reference name/number, location and ownership including agreements or material issues with third parties such as joint ventures, partnerships, overriding royalties, native title interests, historical sites, wilderness or national park and environmental settings.</i></p> <p><i>The security of the tenure held at the time of reporting along with any known impediments to obtaining a licence to operate in the area.</i></p>	<p>The Raeside Project area includes granted mining tenement M37/1298, centered some 10km ESE of Leonora. The tenements are held in the name of Navigator Mining Pty Ltd, a wholly owned subsidiary of KIN. The Raeside Project is managed, explored and maintained by KIN, and constitute a portion of KIN’s Leonora Gold Project (LGP), which is located within the Shire of Leonora in the Mt Margaret Mineral Field of the North Eastern Goldfields.</p> <p>The following royalty payment may be applicable to the areas within the Raeside Project that comprise the deposits being reported on:</p> <ul style="list-style-type: none"> • Messer’s Blitterswyk, Halloran & Prugnoli, in respect of dead mineral tenements M37/256, M37/369, M37/377, M37/379, P37/4046 and MLA37/563, which are partly or wholly overlain by M37/1298 - \$1.00 per tonne of ore mined and milled for the extraction of gold or other saleable mineral. <p>There are no known native title interests, historical sites, wilderness areas, national park or environmental impediments over the resource areas, and there are no current impediments to obtaining a licence to operate in the area.</p>
<i>Exploration done by other parties</i>	<i>Acknowledgment and appraisal of exploration by other parties.</i>	Gold was first discovered in the Leonora district about 1896 and it is likely that the first prospecting activity in and around the Raeside Project area would have occurred at about that time. Initial production from Raeside was a small underground operation in the early 1970’s when 60t @ 6.0 g/t Au was produced.

Criteria	• JORC Code explanation	Commentary
		<p>In 1989, Triton Resources Limited (Triton) entered into an arrangement with local prospectors (Halloran and Prugnoli) to acquire some tenements in what is known as the Forgotten Four area. The Triton Raeside Joint Venture mined the Forgotten Four (1990-1992) to 45m depth. Production statistics include:</p> <p>1990: Mined and processed 6,280t @ 5.18 g/t Au (959oz) at the Tower Hill plant in Leonora with 91.7% recovery. 1992: Mined and processed 40,537t @ 4.14 g/t Au (4,993oz) at the Harbour Lights plant in Leonora with 92.57% recovery. Finally a 2,822t parcel of ore (4.47 g/t Au) (389oz) was sold to Harbour Lights. In 1992 remnant ore from low grade stockpiles totaling 6,200t @ 1.0 g/t Au (199oz) was processed. Thus total production from the nearby Forgotten Four open cut yielded 55,839t @ 3.92 g/t Au (7,030oz) with an estimated recovery of approximately 92%. None of the reported production figures have been confirmed from official Mines Department records.</p> <p>The larger Raeside Project originated in 1992, when Triton (70%) formed a joint venture with Sabre Resources N.L. (Sabre) (20%) and Copperwell Pty Ltd (Copperwell), a subsidiary of Cityview Energy Corporation (10%). The three companies amalgamated their tenement holdings in the area and the joint venture applied for additional tenements.</p> <p>Until sometime in 1994 the project was managed on behalf of the joint venture by Westchester Pty Ltd. Incomplete drilling records indicate that Westchester had been involved to some extent in managing exploration in the area for Triton prior to 1992. After mid-1994 Triton appears to have taken over as project manager.</p> <p>Before 1995, drilling programs were apparently dominated by first-pass rotary air blast (RAB) drilling, with local reverse circulation (RC) rotary or percussion drilling to follow up in places where mineralisation was detected. Because of RAB drilling difficulties (clays and water) air core (AC) drilling was subsequently adopted as the first-pass method.</p> <p>Triton's drilling programs were suspended in June 1995 while a major review of results was undertaken and a pre-feasibility study was conducted. Drilling resumed in about April 1995.</p> <p>Another economic evaluation of the project was undertaken by Triton in 1998-1999 which indicated that a stand-alone operation was not possible, but that the project could be viable as a supplementary feed source for an existing, nearby process plant.</p> <p>SOG farmed in to the project in January 2000 and subsequently acquired full ownership. They carried out limited amounts of predominantly RC drilling, aimed mainly at confirming previous results from the Michelangelo deposit.</p> <p>Navigator Resources Ltd (Navigator) acquired the Raeside project from SOG in September 2004. Subsequent work by Navigator has focused mainly on other projects in the Leonora district, with only very small amounts of additional drilling having been completed in the Raeside area.</p>

Criteria	• JORC Code explanation	Commentary
		<p>In 2009, Navigator commissioned MS to complete a Mineral Resource estimate for the Raeside deposits. MS reported a JORC 2004 compliant Indicated Mineral Resource estimate, at a low cutoff grade of 0.7g/t Au, totaling 1.28Mt @ 2.68 g/t Au (111,000oz).</p> <p>KIN acquired the Raeside Project from Navigator’s administrator in 2014.</p>
<p>Geology</p>	<p><i>Deposit type, geological setting and style of mineralisation.</i></p>	<p>The Raeside Project area is located 10km ESE of Leonora in the central part of the Norseman-Wiluna Greenstone Belt, which extends for some 600km on a NNW trend across the Archean Yilgarn Craton of Western Australia.</p> <p>The regional geology comprises a sequence of Archaean greenstone lithologies. The area is underlain by very poorly exposed rocks units. The gold deposits at Raeside occur within or close to the margins of a large NW (320°) trendy body of dolerite within a sequence of sediments and volcanoclastic rocks near the southern margin of porphyry intrusive. Most of the gold recovered from mining the nearby Forgotten Four mine was from shear bound quartz vein stockworks or sheeted veins and/or quartz carbonate veins within a narrow carbonaceous shale (dipping 40°-60° East) lying within a granophyric quartz dolerite and carbonate/sericite/sulphide altered wall rocks.</p> <p>Gold mineralisation at Michelangelo is hosted by a uniform metamorphosed medium grained dolerite. The deposit occurs on or above the basal sheared contact of the quartz dolerite. Four or five extensive quartz vein structures dip at 30°-40° to the northeast, extending over a strike length of 575m with a total stratigraphic thickness of approximately 90m. The position of the footwall has been roughly delineated however no other convincing geological boundaries are defined.</p> <p>Gold mineralisation at Leonardo occurs mainly in a partly carbonaceous-graphitic shale (coded as generic metasediment) close to/adjacent to but above the quartz mafic contact. The mineralisation dips 35°-50° to the east however this ore body exhibits significant differences to the other deposits. Initially the mineralisation at Leonardo is hosted in sedimentary rocks above the quartz diorite. Secondly the mineralisation is associated with a zone of strong bleaching, sericitisation and silicification, often up to +20m wide. The strike length of the steeply plunging north main shoot is approximately 60m. Thirdly the gold mineralisation occurs within a relatively linear shear zone that is traceable over 2km of strike; the shear contains significant mineralisation in at least three other locations along strike.</p> <p>Mineralised zones at Forgotten Four are mainly hosted by mafics however the uppermost (strongest) zone of mineralisation appears to be positioned just below the lower contact of overlying sediments, and one of the lower zones appear to coincide with a sporadically developed sediment wedge in the mafic rocks. The sediments are also mineralised. At the Forgotten Four the strongest zone of mineralisation is just below the lower contact with the overlying carbonaceous shale and sediments. The bulk of the mineralisation is hosted by dolerite</p>

Criteria	• JORC Code explanation	Commentary
		<p>along the upper contact with the interbedded shale and the quartz diorite. There are at least two lodes at Forgotten Four, one of which was partly mined by Triton (55,839t @ 3.92 g/t Au for 7,030oz Au) the second lode occurs in the hanging wall to the south.</p> <p>Mineralisation at Krang appears to be broadly related to the metasediments however, once again, no convincing geological boundaries are defined. Along the eastern side of the deposit mineralisation appears to be broadly associated with the contact zones between mafic and metasedimentary units. Some of the mineralisation is associated with massive quartz-pyrite-arsenopyrite lodes which display high but erratic grade. Gold mineralisation occurs internal to the quartz dolerite unit which displays varying dips ranging from 30° to 60° to the northeast; interpretation suggests two different structural styles. Mineralisation occurs in at least four separate pods over a continuous strike length of about 700m.</p>
Drill hole Information	<p><i>A summary of all information material to the understanding of the exploration results including a tabulation of the following information for all Material drill holes:</i></p> <ul style="list-style-type: none"> • <i>easting and northing of the drill hole collar</i> • <i>elevation or RL (Reduced Level – elevation above sea level in metres) of the drill hole collar</i> • <i>dip and azimuth of the hole</i> • <i>down hole length and interception depth</i> • <i>hole length.</i> <p><i>If the exclusion of this information is justified on the basis that the information is not Material and this exclusion does not detract from the understanding of the report, the Competent Person should clearly explain why this is the case.</i></p>	<p>Material drilling information for exploration results has previously been publicly reported in numerous announcements to the ASX by Navigator (2004-2014) and KIN since 2014.</p>
Data aggregation methods	<p><i>In reporting Exploration Results, weighting averaging techniques, maximum and/or minimum grade truncations (eg cutting of high grades) and cut-off grades are usually Material and should be stated.</i></p> <p><i>Where aggregate intercepts incorporate short lengths of high grade results and longer lengths of low grade results, the procedure used for such aggregation should be stated and some typical examples of such aggregations should be shown in detail.</i></p> <p><i>The assumptions used for any reporting of metal equivalent values should be clearly stated.</i></p>	<p>When exploration results have been reported for the resource areas, the intercepts are reported as weighted average grades over intercept lengths defined by geology or lower cut-off grades, without high grade cuts applied. Where aggregate intercepts incorporated short lengths of high grade results, these results were included in the reports.</p> <p>Since 2014, KIN have reported RC drilling intersections with low cut off grades of ≥ 0.5 g/t Au and a maximum of 2m of internal dilution at a grade of <0.5g/t Au.</p> <p>There is no reporting of metal equivalent values.</p>
Relationship between	<i>These relationships are particularly important in the reporting</i>	The orientation, true width and geometry of the mineralised zones have been determined by

Criteria	• JORC Code explanation	Commentary
<i>mineralisation widths and intercept lengths</i>	<p><i>of Exploration Results.</i></p> <p><i>If the geometry of the mineralisation with respect to the drill hole angle is known, its nature should be reported.</i></p> <p><i>If it is not known and only the down hole lengths are reported, there should be a clear statement to this effect (eg ‘down hole length, true width not known’).</i></p>	<p>interpretation of historical drilling and verified by KIN’s drilling. The majority of historic drill holes within the pit area are inclined at -60° towards 280° (west). Later drilling was undertaken on the Raeside local grid, with a base line orientated to 330° (north west). The KIN RC drilling is orientated towards 225° (SW), which is regarded as the optimum orientation to intersect the target mineralisation. Since the mineralisation is moderately dipping (-40° to -60° easterly), drill intercepts are reported as downhole widths, not true widths. Accompanying dialogue to reported intersections normally describe the attitude of the mineralisation.</p>
<i>Diagrams</i>	<p><i>Appropriate maps and sections (with scales) and tabulations of intercepts should be included for any significant discovery being reported These should include, but not be limited to a plan view of drill hole collar locations and appropriate sectional views.</i></p>	<p>Appropriate maps and sections are included in the main body of this report.</p>
<i>Balanced reporting</i>	<p><i>Where comprehensive reporting of all Exploration Results is not practicable, representative reporting of both low and high grades and/or widths should be practiced to avoid misleading reporting of Exploration Results.</i></p>	<p>Public reporting of exploration results by KIN and past tenement holders and explorers for the resource areas are considered balanced.</p> <p>Representative widths typically included a combination of both low and high grade assay results. All meaningful and material information relating to this mineral resource estimate is or has been previously reported.</p>
<i>Other substantive exploration data</i>	<p><i>Other exploration data, if meaningful and material, should be reported including (but not limited to): geological observations; geophysical survey results; geochemical survey results; bulk samples – size and method of treatment; metallurgical test results; bulk density, groundwater, geotechnical and rock characteristics; potential deleterious or contaminating substances.</i></p>	<p>Since 2018, a campaign of determining Bulk Densities has been undertaken. The water displacement method is used on drill samples selected by the logging geologist. These measurements are entered into the logging software interface and loaded to the Datashed database.</p>
<i>Further work</i>	<p><i>The nature and scale of planned further work (eg tests for lateral extensions or depth extensions or large-scale step-out drilling).</i></p> <p><i>Diagrams clearly highlighting the areas of possible extensions, including the main geological interpretations and future drilling areas, provided this information is not commercially sensitive.</i></p>	<p>KIN intend to continue exploration and drilling activities at in the described area, with the intention to increase the project’s resources.</p>

Rangoon

Section 3 Estimation and Reporting of Mineral Resources

(Criteria listed in section 1, and where relevant in section 2, also apply to this section.)

Criteria	JORC Code explanation	Commentary
<i>Database integrity</i>	<p>Measures taken to ensure that data has not been corrupted by, for example, transcription or keying errors, between its initial collection and its use for Mineral Resource estimation purposes.</p> <p>Data validation procedures used.</p>	<p>Data is collected in the field on propriety software, which contains inbuilt validation steps. (Example overlapping intervals, data duplication).</p> <p>Data is then uploaded into Maxwells Datashed application by the Database Administrator (DBA). This application includes quality protocols which must be met in order for uploading to occur (examples: data duplication, validation of geological field)</p> <p>Returned assay results are loaded electronically in CSV format into Datashed, by either the DBA, or the Senior Geologists. This includes a review of QC results.</p> <p>Finally, the data is reviewed upon upload to Datamine Studio RM before final use. (Examples: DHsurveys present, overlapping intervals, 'From' and 'To's concurrent).</p> <p>Historic data does not contain sufficient metadata for thorough validation protocols, however, compares well with recent QAQC controlled data.</p>
<i>Site visits</i>	<p>Comment on any site visits undertaken by the Competent Person and the outcome of those visits.</p> <p>If no site visits have been undertaken indicate why this is the case.</p>	<p>KIN's geological team have an onsite presence which includes supervision and management of drill programs within each of the resource areas.</p> <ul style="list-style-type: none"> Mr Jamie Logan of Palaris conducted a formal site visit during September 2022, visiting Cardinia and the Rangoon deposit specifically
<i>Geological interpretation</i>	<p>Confidence in (or conversely, the uncertainty of) the geological interpretation of the mineral deposit.</p> <p>Nature of the data used and of any assumptions made</p> <p>The effect, if any, of alternative interpretations on Mineral Resource estimation.</p> <p>The use of geology in guiding and controlling Mineral Resource estimation.</p> <p>The factors affecting continuity both of grade and geology.</p>	<p>Confidence in the interpretation is directly reflected in the classification.</p> <p>Lithological, structural, alteration and grade information were used to determine this interpretation.</p> <p>Alternate interpretations have been considered; however, the current interpretation is considered robust, and conforms to the observed controls.</p> <p>The interpretation is directly based on geological and structural observations. A Categorical Indicator approach (grade) was used to define mineralised domains at 0.4g/t and 1g/t based on observed grade distributions. Dynamic anisotropy (geology and structure) was used to direct and guide the categorical indicator.</p> <p>Continuity is structurally controlled with a stratigraphic component also present. Mineralising fluid flowed through the system, concordantly along stratigraphy and discordantly to stratigraphy along extensive local structures</p>

Criteria	• JORC Code explanation	Commentary
<i>Dimensions</i>	<i>The extent and variability of the Mineral Resource expressed as length (along strike or otherwise), plan width, and depth below surface to the upper and lower limits of the Mineral Resource.</i>	The Rangoon Mineral Resource estimate covers part of the Helens-Rangoon system. It strikes for approximately 1.4km, to a depth of 250m, with an average thickness of 5m.
<i>Estimation and modelling techniques</i>	<p><i>The nature and appropriateness of the estimation technique(s) applied and key assumptions, including treatment of extreme grade values, domaining, interpolation parameters and maximum distance of extrapolation from data points. If a computer assisted estimation method was chosen include a description of computer software and parameters used.</i></p> <p><i>The availability of check estimates, previous estimates and/or mine production records and whether the Mineral Resource estimate takes appropriate account of such data.</i></p> <p><i>The assumptions made regarding recovery of by-products.</i></p> <p><i>Estimation of deleterious elements or other non-grade variables of economic significance (eg sulphur for acid mine drainage characterisation).</i></p> <p><i>In the case of block model interpolation, the block size in relation to the average sample spacing and the search employed.</i></p>	<p>Only Diamond and RC drilling included.</p> <p>Mineralised domains created using categorical indicators at 0.4g/t and 1g/t. These then converted into wireframes using a threshold of 0.45, which was selected after extensive visual review.</p> <p>Drillholes composited to 1m, which is based on the majority of samples being 1m or below. Comparison of Diamond and RC lengths conducted to support this decision. All lengths retained and any residuals redistributed evenly within domains.</p> <p>Individual domains assessed for capping, using multiple methods including reviewing population gaps and Coefficient of Variation (CV). Capping effect is not believed to be material. Caps range from 2.5g/t to 15g/t.</p> <p>Variography undertaken on domains with sufficient samples.</p> <p>Kriging neighborhood analysis (KNA) reviewed in order to determine optimal block sizes and estimation parameters.</p> <p>Parent cells of 6 mE x 6 mN x 4 mRL estimated using Ordinary Kriging.</p> <p>Search distances and directions aligned with maximum variogram ranges and rotations; however dynamic anisotropy utilised for local directions.</p> <p>The estimate was compared to the previous estimate, to understand changes, as well as inverse distance squared, and nearest neighbor estimates run concurrently.</p> <p>No assumptions were made regarding recovery of by-products.</p> <p>No deleterious elements were estimated.</p> <p>Nominal Drill spacing of 10 m x 10 m in well informed areas led to parent cells of 6mE x 6mN x 4mRL used. Review of KNA in informed areas and under-informed areas concur. Sub-celling to 1 mE x 1 mN x 1 mRL for effective filling of domain wireframes</p>

Criteria	• JORC Code explanation	Commentary
	<p><i>Any assumptions behind modelling of selective mining units.</i></p> <p><i>Any assumptions about correlation between variables.</i></p> <p><i>Description of how the geological interpretation was used to control the resource estimates.</i></p> <p><i>The process of validation, the checking process used, the comparison of model data to drill hole data, and use of reconciliation data if available.</i></p>	<p>No assumptions were made with respect to selective mining units.</p> <p>No assumptions were made on the correlation between variables.</p> <p>Lodes are modeled to represent material mineralised by fluid flow through planar structural and/or stratigraphic features. The mineralised domains act as hard boundaries to control the gold interpolation.</p> <p>Model validation is a combined review including:</p> <ul style="list-style-type: none"> • Visual review of blocks against composite values, by section and plan • Review of global mean values and understanding variances to composites • Review of local means against composite means by way of swath plots <p>No reconciliation data are available as the deposit has not yet been mined</p>
Moisture	<p><i>Whether the tonnages are estimated on a dry basis or with natural moisture, and the method of determination of the moisture content.</i></p>	<p>Tonnages estimated on a dry basis only. Moisture was not considered in the density assignment</p>
Cut-off parameters	<p><i>The basis of the adopted cut-off grade(s) or quality parameters applied.</i></p>	<p><u>Open Pit</u> The lower cut-off gold grade for reporting mineral resources was 0.4 g/t Au. This was determined by KIN's management to be appropriate with a gold price of \$2600 AUD per ounce and based on reasonable operating costs.</p> <p><u>Underground</u> A lower cut-off gold grade for reporting potential underground mineral resources was 2.0g/t Au. This was determined by KIN's management to be appropriate for eventual economic extraction via underground extraction.</p>
Mining factors or assumptions	<p><i>Assumptions made regarding possible mining methods, minimum mining dimensions and internal (or, if applicable, external) mining dilution. It is always necessary as part of the process of determining reasonable prospects for eventual economic extraction to consider potential mining methods, but the assumptions made regarding mining methods and parameters when estimating Mineral Resources may not always be rigorous. Where this is the case, this should be reported with an explanation of the basis of the mining assumptions made.</i></p>	<p>No mining method assumptions were made for the estimation of this model.</p> <p>Assumptions were made for open pit mine design and pit optimisation used to constrain the Mineral Resource for reporting. These are consistent with previous updates.</p> <p>No assumptions were made for an underground mining optimisation. No stope optimisation study was undertaken or assumptions on the method of underground mining.</p>

Criteria	• JORC Code explanation	Commentary				
					Unit	2020 December Update
		Revenue Assumptions	Gold Price		\$/t ore	\$2,600
			Revenue		\$/g	\$83.59
		Mining Cost Assumptions	Mining Dilution		%	0%
			Mining Recovery		%	100%
			Mining Cost		\$/bcm	Calculated
		Processing Recovery and Cost Assumptions	Recovery	Oxide	%	95%
			Trans			95%
			Fresh			95%
			Processing Cost	Oxide	\$/t ore	\$14.00
			Trans			\$16.50
		Fresh			\$20.00	
		Haulage		\$/t ore	Not Calculated	
		G & A Cost		\$/t ore	\$2.09	
		Geotechnical Assumptions	Oxide		deg	50
			Transitional		deg	60
			Fresh		deg	65
Metallurgical factors or assumptions	<i>The basis for assumptions or predictions regarding metallurgical amenability. It is always necessary as part of the process of determining reasonable prospects for eventual economic extraction to consider potential metallurgical methods, but the assumptions regarding metallurgical treatment processes and parameters made when reporting Mineral Resources may not always be rigorous. Where this is the case, this should be reported with an explanation of the basis of the metallurgical assumptions made.</i>	No Metallurgical assumptions were made for the estimation of this model. Processing recoveries of 95% assumed for all material types.				
Environmental factors or assumptions	<i>Assumptions made regarding possible waste and process residue disposal options. It is always necessary as part of the process of determining reasonable prospects for eventual economic extraction to consider the potential environmental impacts of the mining and processing operation. While at this stage the determination of potential environmental impacts, particularly for a greenfields project, may not always be well advanced, the status of early consideration of these potential environmental impacts should be reported. Where these aspects have not been</i>	No environmental assumptions have been made for the estimation of this model.				

Criteria	• JORC Code explanation	Commentary
<p><i>Bulk density</i></p>	<p><i>considered this should be reported with an explanation of the environmental assumptions made.</i></p> <p><i>Whether assumed or determined. If assumed, the basis for the assumptions. If determined, the method used, whether wet or dry, the frequency of the measurements, the nature, size and representativeness of the samples.</i></p> <p><i>The bulk density for bulk material must have been measured by methods that adequately account for void spaces (vugs, porosity, etc), moisture and differences between rock and alteration zones within the deposit.</i></p> <p><i>Discuss assumptions for bulk density estimates used in the evaluation process of the different materials.</i></p>	<p>The previous model used assumed bulk densities derived from the Helens deposit. Since then, several diamond drillholes have been drilled from which bulk density measurements have been taken.</p> <p>Water displacement method was used on samples selected by the logging geologist. These measurements are input to the logging software interface and loaded to the Datashed database.</p> <p>Previous work considered void spaces and were sealed prior to the wet measurement. For the more recent work, all measurements have been on fresh rock, where vugs and voids are absent.</p> <p>The average bulk density assigned for the September 2022 MRE is as follows:</p> <ul style="list-style-type: none"> • Transported = 2.11 • Oxide = 2.35 • Transition = 2.75
<p><i>Classification</i></p>	<p><i>The basis for the classification of the Mineral Resources into varying confidence categories.</i></p> <p><i>Whether appropriate account has been taken of all relevant factors (ie relative confidence in tonnage/grade estimations, reliability of input data, confidence in continuity of geology and metal values, quality, quantity and distribution of the data.</i></p> <p><i>Whether the result appropriately reflects the</i></p>	<p>Classification is based on a combination of drill-spacing, geological confidence and estimation quality. The classification is applied to the model on a lode-by-lode basis. Drill-spacing listed below are indicative only.</p> <ul style="list-style-type: none"> • Indicated: Up to 30 m x 30 m in areas of strong geological and grade continuity • Inferred: up to 50 m x 50 m in areas of moderate geological and grade continuity <p>Classification discussed with geologists familiar with the project to ensure classification represents geological confidence as well as statistical confidence.</p> <p>All relevant factors effecting classification have been considered.</p> <p>The Mineral Resource estimate appropriately reflects the view of the Competent Person.</p>

Criteria	• JORC Code explanation	Commentary
	<i>Competent Person's view of the deposit.</i>	
<i>Audits or reviews</i>	<i>The results of any audits or reviews of Mineral Resource estimates.</i>	No external audits and reviews have been completed on this MRE.
<i>Discussion of relative accuracy/confidence</i>	<p><i>Where appropriate a statement of the relative accuracy and confidence level in the Mineral Resource estimate using an approach or procedure deemed appropriate by the Competent Person. For example, the application of statistical or geostatistical procedures to quantify the relative accuracy of the resource within stated confidence limits, or, if such an approach is not deemed appropriate, a qualitative discussion of the factors that could affect the relative accuracy and confidence of the estimate.</i></p> <p><i>The statement should specify whether it relates to global or local estimates, and, if local, state the relevant tonnages, which should be relevant to technical and economic evaluation. Documentation should include assumptions made and the procedures used.</i></p> <p><i>These statements of relative accuracy and confidence of the estimate should be compared with production data, where available.</i></p>	<p>The relative accuracy of the Mineral Resource Estimate is reflected in the reporting of the MRE in accordance with the guidelines of the 2012 JORC Code.</p> <p>The MRE constitutes a global resource estimate.</p> <p>Production data are not available.</p>